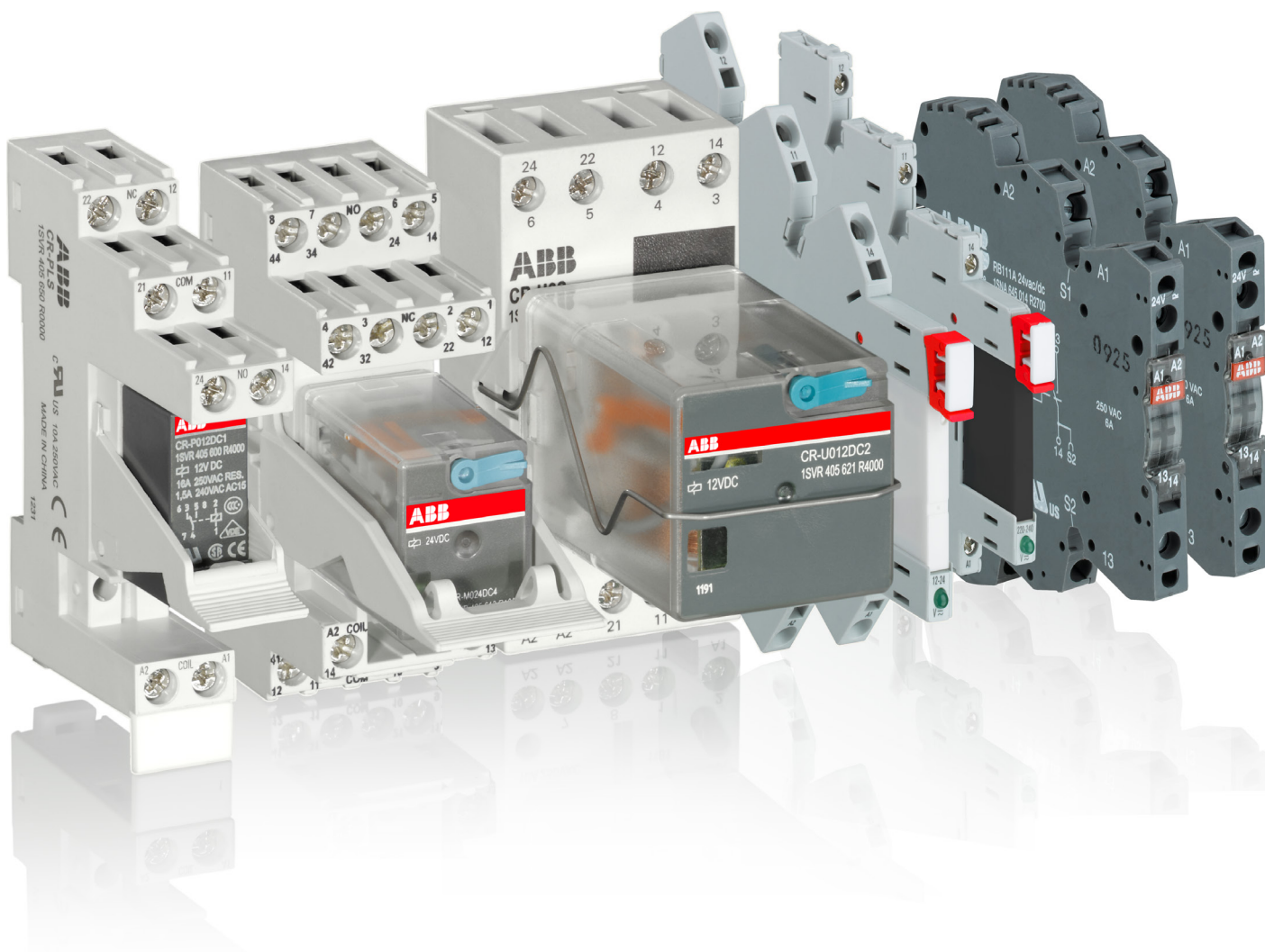


# Interface relays and optocouplers

## Product group picture

5



# Interface relays and optocouplers

## Table of contents

### Interface Relays and Optocouplers

Interface relays and optocouplers	272
Table of contents	272
Pluggable interface relays	274
Table of contents	274
Benefits and advantages	275
Approvals and marks	277
Ordering details - CR-S range	278
Ordering details - CR-P range	279
Ordering details - CR-M range	280
Ordering details CR-P/M functional modules	283
Ordering details - CR-U range	284
Ordering details - CR-U accessories	285
Technical data - CR-P, CR-M, CR-U	286
Technical data, load limit curves - CR-P, CR-M, CR-U	288
Technical data - Sockets for CR-P and CR-M	289
Technical data - Sockets for CR-U	290
Technical data - CR-S range	291
Technical data - CR-S range sockets	292
Load limit curves	293
Connection diagrams, Dimensional drawings	294
Dimensional drawings	295
Boxed interface relays and optocouplers R600 range	298
Table of contents	298
Overview	299
Benefits and advantages	300
Boxed interface relays R600 range	301
Selection	301
Ordering details	303
Connection diagrams	305
Technical data	306
Dimensional drawings, Load limit curves	309
Boxed interface optocouplers R600 range	311
Selection	311
Ordering details	312
Connection diagrams, Dimensional drawings, Load limit curves	313
Technical data	314
Technical data, Dimensions	316

# Interface relays and optocouplers

## Benefits and advantages

### Slim relays and optocouplers CR-S Range



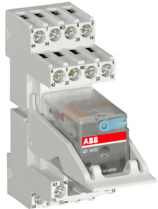
- Standard slim relays (5 mm), optocouplers (5 mm), sockets (6.2 mm) and accessories
- Combination of 9 different rated control supply voltages possible:
  - DC versions: 5 V, 12 V, 24 V
  - AC/DC versions: 12 V, 24 V, 48 V, 60 V, 110 V, 230 V
- Output relay: 1 c/o (SPDT) contact (6 A), standard and gold-plated
- Output optocoupler: Transistor 100 mA - 48 V DC, MOS-FET 2 A - 24 V DC, Triac 2 A - 240 V AC
- Cadmium-free contact material
- All sockets with LED
- Screw and spring connection terminals
- Jumper bar (red, black, blue), marker and separator available as accessories

### Pluggable pcb relays CR-P



- 9 different coil voltages
  - DC versions: 12 V, 24 V, 48 V, 110 V
  - AC versions: 24 V, 48 V, 110 V, 120 V, 230 V
- Output contacts:
  - 1 c/o contact (16 A) or
  - 2 c/o contacts (8 A)
  - optionally equipped with gold contacts
- Logical or standard sockets
- Cadmium-free contact material
- Width of socket: 15.5 mm
- Pluggable function modules
  - Reverse polarity protection/Free wheeling diode
  - LED indication
  - RC elements
  - Overvoltage protection

### Pluggable miniature relays CR-M



- 2 different coil voltages
  - DC versions: 12 V, 24 V, 48 V, 60 V, 110 V, 125 V, 220 V
  - AC versions: 24 V, 48 V, 110 V, 120 V, 230 V
- Output contacts
  - 2 c/o contacts (12 A) or
  - 3 c/o contacts (10 A) or
  - 4 c/o contacts (6 A)
  - optionally equipped with gold contacts, LED and free wheeling diode
- Integrated test button for manual actuation and locking of the output contacts (blue = DC, orange = AC) that can be removed if necessary
- With or without integrated LED
- Logical or standard sockets
- Cadmium-free contact material
- Width on socket: 27 mm
- Pluggable function modules
  - Reverse polarity protection/Free wheeling diode
  - LED indication
  - RC elements
  - Overvoltage protection

### Pluggable universal relays CR-U



- 12 different coil voltages
  - DC versions: 12 V, 24 V, 48 V, 110 V, 125 V, 220 V
  - AC versions: 24 V, 48 V, 60 V, 110 V, 120 V, 230 V
- Output contacts
  - 2 c/o contacts (10 A) or
  - 3 c/o contacts (10 A)
- Integrated test button for manual actuation and locking of the output contacts (blue = DC, orange = AC) that can be removed if necessary
- With or without integrated LED
- Cadmium-free contact material
- Width on socket: 38 mm
- Pluggable function modules
  - Reverse polarity protection/Free wheeling diode
  - LED indication
  - RC elements
  - Overvoltage protection
  - Multifunction time module

# Interface relays and optocouplers

## Benefits and advantages, approvals

### R600 series interface relays and optocouplers



- Boxed slim relays and optocouplers modules 6 mm or 12 mm
- 8 different rated control supply voltages:  
DC versions: 5 V, 12 V, 24 V  
AC/DC versions: 24 V, 48-60 V, 115 V, 230 V, 60-230 V
- Output relay: 1 n/c contact, 1 n/o contact, 1 c/o (SPDT) contact, 2 c/o (SPDT) contacts  
Output optocoupler: Transistor 100 mA - 58 V DC. MOS-FET 2 A / 5 A - 58 V DC, Triac 1 A / 2 A - 230 V AC
- Devices with output contacts protected by built in RC circuit, which result in increased contact life
- Devices with leakage current protection on the input side
- All products with LED for the indication of the operational state
- Screw or spring-type terminals
- Jumper bars and separator end section as accessories

### Approvals and marks

- existing
- pending

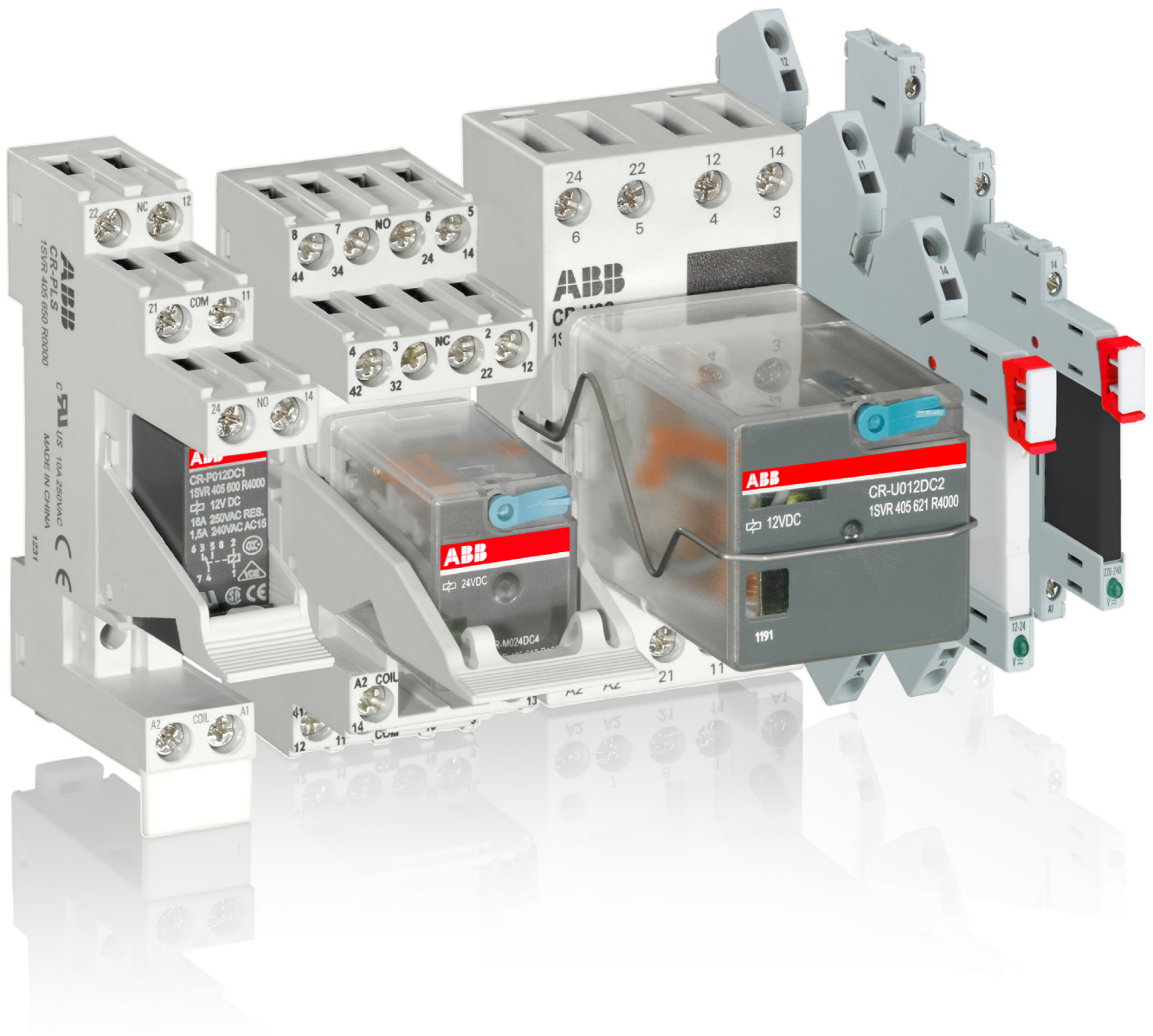
Approvals		Relays						Sockets						Modules		
		CR-S		CR-P	CR-M	CR-U	R600	CR-S sockets	CR-PLS CR-PSS	CR-PLC	CR-M..L. CR-M..SS	CR-M..SF	CR-U..E CR-U..E	CR-U..SM	CR-P/M	CR-U
		Relays	Optocouplers													
	ANSI/UL 508	■	■	■	■	■	■	■	■	■	■	■	■	■	■	■ <sup>6)</sup>
	CAN/CSA C22.2 No.14	■	■	■	■	■	■	■ <sup>1)</sup>	■	■ <sup>2)</sup>	■	■ <sup>3)</sup>	■	■	■	■ <sup>6)</sup>
	CAN/CSA C22.2 No.14	■		■	■	■	■									
	VDE	■ <sup>8)</sup>		■	■ <sup>4)</sup>	■	■ <sup>8)</sup>									
	EAC	■		■	■	■	■	■	■	■	■	■	■	■	■	■
	Lloyds Register				■ <sup>5)</sup>	■										□
	CCC			■	■	■										
	CQC	■														
	RMRS			■	■ <sup>7)</sup>	■ <sup>7)</sup>	■	■	■	■	■	■	■	■	■	
<b>Marks</b>																
	CE	■	■	■	■	■	■	■	■	■	■	■	■	■	■	■

<sup>1)</sup> except CR-PLSx  
<sup>2)</sup> except CR-M...LC  
<sup>3)</sup> except CR-U3E  
<sup>4)</sup> except 125 V DC devices  
<sup>5)</sup> only devices with 4 c/o contacts  
<sup>6)</sup> except CR-U61D, CR-U61DV  
<sup>7)</sup> except 60 V and 125 V devices  
<sup>8)</sup> only relays and sockets with screw terminals

# Pluggable interface relays

## Product group picture

5



# Pluggable interface relays

## Table of contents

### Pluggable interface relays

Pluggable interface relays	274
Table of contents	274
Benefits and advantages	275
Approvals and marks	277
Ordering details - CR-S range	278
Ordering details - CR-P range	279
Ordering details - CR-M range	280
Ordering details CR-P/M functional modules	283
Ordering details - CR-U range	284
Ordering details - CR-U accessories	285
Technical data - CR-P, CR-M, CR-U	286
Technical data, load limit curves - CR-P, CR-M, CR-U	288
Technical data - Sockets for CR-P and CR-M	289
Technical data - Sockets for CR-U	290
Technical data - CR-S range	291
Technical data - CR-S range sockets	292
Load limit curves	293
Connection diagrams, Dimensional drawings	294
Dimensional drawings	295



# Pluggable interface relays

## Socket types

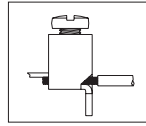
### Kind of connecting terminals

#### Kinds of sockets

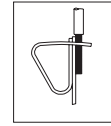
Standard sockets - Position of connecting terminals:  
Coil connection (A1-A2) on lower socket side, contact connections (n/o and n/c contacts) on the lower and upper socket side.

Logical sockets - Position of connecting terminals:  
Coil connection (A1-A2) on lower socket side, all contact connections (common contacts, n/o and n/c contacts) on upper socket side.

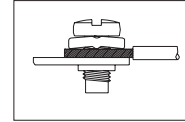
Details see connection diagrams



Screw type



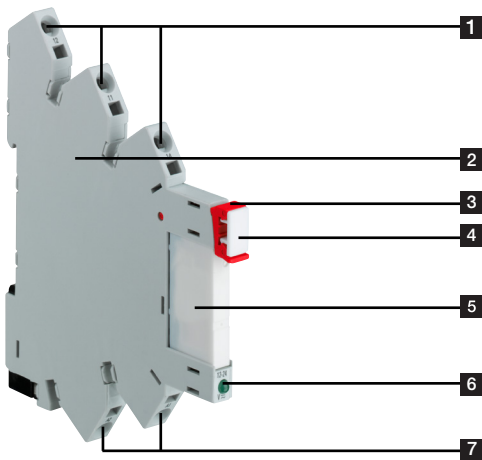
Spring type



Fork type

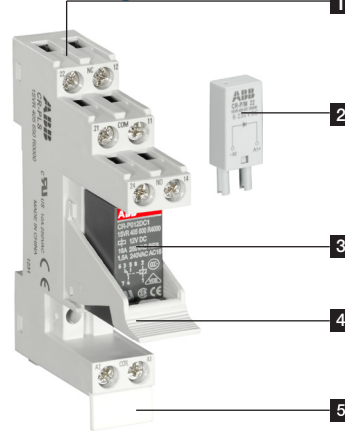
### CR-S Range

5



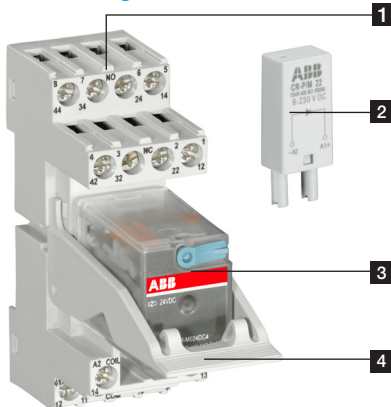
- 1 Output contacts
- 2 Socket
- 3 Relay holder
- 4 Marker
- 5 Interface relay
- 6 LED green: Control supply voltage applied
- 7 Control supply voltage

### CR-P range



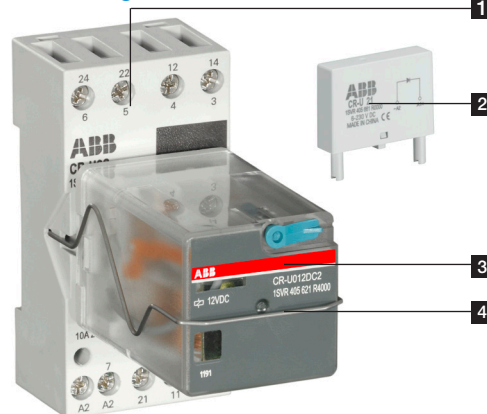
- 1 Socket
- 2 Pluggable function module
- 3 Interface relay
- 4 Holder
- 5 Marker label

### CR-M range



- 1 Socket
- 2 Pluggable function module
- 3 Interface relay
- 4 Holder

### CR-P range



- 1 Socket
- 2 Pluggable function module
- 3 Interface relay
- 4 Holder

# Pluggable interface relays

## Ordering details - CR-S range



2 CDC 291 005 S0014

CR-S Interface relay



2 CDC 291 003 S0016

CR-S optocoupler

S = screw connection type  
Z = spring connection type

### Ordering details - CR-S range pluggable interface relays

Rated control supply voltage	Outputs	Contact ratings	Type	Order code	Price	Pkg qty	Weight (1 pce) kg (lb)
5 V DC	1 c/o (SPDT) standard contacts	250 V, 6 A	CR-S005VDC1R	1SVR405501R1010		10	0.005 (0.011)
12 V DC			CR-S012VDC1R	1SVR405501R2010			
24 V DC			CR-S024VDC1R	1SVR405501R3010			
48 V DC			CR-S048VDC1R	1SVR405501R4010			
60 V DC			CR-S060VDC1R	1SVR405501R5010			
5 V DC	1 c/o (SPDT) gold plated contacts	12 V, 250 mA (3W) <sup>1)</sup>	CR-S005VDC1RG	1SVR405501R1020		10	0.005 (0.011)
12 V DC			CR-S012VDC1RG	1SVR405501R2020			
24 V DC			CR-S024VDC1RG	1SVR405501R3020			
48 V DC			CR-S048VDC1RG	1SVR405501R4020			
60 V DC			CR-S060VDC1RG	1SVR405501R5020			

### Ordering details - CR-S range pluggable optocoupler

Rated control supply voltage	Outputs	Type	Order code	Price	Pkg qty	Weight (1 pce) kg (lb)
24 V DC	Transistor, 100 mA - 48 V DC	CR-S024VDC1TRA	1SVR405510R3050		10	0.004 (0.009)
	MOS-FET, 2 A - 24 V DC	CR-S024VDC1MOS	1SVR405510R3060			
	Triac, 2 A - 240 V AC	CR-S024VDC1TRI	1SVR405510R3070			

### Ordering details - CR-S range complete interface relays (relay + socket)

Rated control supply voltage	Outputs	Contact ratings	Type	Order code	Price	Pkg qty	Weight (1 pce) kg (lb)
24 V AC/DC	1 c/o (SPDT) standard contacts	250 V, 6 A	CR-S024VADC1CRS	1SVR405541R3110		10	0.03 (0.066)
			CR-S024VADC1CRZ	1SVR405541R3210			
110 V AC/DC			CR-S110VADC1CRS	1SVR405541R6110			
			CR-S110VADC1CRZ	1SVR405541R6210			
230 V AC/DC			CR-S230VADC1CRS	1SVR405541R7110			
			CR-S230VADC1CRZ	1SVR405541R7210			
24 V AC/DC	1 c/o (SPDT) gold plated contacts	12 V, 250 mA (3W) <sup>1)</sup>	CR-S024VADC1CRGS	1SVR405541R3120		10	0.03 (0.066)
			CR-S024VADC1CRGZ	1SVR405541R3220			
110 V AC/DC			CR-S110VADC1CRGS	1SVR405541R6120			
			CR-S110VADC1CRGZ	1SVR405541R6220			
230 V AC/DC			CR-S230VADC1CRGS	1SVR405541R7120			
			CR-S230VADC1CRGZ	1SVR405541R7220			

<sup>1)</sup> If specified maximum values exceeded, the gold plating is destroyed. The maximum values of the standard contacts are then valid.

### Ordering details - CR-S range sockets

Rated control supply voltage	Connection type	Type	Order code	Price	Pkg qty	Weight (1 pce) kg (lb)
6-24 V DC	Screw	CR-S006/024VDC1SS	1SVR405521R1100		10	0.025 (0.055)
	Spring	CR-S006/024VDC1SZ	1SVR405521R1200			
12-24 V AC/DC	Screw	CR-S012/024VADC1SS	1SVR405521R3100		10	0.025 (0.055)
	Spring	CR-S012/024VADC1SZ	1SVR405521R3200			
48-60 V AC/DC	Screw	CR-S048/060VADC1SS	1SVR405521R5100		10	0.025 (0.055)
	Spring	CR-S048/060VADC1SZ	1SVR405521R5200			
110-125 V AC/DC	Screw	CR-S110/125VADC1SS	1SVR405521R6100		10	0.025 (0.055)
	Spring	CR-S110/125VADC1SZ	1SVR405521R6200			
220-240 V AC/DC	Screw	CR-S220/240VADC1SS	1SVR405521R7100		10	0.025 (0.055)
	Spring	CR-S220/240VADC1SZ	1SVR405521R7200			

### Ordering details - CR-S range accessories

Version	Type	Order code	Price	Pkg qty	Weight (1 pce) kg (lb)
Jumper bar 20 pole, blue color	CR-SJB20-BLUE	1SVR405598R0700		10	0.008 (0.018)
Jumper bar 20 pole, red color	CR-SJB20-RED	1SVR405598R0800			
Jumper bar 20 pole, black color	CR-SJB20-BLACK	1SVR405598R0900			
Marker block	CR-SM	1SNB041391R0610		10	0.0036 (0.0079)
Separator	CR-SSEP	1SVR405599R0000		10	0.012 (0.026)



Further documentation  
CR-S Range on [www.abb.com](http://www.abb.com)



# Pluggable interface relays

## Ordering details - CR-P range



CR-P

2CDC 291 046 F0004



CR-PLS

2CDC 291 006 F0011



CR-PJ

2CDC 291 004 F0007

### Ordering details - CR-P range

Rated control supply voltage	Outputs	Contact ratings	Type	Order code	Price	Pkg	Weight (1 pce)
						qty	kg (lb)
12 V DC	1 c/o (SPDT)	250 V, 16 A	CR-P012DC1	1SVR405600R4000		10	0.014 (0.031)
24 V DC			CR-P024DC1	1SVR405600R1000			
48 V DC			CR-P048DC1	1SVR405600R6000			
110 V DC			CR-P110DC1	1SVR405600R8000			
24 V AC			CR-P024AC1	1SVR405600R0000			
48 V AC			CR-P048AC1	1SVR405600R5000			
110 V AC			CR-P110AC1	1SVR405600R7000			
120 V AC			CR-P120AC1	1SVR405600R2000			
230 V AC			CR-P230AC1	1SVR405600R3000			
12 V DC	2 c/o (SPDT)	250 V, 8 A	CR-P012DC2	1SVR405601R4000		10	0.014 (0.031)
24 V DC			CR-P024DC2	1SVR405601R1000			
48 V DC			CR-P048DC2	1SVR405601R6000			
110 V DC			CR-P110DC2	1SVR405601R8000			
24 V AC			CR-P024AC2	1SVR405601R0000			
48 V AC			CR-P048AC2	1SVR405601R5000			
110 V AC			CR-P110AC2	1SVR405601R7000			
120 V AC			CR-P120AC2	1SVR405601R2000			
230 V AC			CR-P230AC2	1SVR405601R3000			

### Ordering details - CR-P range with gold contacts

Rated control supply voltage	Outputs	Contact ratings	Type	Order code	Price	Pkg	Weight (1 pce)
						qty	kg (lb)
24 V DC	2 c/o (SPDT) gold contact	250 V, 8 A	CR-P024DC2	1SVR405606R1000		10	0.014 (0.031)
24 V AC			CR-P024AC2G	1SVR405606R0000			
110 V AC			CR-P110AC2G	1SVR405606R7000			
230 V AC			CR-P230AC2G	1SVR405606R3000			

### Ordering details - Accessories

Version	Connection terminal	Type	Order code	Price	Pkg	Weight (1 pce)
					qty	kg (lb)
Logical socket with protective separation	screw	CR-PLS	1SVR405650R0000		10	0.045 (0.099)
		CR-PLSx	1SVR405650R0100			0.043 (0.095)
Logical socket	spring	CR-PLC	1SVR405650R0200		10	0.042 (0.093)
	screw	CR-PSS	1SVR405650R1000			0.038 (0.084)
Standard socket	screw	CR-PSS	1SVR405650R1000		10	0.002 (0.004)
Plastic holder for socket		CR-PH	1SVR405659R0000			0.018 (0.040)
Jumper bar for sockets with screw connection		CR-PJ	1SVR405658R5000		10	0.0002 (0.0004)
Marker		CR-PM	1SVR405658R0000			



Further documentation  
CR-P range on [www.abb.com](http://www.abb.com)

# Pluggable interface relays

## Ordering details - CR-M range



CR-M

2CDC 291 00Z RV015

### Ordering details - CR-M range without LED

Rated control supply voltage	Outputs	Contact ratings	Type	Order code	Price	Pkg qty	Weight (1 pce)				
							kg (lb)				
12 V DC	2 c/o (SPDT)	250 V, 12 A	CR-M012DC2	1SVR405611R4000		10	0.033 (0.073)				
24 V DC			CR-M024DC2	1SVR405611R1000							
48 V DC			CR-M048DC2	1SVR405611R6000							
60 V DC			CR-M060DC2	1SVR405611R4200							
110 V DC			CR-M110DC2	1SVR405611R8000							
125 V DC			CR-M125DC2	1SVR405611R8200							
220 V DC			CR-M220DC2	1SVR405611R9000							
24 V AC			CR-M024AC2	1SVR405611R0000							
48 V AC			CR-M048AC2	1SVR405611R5000							
110 V AC			CR-M110AC2	1SVR405611R7000							
120 V AC			CR-M120AC2	1SVR405611R2000							
230 V AC			CR-M230AC2	1SVR405611R3000							
12 V DC			3 c/o (SPDT)	250 V, 10 A	CR-M012DC3			1SVR405612R4000		10	0.033 (0.073)
24 V DC					CR-M024DC3			1SVR405612R1000			
48 V DC	CR-M048DC3	1SVR405612R6000									
60 V DC	CR-M060DC3	1SVR405612R4200									
110 V DC	CR-M110DC3	1SVR405612R8000									
125 V DC	CR-M125DC3	1SVR405612R8200									
220 V DC	CR-M220DC3	1SVR405612R9000									
24 V AC	CR-M024AC3	1SVR405612R0000									
48 V AC	CR-M048AC3	1SVR405612R5000									
60 V AC	CR-M060AC3	1SVR405612R5200									
110 V AC	CR-M110AC3	1SVR405612R7000									
120 V AC	CR-M120AC3	1SVR405612R2000									
230 V AC	CR-M230AC3	1SVR405612R3000									
12 V DC	4 c/o (SPDT)	250 V, 6 A			CR-M012DC4	1SVR405613R4000		10	0.033 (0.073)		
24 V DC			CR-M024DC4	1SVR405613R1000							
48 V DC			CR-M048DC4	1SVR405613R6000							
60 V DC			CR-M060DC4	1SVR405613R4200							
110 V DC			CR-M110DC4	1SVR405613R8000							
125 V DC			CR-M125DC4	1SVR405613R8200							
220 V DC			CR-M220DC4	1SVR405613R9000							
24 V AC			CR-M024AC4	1SVR405613R0000							
48 V AC			CR-M048AC4	1SVR405613R5000							
110 V AC			CR-M110AC4	1SVR405613R7000							
120 V AC			CR-M120AC4	1SVR405613R2000							
230 V AC			CR-M230AC4	1SVR405613R3000							



# Pluggable interface relays

## Ordering details - CR-M range



CR-M

20DC 291 1002 F0015

5

### Ordering details - CR-M range with LED

Rated control supply voltage	Outputs	Contact ratings	Type	Order code	Price	Pkg qty	Weight (1 pce)
							kg (lb)
12 V DC	2 c/o (SPDT)	250 V, 12 A	CR-M012DC2L	1SVR405611R4100		10	0.033 (0.073)
24 V DC			CR-M024DC2L	1SVR405611R1100			
48 V DC			CR-M048DC2L	1SVR405611R6100			
60 V DC			CR-M060DC2L	1SVR405611R4300			
110 V DC			CR-M110DC2L	1SVR405611R8100			
125 V DC			CR-M125DC2L	1SVR405611R8300			
220 V DC			CR-M220DC2L	1SVR405611R9100			
24 V AC			CR-M024AC2L	1SVR405611R0100			
48 V AC			CR-M048AC2L	1SVR405611R5100			
110 V AC			CR-M110AC2L	1SVR405611R7100			
120 V AC	CR-M120AC2L	1SVR405611R2100					
230 V AC	CR-M230AC2L	1SVR405611R3100					
12 V DC	3 c/o (SPDT)	250 V, 10 A	CR-M012DC3L	1SVR405612R4100		10	0.033 (0.073)
24 V DC			CR-M024DC3L	1SVR405612R1100			
48 V DC			CR-M048DC3L	1SVR405612R6100			
60 V DC			CR-M060DC3L	1SVR405612R4300			
110 V DC			CR-M110DC3L	1SVR405612R8100			
125 V DC			CR-M125DC3L	1SVR405612R8300			
220 V DC			CR-M220DC3L	1SVR405612R9100			
24 V AC			CR-M024AC3L	1SVR405612R0100			
48 V AC			CR-M048AC3L	1SVR405612R5100			
110 V AC			CR-M110AC3L	1SVR405612R7100			
120 V AC	CR-M120AC3L	1SVR405612R2100					
230 V AC	CR-M230AC3L	1SVR405612R3100					
12 V DC	4 c/o (SPDT)	250 V, 6 A	CR-M012DC4L	1SVR405613R4100		10	0.033 (0.073)
24 V DC			CR-M024DC4L	1SVR405613R1100			
48 V DC			CR-M048DC4L	1SVR405613R6100			
60 V DC			CR-M060DC4L	1SVR405613R4300			
110 V DC			CR-M110DC4L	1SVR405613R8100			
125 V DC			CR-M125DC4L	1SVR405613R8300			
220 V DC			CR-M220DC4L	1SVR405613R9100			
24 V AC			CR-M024AC4L	1SVR405613R0100			
48 V AC			CR-M048AC4L	1SVR405613R5100			
110 V AC			CR-M110AC4L	1SVR405613R7100			
120 V AC	CR-M120AC4L	1SVR405613R2100					
230 V AC	CR-M230AC4L	1SVR405613R3100					

### Ordering details - CR-M range with LED and free-wheeling diode

Rated control supply voltage	Outputs	Contact ratings	Type	Order code	Price	Pkg qty	Weight (1 pce) kg (lb)
24 V DC	4 c/o (SPDT)	250 V, 6 A	CR-M024DC4LD	1SVR405614R1100		10	0.033 (0.073)

### Ordering details - CR-M range with gold contacts

Rated control supply voltage	Outputs	Contact ratings	Type	Order code	Price	Pkg qty	Weight (1 pce) kg (lb)
24 V DC	4 c/o (SPDT)	250 V, 6 A	CR-M024DC4G	1SVR405618R1000		10	0.033 (0.073)
24 V AC			CR-M024AC4G	1SVR405618R0000			
110 V AC			CR-M110AC4G	1SVR405618R7000			
230 V AC			CR-M230AC4G	1SVR405618R3000			



Further documentation  
CR-M range on [www.abb.com](http://www.abb.com)

# Pluggable interface relays

## Ordering details - CR-M range



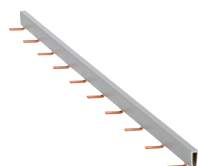
2CDC 291 002 F0015

CR-M



2CDC 291 009 F0011

CR-M4SS



2CDC 291 005 F0007

CR-MJ

### Ordering details – CR-M range with gold contacts and LED

Rated control supply voltage	Outputs	Contact ratings	Type	Order code	Price	Pkg	Weight (1 pce)
						qty	kg (lb)
12 V DC	4 c/o (SPDT)	250 V / 6 A	CR-M012DC4LG	1SVR405618R4100		10	0.033 (0.073)
24 V DC			CR-M024DC4LG	1SVR405618R1100			
48 V DC			CR-M048DC4LG	1SVR405618R6100			
60 V DC			CR-M060DC4LG	1SVR405618R4300			
110 V DC			CR-M110DC4LG	1SVR405618R8100			
125 V DC			CR-M125DC4LG	1SVR405618R8300			
220 V DC			CR-M220DC4LG	1SVR405618R9100			
24 V AC			CR-M024AC4LG	1SVR405618R0100			
48 V AC			CR-M048AC4LG	1SVR405618R5100			
110 V AC			CR-M110AC4LG	1SVR405618R7100			
120 V AC	CR-M120AC4LG	1SVR405618R2100					
230 V AC	CR-M230AC4LG	1SVR405618R3100					

5

### Ordering details – CR-M range with gold contacts, LED and free-wheeling diode

Rated control supply voltage	Outputs	Contact ratings	Type	Order code	Price	Pkg	Weight (1 pce)
						qty	kg (lb)
12 V DC	4 c/o (SPDT)		CR-M012DC4LDG	1SVR405618R4400		10	0.033 (0.073)
24 V DC			CR-M024DC4LDG	1SVR405618R1400			

### Ordering details - Accessories

Version	Connection terminal	Type	Order code	Price	Pkg	Weight (1 pce)
					qty	kg (lb)
Logical socket for 2 c/o	screw	CR-M2LS	1SVR405651R1100		10	0.055 (0.121)
Logical socket for 3 c/o		CR-M3LS	1SVR405651R2100			0.062 (0.137)
Logical socket for 2/4 c/o		CR-M4LS	1SVR405651R3100			0.066 (0.146)
Logical socket for 2 c/o	spring	CR-M2LC	1SVR405651R1200		10	0.065 (0.143)
Logical socket for 2/4 c/o		CR-M4LC	1SVR405651R3200			0.066 (0.146)
Standard socket for 2 c/o	screw	CR-M2SS	1SVR405651R1000		10	0.066 (0.146)
Standard socket for 3 c/o		CR-M3SS	1SVR405651R2000			0.068 (0.150)
Standard socket for 2/4 c/o		CR-M4SS	1SVR405651R3000			0.070 (0.154)
Standard socket for 2 c/o	fork type	CR-M2SF	1SVR405651R1300		10	0.040 (0.088)
Standard socket for 2/4 c/o		CR-M4SF	1SVR405651R3300			0.048 (0.106)
Plastic holder		CR-MH	1SVR405659R1000		10	0.003 (0.007)
Metal holder		CR-MH1	1SVR405659R1100		10	0.0005 (0.001)
Jumper bar for sockets with screw connection		CR-MJ	1SVR405658R6000		10	0.029 (0.064)
Marker		CR-MM	1SVR405658R1000		10	0.0005 (0.001)



Further documentation  
CR-M range on [www.abb.com](http://www.abb.com)

# Pluggable interface relays

## Ordering details CR-P/M functional modules



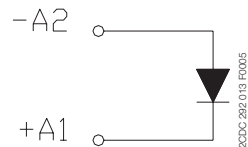
CR-P/M ...

2CDC 291 005 S0011

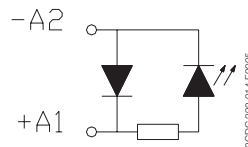
### Ordering details - CR-P/M range

Rated control supply voltage	Description	Version	Type	Order code	Price	Pkg qty	Weight (1 pce)
							kg (lb)
6-220 V DC	Diode - Reverse polarity protection/free wheeling diode	A1+, A2-	CR-P/M 22	1SVR405651R0000		10	0.003 (0.007)
6-24 V DC	Diode and LED - Reverse polarity protection/free wheeling diode	red, A1+, A2-	CR-P/M 42	1SVR405652R0000		10	0.003 (0.007)
24-60 V DC		green, A1+, A2-	CR-P/M 42V	1SVR405652R1000			
110 V DC		red, A1+, A2-	CR-P/M 42B	1SVR405652R4000			
		green, A1+, A2-	CR-P/M 42BV	1SVR405652R4100			
		red, A1+, A2-	CR-P/M 42C	1SVR405652R9000			
		green, A1+, A2-	CR-P/M 42CV	1SVR405652R9100			
6-24 V AC/DC	Spark quenching		CR-P/M 52B	1SVR405653R0000		10	0.003 (0.007)
24-60 V AC/DC			CR-P/M 52D	1SVR405653R4000			
110-230 V AC/DC			CR-P/M 52C	1SVR405653R1000			
6-24 V AC/DC	Diode, LED and reverse polarity protection	red, for DC A1+, A2-	CR-P/M 62	1SVR405654R0000		10	0.003 (0.007)
		green, for DC A1+, A2-	CR-P/M 62V	1SVR405654R1000			
24-60 V AC/DC		red, for DC A1+, A2-	CR-P/M 62E	1SVR405654R4000			
		green, for DC A1+, A2-	CR-P/M 62EV	1SVR405654R4100			
110 V DC		red, for DC A1+, A2-	CR-P/M 92	1SVR405654R0100			
110-230 V AC		green, for DC A1+, A2-	CR-P/M 92V	1SVR405654R1100			
6-24 V AC/DC	Varistor and LED Overvoltage protection	red, for DC A1+, A2-	CR-P/M 62C	1SVR405655R0000		10	0.003 (0.007)
		green, for DC A1+, A2-	CR-P/M 62CV	1SVR405655R1000			
24-60 V AC/DC		red, for DC A1+, A2-	CR-P/M 62D	1SVR405655R4000			
		green, for DC A1+, A2-	CR-P/M 62DV	1SVR405655R4100			
110 V DC	Overvoltage protection	red, for DC A1+, A2-	CR-P/M 92C	1SVR405655R0100		10	0.002 (0.004)
110-230 V AC		green, for DC A1+, A2-	CR-P/M 92CV	1SVR405655R1100			
24 V AC	Overvoltage protection		CR-P/M 72	1SVR405656R0000		10	0.002 (0.004)
115 V AC			CR-P/M 72A	1SVR405656R1000			
230 V AC			CR-P/M 82	1SVR405656R2000			

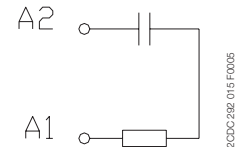
### Connection diagrams



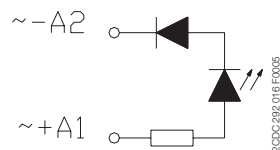
CR-P/M 22



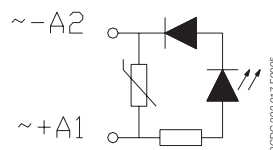
CR-P/M 42, CR-P/M 42C, CR-P/M 42BV, CR-P/M 42B, CR-P/M 42V, CR-P/M 42CV



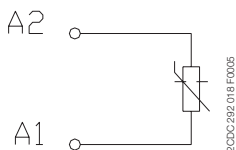
CR-P/M 52B, CR-P/M 52D, CR-P/M 52C



CR-P/M 62, CR-P/M 92, CR-P/M 62EV, CR-P/M 62V, CR-P/M 92V



CR-P/M 62C, CR-P/M 92C, CR-P/M 62D, CR-P/M 62CV, CR-P/M 92CV



CR-P/M 72, CR-P/M 72A, CR-P/M 82



# Pluggable interface relays

## Ordering details - CR-U range



2CDC 291 047 F0004

CR-U



2CDC 291 007 S0011

CR-U2S

### Ordering details - CR-U range without LED

Rated control supply voltage	Outputs	Contact ratings	Type	Order code	Price	Pkg qty	Weight (1 pce) kg (lb)				
12 V DC	2 c/o (SPDT)	250 V, 10 A	CR-U012DC2	1SVR405621R4000		10	0.083 (0.183)				
24 V DC			CR-U024DC2	1SVR405621R1000							
48 V DC			CR-U048DC2	1SVR405621R6000							
110 V DC			CR-U110DC2	1SVR405621R8000							
220 V DC			CR-U220DC2	1SVR405621R9000							
24 V AC			CR-U024AC2	1SVR405621R0000							
48 V AC			CR-U048AC2	1SVR405621R5000							
110 V AC			CR-U110AC2	1SVR405621R7000							
120 V AC			CR-U120AC2	1SVR405621R2000							
230 V AC			CR-U230AC2	1SVR405621R3000							
12 V DC			3 c/o (SPDT)	250 V, 10 A	CR-U012DC3			1SVR405622R4000		10	0.083 (0.183)
24 V DC					CR-U024DC3			1SVR405622R1000			
48 V DC					CR-U048DC3			1SVR405622R6000			
110 V DC					CR-U110DC3			1SVR405622R8000			
125 V DC	CR-U125DC3	1SVR405622R8200									
220 V DC	CR-U220DC3	1SVR405622R9000									
24 V AC	CR-U024AC3	1SVR405622R0000									
48 V AC	CR-U048AC3	1SVR405622R5000									
60 V AC	CR-U060AC3	1SVR405622R5200									
110 V AC	CR-U110AC3	1SVR405622R7000									
120 V AC	CR-U120AC3	1SVR405622R2000									
230 V AC	CR-U230AC3	1SVR405622R3000									

### Ordering details - CR-U range with LED

Rated control supply voltage	Outputs	Contact ratings	Type	Order code	Price	Pkg qty	Weight (1 pce) kg (lb)				
12 V DC	2 c/o (SPDT)	250 V, 10 A	CR-U012DC2L	1SVR405621R4100		10	0.083 (0.183)				
24 V DC			CR-U024DC2L	1SVR405621R1100							
48 V DC			CR-U048DC2L	1SVR405621R6100							
110 V DC			CR-U110DC2L	1SVR405621R8100							
220 V DC			CR-U220DC2L	1SVR405621R9100							
24 V AC			CR-U024AC2L	1SVR405621R0100							
48 V AC			CR-U048AC2L	1SVR405621R5100							
110 V AC			CR-U110AC2L	1SVR405621R7100							
120 V AC			CR-U120AC2L	1SVR405621R2100							
230 V AC			CR-U230AC2L	1SVR405621R3100							
12 V DC			3 c/o (SPDT)	250 V, 10 A	CR-U012DC3L			1SVR405622R4100		10	0.083 (0.183)
24 V DC					CR-U024DC3L			1SVR405622R1100			
48 V DC					CR-U048DC3L			1SVR405622R6100			
110 V DC					CR-U110DC3L			1SVR405622R8100			
220 V DC	CR-U220DC3L	1SVR405622R9100									
24 V AC	CR-U024AC3L	1SVR405622R0100									
48 V AC	CR-U048AC3L	1SVR405622R5100									
110 V AC	CR-U110AC3L	1SVR405622R7100									
120 V AC	CR-U120AC3L	1SVR405622R2100									
230 V AC	CR-U230AC3L	1SVR405622R3100									

### Ordering details - Accessories

Version	Type	Order code	Price	Pkg qty	Weight (1 pce) kg (lb)
Socket for 2 c/o and module	CR-U2S	1SVR405670R0000		10	
Socket for 3 c/o and module	CR-U3S	1SVR405660R0000			
Socket for 3 c/o	CR-U3E	1SVR405660R0100			
Socket small for 2 c/o	CR-U2SM	1SVR405670R1100			
Socket small for 3 c/o	CR-U3SM	1SVR405660R1100			
Holder for CR-U socket	CR-UH	1SVR405669R0000			



Further documentation  
CR-U range on [www.abb.com](http://www.abb.com)



# Pluggable interface relays

## Ordering details - CR-U accessories



CR-U...

2CDC 291 004 S0011



CR-U T

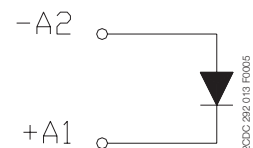
2CDC 291 032 F0005

### Ordering details - CR-U range

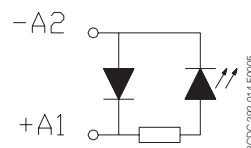
Rated control supply voltage	Description	Version	Type	Order code	Price	Pkg qty	Weight				
							(1 pce)				
							kg (lb)				
6-220 V DC	Diode - Reverse polarity protection/free wheeling diode	A1+, A2-	CR-U 21	1SVR405661R0000		10	0.007 (0.015)				
6-24 V DC	Diode and LED - Reverse polarity protection/free wheeling diode	red, A1+, A2-	CR-U 41	1SVR405662R0000		10	0.007 (0.015)				
24-60 V DC		green, A1+, A2-	CR-U 41V	1SVR405662R1000							
110 V DC		red, for DC A1+, A2-	CR-U 41B	1SVR405662R4000							
6-24 V AC/DC		green, for DC A1+, A2-	CR-U 41BV	1SVR405662R4100							
24-60 V AC/DC	Spark quenching	red, for DC A1+, A2-	CR-U 41C	1SVR405662R9000		10	0.007 (0.015)				
110-230 V AC/DC		green, for DC A1+, A2-	CR-U 41CV	1SVR405662R9100							
6-24 V AC/DC	Diode and LED	red, for DC A1+, A2-	CR-U 51B	1SVR405663R0000		10	0.007 (0.015)				
24-60 V AC/DC		green, for DC A1+, A2-	CR-U 51D	1SVR405663R4000							
110 V DC		red, for DC A1+, A2-	CR-U 61	1SVR405664R0000							
110-230 V AC		green, for DC A1+, A2-	CR-U 61V	1SVR405664R1000							
6-24 V AC/DC		red, for DC A1+, A2-	CR-U 61E	1SVR405664R4000							
24-60 V AC/DC		green, for DC A1+, A2-	CR-U 61EV	1SVR405664R4100							
110 V DC		red, for DC A1+, A2-	CR-U 91	1SVR405664R0100							
110-230 V AC		green, for DC A1+, A2-	CR-U 91V	1SVR405664R1100							
6-24 V AC/DC		Varistor and LED Overvoltage protection	red, for DC A1+, A2-	CR-U 61C				1SVR405665R0000		10	0.007 (0.015)
24-60 V AC/DC			green, for DC A1+, A2-	CR-U 61CV				1SVR405665R1000			
110 V DC	red, for DC A1+, A2-		CR-U 61D	1SVR405665R4000							
110-230 V AC	green, for DC A1+, A2-		CR-U 61DV	1SVR405665R4100							
24 V AC	Overvoltage protection, varistor	red, for DC A1+, A2-	CR-U 91C	1SVR405665R0100		10	0.007 (0.015)				
115 V AC		green, for DC A1+, A2-	CR-U 91CV	1SVR405665R1100							
230 V AC		CR-U 71	1SVR405666R0000								
24-240 V AC/DC	Multifunction time module	pluggable onto CR-U2S and CR-U3S	CR-U 71A	1SVR405666R1000		10	0.007 (0.015)				
			CR-U 81	1SVR405666R2000							
			CR-U T	1SVR405667R0000							

All CR-U modules can be plugged onto sockets CR-U2S and CR-U3S.

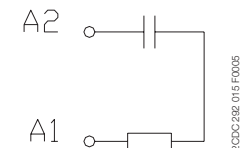
### Connection diagrams



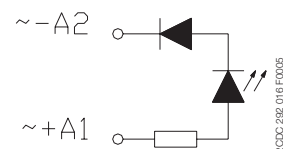
CR-U 21



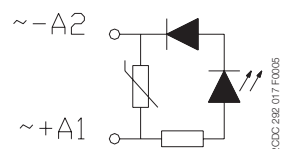
CR-U 41, CR-U 41B, CR-U 41C, CR-U 41V, CR-U 41BV, CR-U 41CV



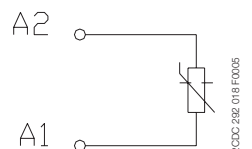
CR-U 51B, CR-U 51C, CR-U 51D



CR-U 61, CR-U 61E, CR-U 91, CR-U 61V, CR-U 61EV, CR-U 91V



CR-U 61C, CR-U 61CV, CR-U 61D, CR-U 61DV, CR-U 91C, CR-U 91CV




CR-U 71, CR-U 71A, CR-U 81

# Pluggable interface relays

## Technical data - CR-P, CR-M, CR-U


### Input circuit - coil data

#### CR-P range




	Rated control supply voltage $U_s$	Rated frequency	Make voltage (at 20 °C)	Maximum voltage (at 55 °C)	Break voltage	Rated power	Coil resistance (at 20 °C)	Tolerance of coil resistance
DC coils	12 V DC	-	8.4 V DC	30.6 V DC	$\geq 0.1 U_s$	0.4-0.48 W	360 $\Omega$	$\pm 10\%$
	24 V DC	-	16.8 V DC	61.2 V DC	$\geq 0.1 U_s$	0.4-0.48 W	1440 $\Omega$	$\pm 10\%$
	48 V DC	-	33.6 V DC	122.4 V DC	$\geq 0.1 U_s$	0.4-0.48 W	5700 $\Omega$	$\pm 10\%$
	110 V DC	-	77 V DC	280 V DC	$\geq 0.1 U_s$	0.4-0.48 W	25200 $\Omega$	$\pm 10\%$
AC coils	24 V AC	50 / 60 Hz	19.2 V AC	28.8 V AC	$\geq 0.15 U_s$	0.75 VA	400 $\Omega$	$\pm 10\%$
	48 V AC	50 / 60 Hz	38.4 V AC	57.6 V AC	$\geq 0.15 U_s$	0.75 VA	1550 $\Omega$	$\pm 10\%$
	110 V AC	50 / 60 Hz	88 V AC	132 V AC	$\geq 0.15 U_s$	0.75 VA	8900 $\Omega$	$\pm 10\%$
	120 V AC	50 / 60 Hz	96 V AC	144 V AC	$\geq 0.15 U_s$	0.75 VA	10200 $\Omega$	$\pm 10\%$
	230 V AC	50 / 60 Hz	184 V AC	276 V AC	$\geq 0.15 U_s$	0.75 VA	38500 $\Omega$	$\pm 10\%$

#### CR-M range



	Rated control supply voltage $U_s$	Rated frequency	Make voltage (at 20 °C)	Maximum voltage (at 55 °C)	Break voltage	Rated power	Coil resistance (at 20 °C)	Tolerance of coil resistance
DC coils	12 V DC	-	9.6 V DC	13.2 V DC	$\geq 0.1 U_s$	0.9 W	160 $\Omega$	$\pm 10\%$
	24 V DC	-	19.2 DC	26.4 V DC	$\geq 0.1 U_s$	0.9 W	640 $\Omega$	$\pm 10\%$
	48 V DC	-	38.4 V DC	52.8 V DC	$\geq 0.1 U_s$	0.9 W	2600 $\Omega$	$\pm 10\%$
	60 V DC	-	48 V DC	66 V DC	$\geq 0.1 U_s$	0.9 W	4000 $\Omega$	$\pm 10\%$
	110 V DC	-	88 V DC	121 V DC	$\geq 0.1 U_s$	0.9 W	13600 $\Omega$	$\pm 10\%$
	125 V DC	-	100 V DC	137.5 V DC	$\geq 0.1 U_s$	0.9 W	16000 $\Omega$	$\pm 10\%$
	220 V DC	-	176 V DC	242 V DC	$\geq 0.1 U_s$	0.9 W	54000 $\Omega$	$\pm 10\%$
	AC coils	24 V AC	50 / 60 Hz	19.2 V AC	26.4 V AC	$\geq 0.2 U_s$	1.6 VA	158 $\Omega$
48 V AC		50 / 60 Hz	38.4 V AC	52.8 V AC	$\geq 0.2 U_s$	1.6 VA	640 $\Omega$	$\pm 10\%$
60 V AC		50 / 60 Hz	48 V AC	66 V AC	$\geq 0.2 U_s$	1.6 VA	930 $\Omega$	$\pm 10\%$
110 V AC		50 / 60 Hz	88 V AC	121 V AC	$\geq 0.2 U_s$	1.6 VA	3450 $\Omega$	$\pm 10\%$
120 V AC		50 / 60 Hz	96 V AC	132 V AC	$\geq 0.2 U_s$	1.6 VA	3770 $\Omega$	$\pm 10\%$
230 V AC		50 / 60 Hz	184 V AC	253 V AC	$\geq 0.2 U_s$	1.6 VA	16100 $\Omega$	$\pm 10\%$

#### CR-U range



	Rated control supply voltage $U_s$	Rated frequency	Make voltage (at 20 °C)	Maximum voltage (at 55 °C)	Break voltage	Rated power	Coil resistance (at 20 °C)	Tolerance of coil resistance
DC coils	12 V DC	-	9.6 V DC	13.2 V DC	$\geq 0.1 U_s$	1.5 W	110 $\Omega$	$\pm 10\%$
	24 V DC	-	19.2 V DC	26.4 V DC	$\geq 0.1 U_s$	1.5 W	430 $\Omega$	$\pm 10\%$
	48 V DC	-	38.4 V DC	52.8 V DC	$\geq 0.1 U_s$	1.5 W	1750 $\Omega$	$\pm 10\%$
	110 V DC	-	88.0 V DC	121.0 V DC	$\geq 0.1 U_s$	1.5 W	9200 $\Omega$	$\pm 10\%$
	125 V DC	-	100 V DC	137.5 V DC	$\geq 0.1 U_s$	1.5 W	11000 $\Omega$	$\pm 10\%$
	220 V DC	-	176.0 V DC	242.0 V DC	$\geq 0.1 U_s$	1.5 W	37000 $\Omega$	$\pm 10\%$
AC coils	24 V AC	50 / 60 Hz	19.2 V AC	26.4 V AC	$\geq 0.15 U_s$	2.8 VA (50 Hz) 2.5 VA (60 Hz)	75 $\Omega$	$\pm 10\%$
	48 V AC	50 / 60 Hz	38.4 V AC	52.8 V AC	$\geq 0.15 U_s$	2.8 VA (50 Hz) 2.5 VA (60 Hz)	305 $\Omega$	$\pm 10\%$
	60 V AC	50 / 60 Hz	48.0 V AC	66.0 V AC	$\geq 0.15 U_s$	2.8 VA (50 Hz) 2.5 VA (60 Hz)	475 $\Omega$	$\pm 10\%$
	110 V AC	50 / 60 Hz	88.0 V AC	121.0 V AC	$\geq 0.15 U_s$	2.8 VA (50 Hz) 2.5 VA (60 Hz)	1700 $\Omega$	$\pm 10\%$
	120 V AC	50 / 60 Hz	96.0 V AC	132.0 V AC	$\geq 0.15 U_s$	2.8 VA (50 Hz) 2.5 VA (60 Hz)	1910 $\Omega$	$\pm 10\%$
	230 V AC	50 / 60 Hz	184.0 V AC	253.0 V AC	$\geq 0.15 U_s$	2.8 VA (50 Hz) 2.5 VA (60 Hz)	7080 $\Omega$	$\pm 10\%$

# Pluggable interface relays

## Technical data - CR-P, CR-M, CR-U

Type		CR-P...1	CR-P...2	CR-M...2	CR-M...3	CR-M...4	CR-U...2	CR-U...3	
Output circuit(s)		11-12/14	11-12/14 21-22/24	11-12/14 21-22/24	11-12/14 21-22/24 31-32/34	11-12/14 21-22/24 31-32/34 41-42/44	11-12/14 31-32/34	11-12/14 21-22/24 31-32/34	
Kind of output		Relay, 1 c/o	Relay, 2 c/o	Relay, 2 c/o	Relay, 3 c/o	Relay, 4 c/o	Relay, 2 c/o	Relay, 3 c/o	
Contact material		AgNi	AgNi AgNi/Au 5 µm	AgNi	AgNi	AgNi AgNi/Au 5 µm	AgNi		
Rated operational voltage U <sub>e</sub> (VDE 0110, IEC 60947-1)		250 V							
Minimum switching voltage		5 V		10 V (AgNi); 5 V (AgNi/Au)			10 V		
Maximum switching voltage	DC	300 V DC		250 V DC					
	AC	440 V AC		250 V AC			440 V AC		
Minimum switching current		5 mA (AgNi), 2 mA (AgNi/Au)		5 mA (AgNi)	5 mA (AgNi)	2 mA (AgNi/Au)	5 mA		
Rated free air thermal current I <sub>th</sub>		16 A	8 A	12 A	10 A	6 A	10 A		
Rated operational current (IEC 60947-5-1)	AC-12 (resistive) 230 V	16 A	8 A	12 A	10 A	6 A	10 A		
	AC-15 (inductive) 230 V	1.5 A	1.5 A	1.5 A	1.5 A	1 A	1.5 A		
	AC-15 (inductive) 120 V	3 A				1.5 A	3 A		
	DC-12 (resistive) 24 V	16 A	8 A	12 A	10 A	6 A	10 A		
	DC-13 (inductive) 24 V	2.5 A	2 A	2.5 A	2.5 A	2 A	2 A		
	DC-13 (inductive) 120 V	0.22 A							
	DC-13 (inductive) 250 V	0.1 A							
AC rating (UL 508)	Utilization category (pilot duty) (Contact rating code designation)	B300		B300			B300		
	max. rated operational voltage	300 V AC		300 V AC			300 V AC		
	Max. continuous thermal current at utilization category	5 A		5 A	5 A	2.5 A	5 A		
	Max. making / breaking apparent power at utilization category	3600 / 360 VA		3600 / 360 VA			1800 / 180 VA	3600/360 VA	
	Utilization category (resistive) (CSA22.2 No.14...)	16 A, 250 V AC	8 A, 250 V AC	10 A, 250 V AC 12 A, 150 V AC	6 A, 250 V AC 10 A, 150 V AC	5 A, 250 V AC 10 A, 150 V AC	10 A, 250 V AC (resistive + single-phase)		
DC rating * (UL 508; NEMA ICS-5)	Utilization category (pilot duty) (Contact rating code designation)	R300							
	Max. rated operational voltage	300 V DC							
	Max. continuous thermal current at utilization category	1 A							
	Max. making / breaking apparent power at utilization category	28 VA							
	Utilization category (resistive) (CSA22.2 No.14...)	-	10 A, 24 V DC	-			10 A, 28 V DC		
Maximum making (inrush) current		30 A	15 A	24 A	20 A	12 A	20 A		
Minimum switching power		0.3 W (AgNi), 0.05 W (AgNi/Au)		0.3 W (AgNi), 0.1 W (AgNi/Au)			0.3 W		
Maximum switching (breaking) power	AC1 (resistive)	4000 VA	2000 VA	3000 VA	2500 VA	1500 VA	2500 VA		
Contact resistance		≤ 100 mΩ							
Maximum operating frequency	rated load AC-1	600 switching cycles/h		1200 switching cycles/h					
	without load	72000 switching cycles/h		18000 switching cycles/h			12000 switching cycles/h		
Mechanical lifetime		> 3 x 10 <sup>7</sup> switching cycles		> 2 x 10 <sup>7</sup> switching cycles					
Electrical lifetime	electrical AC1 (resistive)	> 0.7 x 10 <sup>5</sup> switching cycles (16 A, 250 V)	> 10 <sup>5</sup> switching cycles (8 A, 250 V)	> 10 <sup>5</sup> switching cycles (12 A, 250 V)	> 10 <sup>5</sup> switching cycles (10 A, 250 V)	> 10 <sup>5</sup> switching cycles (6 A, 250 V)	> 10 <sup>5</sup> switching cycles (12 A, 250 V)		
	cos φ	see reduction factor F							
Response time		typ. 7 ms		typ. 13 ms (DC), 10 ms (AC)			typ. 18 ms (DC), 12 ms (AC)		
Release time		typ. 3 ms		typ. 3 ms (DC), 8 ms (AC)			typ. 7 ms (DC), 10 ms (AC)		
<b>Isolation data</b>									
Rated insulation voltage		400 V AC		250 V AC					
Insulation class		C250 / B400		C250 / B250			C250		
Rated impulse withstand voltage U <sub>imp</sub>	between coil and contacts	5 kV AC		2.5 kV AC					
	between open contacts	1 kV AC		1.5 kV AC					
	between c/o (SPDT) contacts	-	2.5 kV AC	2.5 kV AC		≥ 2 kV AC	2 kV AC		
Clearance between coil and contacts		≥ 10 mm		≥ 2.5 mm			≥ 1.6 mm	≥ 3 mm	
Creepage distance between coil and contacts		≥ 10 mm		≥ 4 mm			≥ 3.2 mm	≥ 4.2 mm	
Overvoltage category		III		III			II	III	
Pollution degree		3		3			2	3	

\* Those ratings are based on different type tests but they are not covered by the cULus or CSA approvals.

# Pluggable interface relays

## Technical data, load limit curves - CR-P, CR-M, CR-U

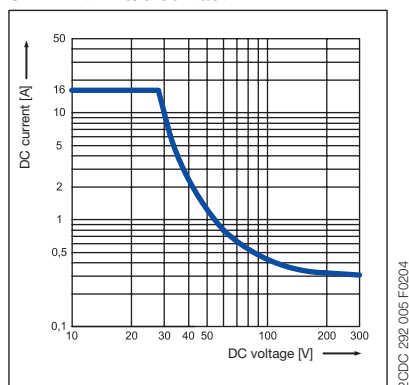
Type	CR-P...1	CR-P...2	CR-M...2	CR-M...3	CR-M...4	CR-U...2	CR-U...3
<b>General data</b>							
Dimensions (W x H x D) when mounted	12.7 x 29 x 15.7 mm		21.2 x 27.5 x 35.6 mm			35 x 35 x 54.4 mm	
Weight	14 g (0.031 lb)		35 g (0.077 lb)			83 g (0.18 lb)	
Mounting	on socket (see accessories)						
Mounting position	any						
Degree of protection	IP 67		IP 40				
<b>Electrical connection</b>							
Connection	by socket						
<b>Environmental data</b>							
Ambient temperature range	operation	DC: -40...+85 °C; AC: -40...+70 °C		DC: -40...+70 °C; AC: -40...+55 °C			
	storage	-40 ... +85 °C					
Vibration resistance 10-150 Hz	n/o contact	10 g		5 g		5 g	
	n/c contact	10 g	5 g	5 g	5 g		
Shock resistance	n/o contact	30 g	20 g	10 g	10 g		
	n/c contact	30 g	20 g	5 g	10 g		
<b>Standards</b>							
Product standard	IEC/EN 60255-23, IEC/EN 60664-1, IEC/EN 61810-1		IEC/EN 60255-23, IEC/EN 60810-1, IEC/EN 61810-7			IEC/EN 60255-1	
Low Voltage Directive	2006/95/EC						

Approvals see page 5/6.

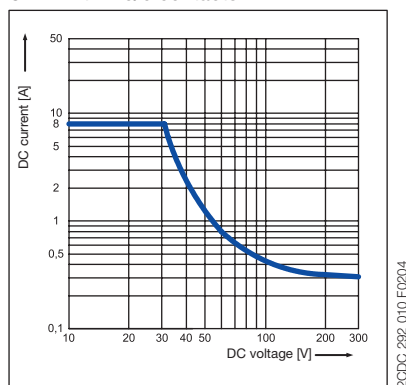
5

### Load limit curves - Maximum switching power at resistive DC load

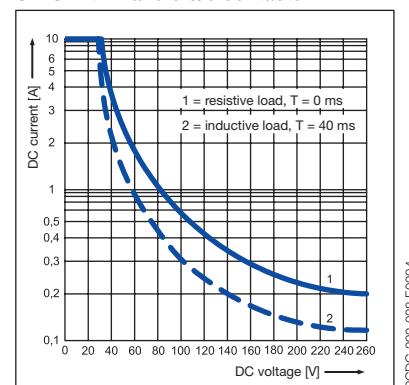
CR-P with 1 c/o contact



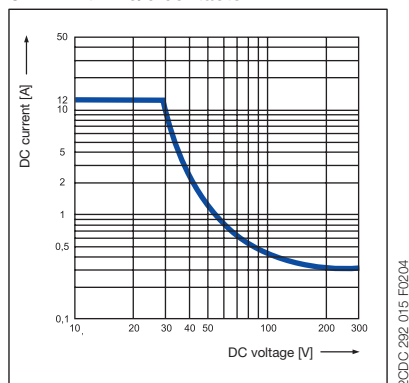
CR-P with 2 c/o contacts



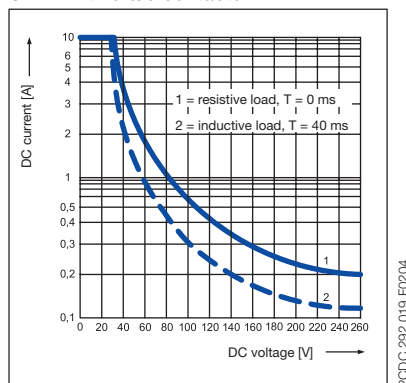
CR-U with 2 and 3 c/o contacts



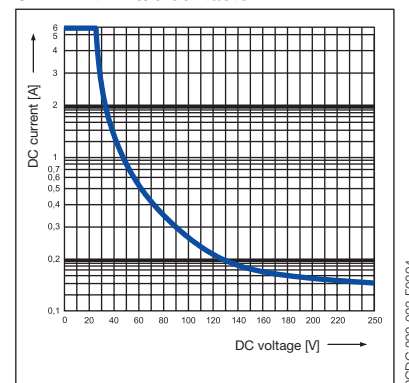
CR-M with 2 c/o contacts



CR-M with 3 c/o contacts



CR-M with 4 c/o contacts



# Pluggable interface relays

## Technical data - Sockets for CR-P and CR-M

Output circuits		CR-PLS	CR-PLS(x)	CR-PSS	CR-PLC	CR-MxLS	CR-MxSS	CR-MxSF	CR-MxLC
Output circuits		11-12/14, 21-22/24				11-12/14, 21-22/24, ...			
Number of poles		2				2, 3 or 4		2 or 4	
Rated voltage		250 V AC	300 V AC	250 V AC	250 V AC			300 V AC	
Rated current		2 x 10 A <sup>1)</sup>	2 x 12 A <sup>1)</sup>	2 x 10 A <sup>1)</sup>	7 A			10 A	
<b>General data</b>									
Dimensions without holder and module (L x W x H)		76 x 15.8 x 62 mm (2.992 x 0.622 x 2.441 in)	78.5 x 15.5 x 61 mm (3.011 x 0.610 x 2.402 in)	76 x 15.8 x 42.8 mm (2.992 x 0.622 x 1.685 in)	97.5 x 16.3 x 45.2 mm (3.839 x 0.642 x 1.780 in)	75 x 27.2 x 60.8 mm (2.952 x 1.071 x 2.394 in)	75.2 x 27.2 x 42.6 mm (2.961 x 1.071 x 1.677 in)	66.7 x 30.3 x 29 mm (2.626 x 1.193 x 1.142 in)	95 x 31 x 42.5 mm (3.74 x 1.22 x 1.67 in)
Degree of protection		IP 20 B (EN 60529)							
Temperature range		operation -40...+70 °C		-40...+85 °C		-40...+70 °C		-40...+70 °C	
Storage		-40...+70 °C		-40...+85 °C		-40...+70 °C		-25...+85 °C	
Connection type		screw connection			spring connection	screw connection		fork type screw	spring connection
Maximum number of wires per connecting terminal		2			2 (one per connection point)	2		-	2 (one per connection point)
Wire size		rigid			2 x 2.5 mm <sup>2</sup> (2 x 14 AWG)		2 x 1.5 mm <sup>2</sup> (2 x 16 AWG)		0.2 - 1.5 mm <sup>2</sup> (24 x 16 AWG)
		fine-strand			2 x 2.5 mm <sup>2</sup> (2 x 14 AWG)		0.2-1.5 mm <sup>2</sup> (24-16 AWG)		-
		with wire end ferrule			2 x 1.5 mm <sup>2</sup> (2 x 16 AWG)		2 x 1.5 mm <sup>2</sup> (2 x 16 AWG)		-
Stripping length		-			7 mm (0.28 in)		-		-
Tightening torque		0.6 Nm		0.8 Nm		0.6 Nm		0.6 Nm (5.31 lb.in)	
Maximum clamping force		with 0.2 mm <sup>2</sup> -		-		10 N		-	
		with 1.5 mm <sup>2</sup> -		-		40 N		-	
		with wire end ferrule -		-		-		40 N	
		-		-		-		> 40 N	
Mounting		DIN rail (IEC/EN 60715)							
Material		socket PA 6+GF - V2			PA 6+GF - V2				
		contacts CuZn33			CuZn33				
		contact surface 5 μ Ni		5 μ tinned		5 μ Ni		6 μ Ni	
		terminals 8 μ Ni		8 μ galvanized		8 μ Ni		XCrNi Steel	
		combi screw M3 8.8 Steel, 5μ Ni		-		8.8 Steel, 5μ Ni		-	
<b>Isolation data</b>									
Insulation voltage		> 5 kV	> 3 kV	> 5 kV	> 3 kV			> 4 kV	
Isolation between coil and contacts		EN 61984			VDE 0106 / 101	EN 61984		DIN EN 61140, VDE 0140-1	
Clearance and creepage distance		EN 61984			DIN EN 60664-1	EN 61984		DIN EN 60664-1	
<b>Standards</b>									
Products standard		EN 61984			EN 61984				
Low Voltage Directive		2006/95/EC			2006/95/EC				
EMC Directive		-			2004/108/EC				

<sup>1)</sup> Loads >10 A (>12 A for CR-PLSx) require jumpering of terminal 11 with 21, 12 with 22, and 14 with 24

# Pluggable interface relays

## Technical data - Sockets for CR-U

Output circuits	CR-U2S	CR-U3S	CR-U3E	CR-UxSM
Output circuits	11-12/14, 21-22/24,...			
Number of poles	2	3		2 or 3
Rated voltage	250 V AC		300 V AC	250 V
Rated current	10 A			
<b>General data</b>				
Dimensions without holder and module (L x W x H)	75.3 x 37.3 x 26 mm (2.965 x 1.469 x 1.024 in)	75.3 x 38.1 x 26 mm (2.965 x 1.500 x 1.024 in)	70 x 38 x 26 mm (2.756 x 1.496 x 1.024 in)	61.8 x 38.1 x 26 mm (2.756 x 1.500 x 1.024 in)
Degree of protection	IP 20 B (EN 60529)			
Temperature range	operation: -40...+70 °C storage: -40...+70 °C		-40...+85 °C -40...+85 °C	-40...+70 °C -40...+70 °C
Wire size	rigid: 2 x 2.5 mm <sup>2</sup> (2 x 14 AWG) fine-strand: 2 x 2.5 mm <sup>2</sup> (2 x 14 AWG) with wire end ferule: 2 x 1.5 mm <sup>2</sup> (2 x 16 AWG)			
Tightening torque	0.6 Nm		0.8 Nm	0.6 Nm
Mounting	DIN rail (IEC/EN 60715)			
Material	socket: PA 6+GF - V2 contacts: CuZn33 contact surface: 6 μ Ni terminals: 8 μ Ni combi screw M3: 8.8 Steel, 5μ Ni		8 μ galvanized	3 μ Ni 10 μ Ni Steel, 8 μ Ni
<b>Isolation data</b>				
Insulation voltage	> 2 kV			
Isolation between coil and contacts	EN 61984			
Clearance and creepage distance	EN 61984			
<b>Standards</b>				
Products standard	EN 61984: 2001			
Low Voltage Directive	2006/95/EC			



# Pluggable interface relays

## Technical data - CR-S range

	Rated control supply voltage $U_s$	Make voltage (at 23 °C)	Maxium voltage (at 55 °C)	Break voltage	Rated power	Coil resistance (at 23 °C)	Tolerance of coil resistance
CR-S005VDC1R(G)	5 V DC	3.75 V DC	7.5 V DC	0.25 V DC	170 mW	147 Ω	± 10 %
CR-S012VDC1R(G)	12 V DC	9 V DC	18 V DC	0.6 V DC	170 mW	848 Ω	± 10 %
CR-S024VDC1R(G)	24 V DC	18 V DC	36 V DC	1.2 V DC	170 mW	3390 Ω	± 15 %
CR-S048VDC1R(G)	48 V DC	36 V DC	72 V DC	2.4 V DC	210 mW	10600 Ω	± 15 %
CR-S060VDC1R(G)	60 V DC	45 V DC	90 V DC	3 V DC	210 mW	16600 Ω	± 15 %

### Output circuits

Output circuits	11-12/14	
Kind of output	1 c/o (SPDT)	
Contact material	AgSnO <sub>2</sub> / AgSnO <sub>2</sub> /Au	
Rated operational voltage $U_o$ (IEC/EN 60947-1)	250 V AC	
Minimum switching voltage	12 V DC	
Maximum switching voltage	400 V AC / 125 V DC	
Minimum switching current	100 mA (AgSnO <sub>2</sub> ) / 10 mA (AgSnO <sub>2</sub> /Au)	
Rated free air thermal current $I_{th}$	5 A	
Rated operational current (IEC/EN 60947-5-1)	AC12 (resistive)	230 V 6 A
	AC15 (inductive)	230 V 1.5 A
	AC15 (inductive)	120 V 3 A
	DC12 (resistive)	24 V 6 A
	DC13 (inductive)	24 V 1 A
	DC13 (inductive)	120 V 0.22 A
	DC13 (inductive)	250 V 0.11 A
AC rating (UL 508; NEMA ICS-5)	Utilization category (pilot duty)	B300
	(Contact rating code designation)	
DC rating (UL 508; NEMA ICS-5)	Utilization category (pilot duty)	R300
	(Contact rating code designation)	
Maximum making (inrush) current	15 A, 240 V AC	
Minimum switching power	100 mA/12 V (AgSnO <sub>2</sub> ) / 50 mW (AgSnO <sub>2</sub> /Au)	
Maximum switching (breaking) power	AC1 (resistive)	1500 VA, 250 V AC
Contact resistance	100 mΩ (at 1 A/ 6 V DC)	
Maximum operating frequency	rated load AC1	360 switching cycles/h
	without load	18000 switching cycles/h
Mechanical lifetime	1 x 10 <sup>7</sup> switching cycles	
Electrical lifetime	AC1 (resistive)	(n/c) 3 x 10 <sup>4</sup> switching cycles (at +85 °C)
		(n/o) 1 x 10 <sup>4</sup> switching cycles (at +85 °C)
Response time	8 ms	
Release time	4 ms	
<b>Isolation data</b>		
Rated insulation voltage	250 V AC	
Rated impulse withstand voltage $U_{imp}$	between coil and contacts	4000 V AC 1 min
	between open contacts	1000 V AC 1 min
Clearance	between coil and contacts	5.5 mm (0.217 in)
Creepage distance	between coil and contacts	8 mm (0.315 in)
Overtoltage category	III	
Pollution degree	2	
<b>General data</b>		
Dimensions (W x H x D)	28 x 5 x 15 mm (1.102 x 0.196 x 0.590 in)	
Weight	5 g (0.011 lb)	
Mounting	on socket	
Mounting position	any	
Degree of protection	RT II and RT III	
<b>Electrical connection</b>		
Connection	by socket	
<b>Environmental data</b>		
Ambient temperature range	operation	-40...+85 °C
	storage	0...+40 °C
Vibration resistance (10-150 Hz)	n/o contact	10 Hz to 55 Hz 1mm DA
	n/c contact	10 Hz to 55 Hz 1mm DA
Shock resistance	n/o contact	Functional 49 m/s <sup>2</sup> / Destructive 980 m/s <sup>2</sup>
	n/c contact	Functional 49 m/s <sup>2</sup> / Destructive 980 m/s <sup>2</sup>
<b>Standards</b>		
Product standard	IEC 61810-1	
Low Voltage Directive	2006/95/EC	

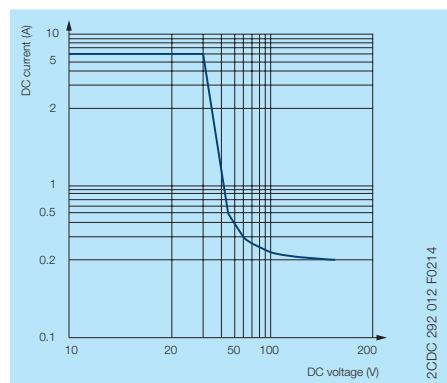
# Pluggable interface relays

## Technical data - CR-S range sockets

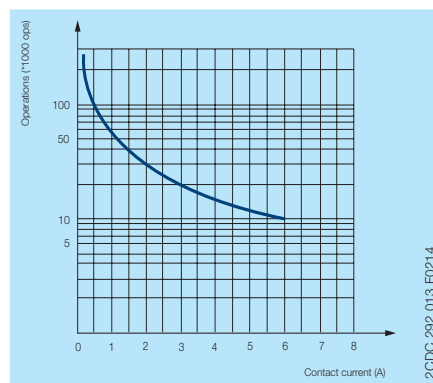
Input circuits	CR-S 6-24 V	CR-S 12-24 V	CR-S 48-60 V	CR-S 110-125 V	CR-S 220-240 V
Rated control supply voltage $U_s$	6-24 V DC	2-24 V AC/DC	48-60 V AC/DC	110-125 V AC/DC	220-240 V AC/DC
Rated control supply voltage $U_s$ tolerance	(0.8-1.2) $U_n$	(0.8-1.1) $U_n$			
Typical current	11-29 mA	11-16 mA	3.6-4.5 mA	3.6 mA	3.6 mA
Response time	8 ms				
Release time	4 ms				
Status device	green LED				
Protective circuit	yes				
<b>Output circuits</b>					
Output circuits	11-12/14				
Number of poles	1				
Rated voltage	250 V AC				
Rated current	6 A				
<b>General data for CR-S with screw connection terminal</b>					
Dimensions without holder (L x W x H)	88.3 x 6.3 x 70.9 mm (3.476 x 0.248 x 2.789 in)				
Degree of protection (EN 60529)	Degree of protection (EN 60529) IP20 (terminals)				
Temperature range	operation	-40...+70 °C			-40...+55 °C
	storage	0...+40 °C			
Connection type	Screw				
Maximum number of wires per connection terminal	2				
Wire size	rigid	1 x 2.5 mm <sup>2</sup> (1 x 14 AWG) ; 2 x 1.5 mm <sup>2</sup> (2 x 16 AWG)			
	fine-strand	1 x 2.5 mm <sup>2</sup> (1 x 14 AWG); 2 x 1.5 mm <sup>2</sup> (2 x 16 AWG)			
	with wire end ferule	1 x 2.5 mm <sup>2</sup> (1 x 14 AWG); 2 x 1.0 mm <sup>2</sup> (2 x 18 AWG)			
Tightening torque	0.5 Nm (4.426 lb.in)				
Stripping length	7 mm (0.276 in)				
Mounting (IEC/EN 60715)	DIN rail				
Material	socket	PA6 +GF-V2			
	contacts	CuZn36			
	contact surface	3 μ Ni/Sn			
	terminals	CuZn40, 3 μ Ni			
	combi screw M3	Fe			
<b>General data for CR-S with spring connection terminal</b>					
Dimensions without holder (L x W x H)	88.3 x 6.3 x 70.9 mm (3.476 x 0.248 x 2.789 in)				
Degree of protection (EN 60529)	Degree of protection (EN 60529) IP20 (terminals)				
Temperature range	operation	-40...+70 °C			-40...+55 °C
	storage	0...+40 °C			
Connection type	Spring				
Maximum number of wires per connection terminal	1				
Wire size	2.5 mm <sup>2</sup> (14 AWG) rigid, fine-strand and with wire end ferule				
Stripping length	7 mm (0.276 in)				
Mounting (IEC/EN 60715)	DIN rail				
Material	socket	PA6 +GF-V2			
	contacts	CuZn36			
	contact surface	3 μ Ni/Sn			
	spring terminals	SUS301			
<b>Isolation data</b>					
Isolation between coil and contacts	5000 V AC				
Resistance to shock coil to contact	1000 MΩ				
Clearance and creepage distance	IEC/EN 61984				
<b>Standards</b>					
Product stancard	IEC/EN 61984: 2001				
Low Voltage Directive	2006/95/EC				

5

Load limit curves - Max. DC load breaking capacity



Endurance curve



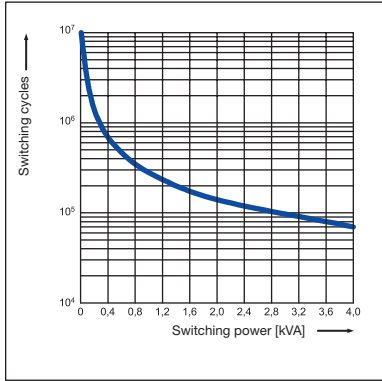
# Pluggable interface relays

## Load limit curves

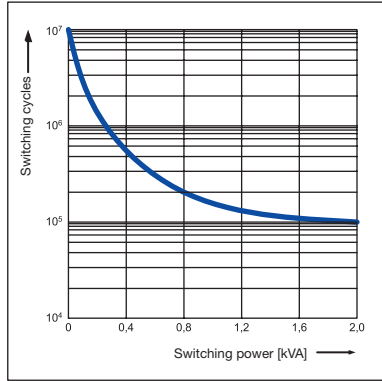
### Load limit curves - Electrical lifetime at resistive AC load

5

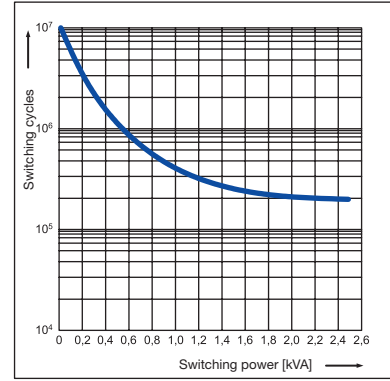
CR-P with 1 c/o contact



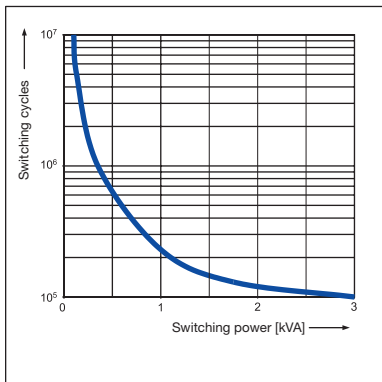
CR-P with 2 c/o contacts



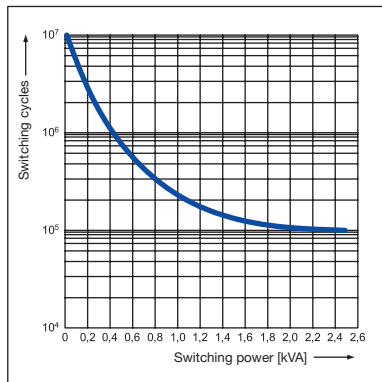
CR-U with 2 and 3 c/o contacts



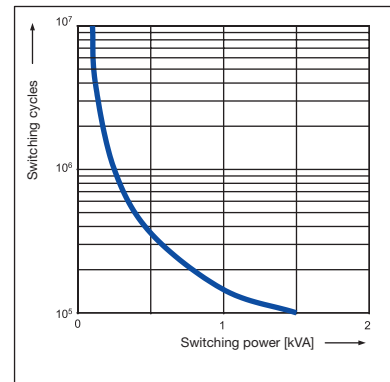
CR-M with 2 c/o contacts



CR-M with 3 c/o contacts

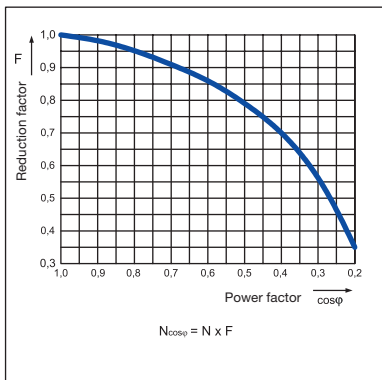


CR-M with 4 c/o contacts

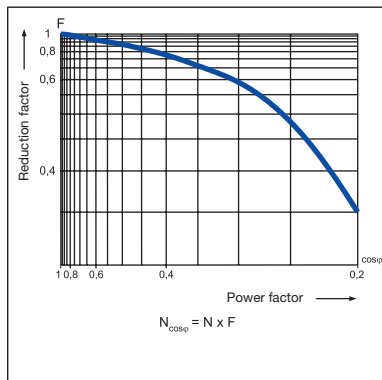


### Reduction factor F at inductive AC load

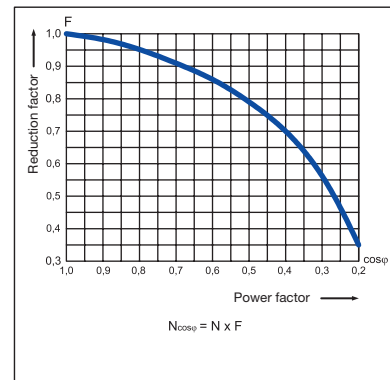
CR-P



CR-M



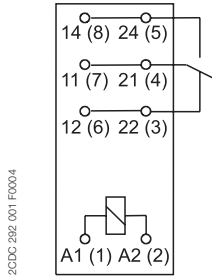
CR-U



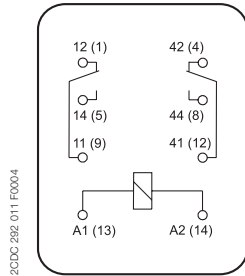
# Pluggable interface relays

## Connection diagrams, Dimensional drawings

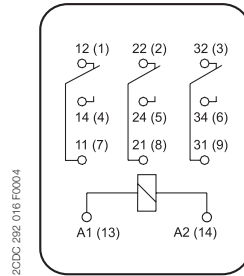
### Connection diagrams



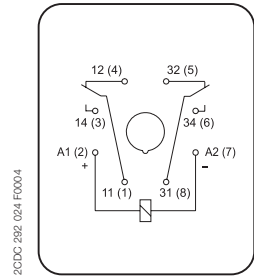
CR-P with 1 c/o contact



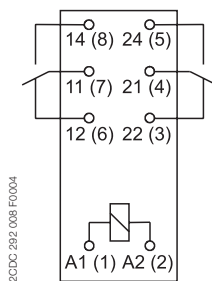
CR-M with 2 c/o contacts



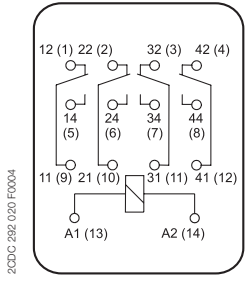
CR-M with 3 c/o contacts



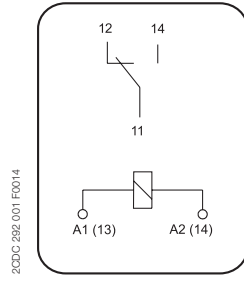
CR-U with 2 c/o contacts



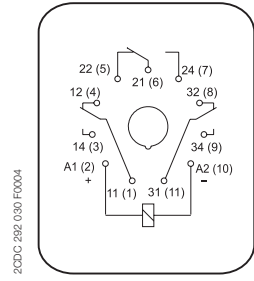
CR-P with 2 c/o contacts



CR-M with 4 c/o contacts

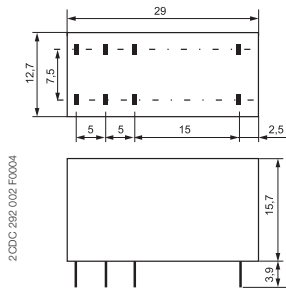


CR-S

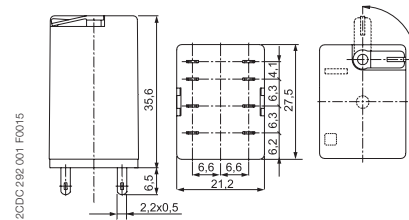


CR-U with 3 c/o contacts

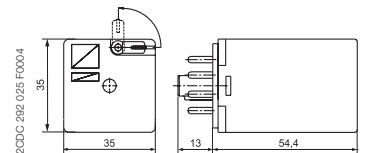
### Dimensional drawings Dimensions in mm and inches



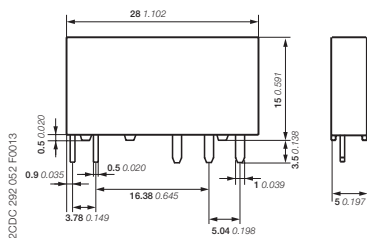
CR-P



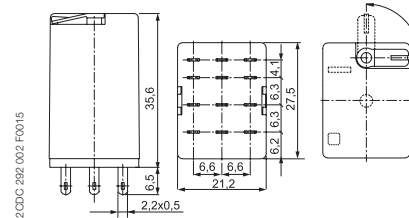
CR-M with 2 c/o contacts



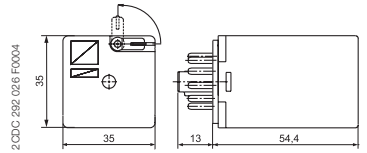
CR-U with 2 c/o contacts



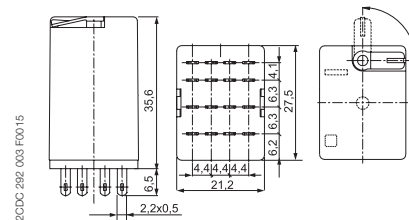
CR-S



CR-M with 3 c/o contacts



CR-U with 3 c/o contacts

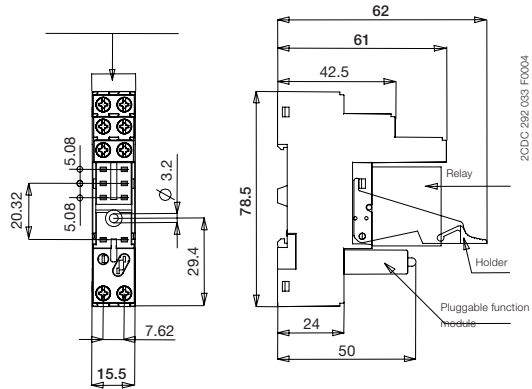
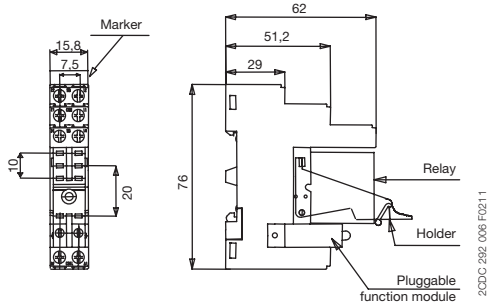


CR-M with 4 c/o contacts

# Pluggable interface relays

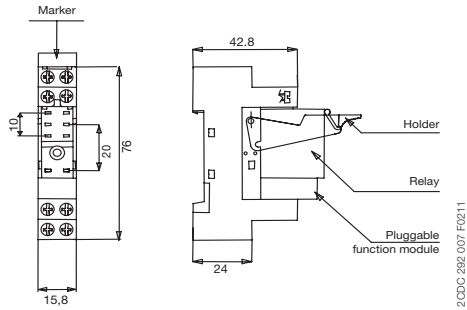
## Dimensional drawings

Dimensions in mm and inches

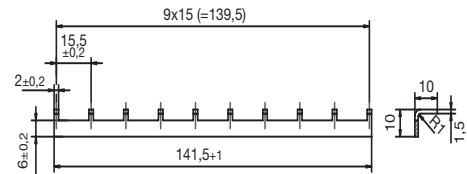


CR-PLS - screw connection

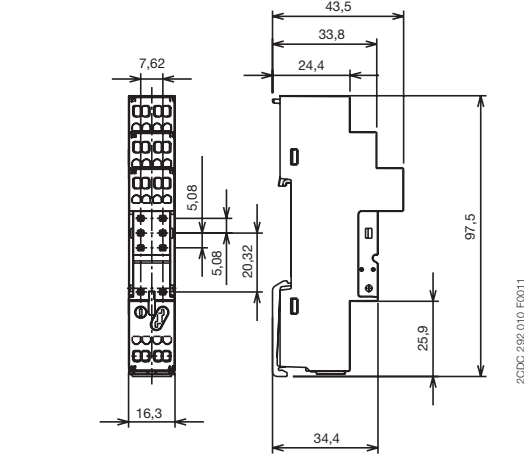
CR-PLSx - screw connection



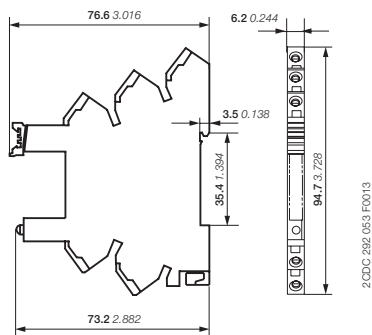
CR-PSS - screw connection



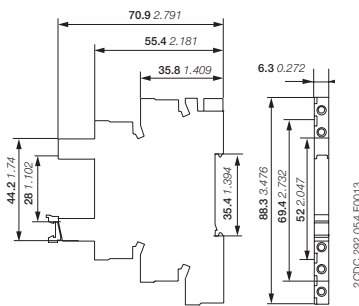
CR-PJ



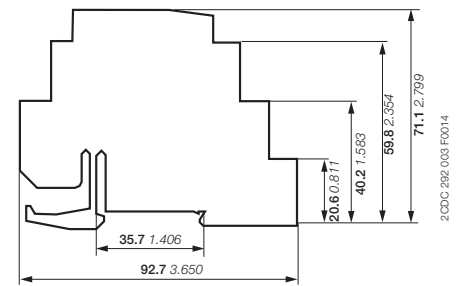
CR-PLC - spring connection



Spring socket for CR-S range interface relays

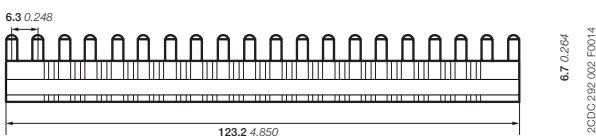


Screw socket for CR-S range interface relays



Separator for CR-S

Jumper

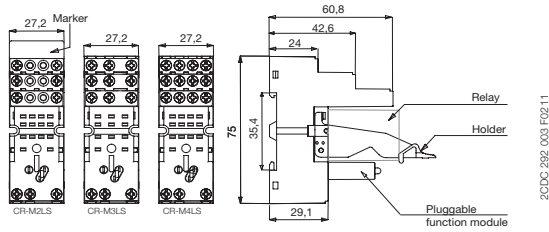


Jumper bar CR-S

# Pluggable interface relays

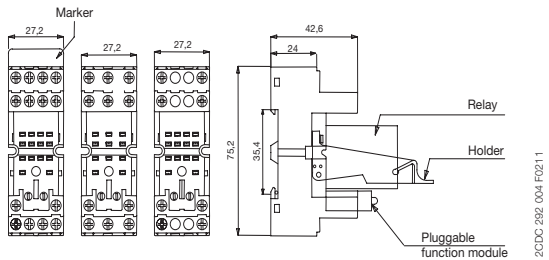
## Dimensional drawings

Dimensions in mm and inches



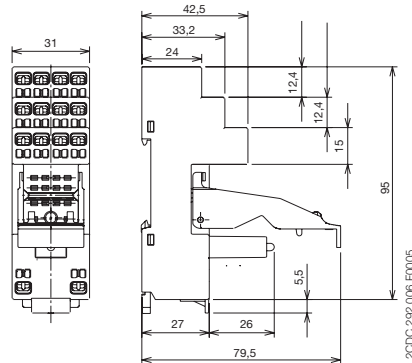
2CDC 292 003 F0211

CR-M2LS - CR-M3LS - CR-M4LS - screw connection



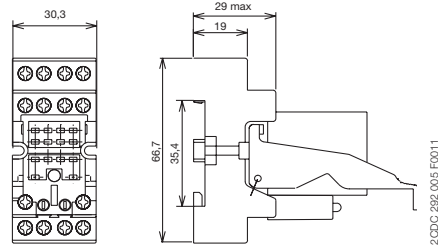
2CDC 292 004 F0211

CR-M2SS - CR-M3SS - CR-M4SS - screw connection



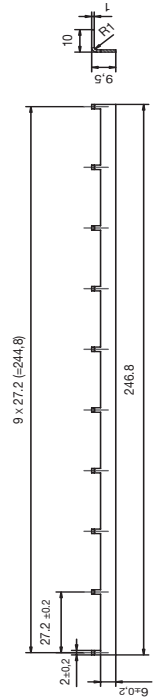
2CDC 292 006 F0005

CR-M2LC, CR-M4LC - spring connection



2CDC 292 005 F0011

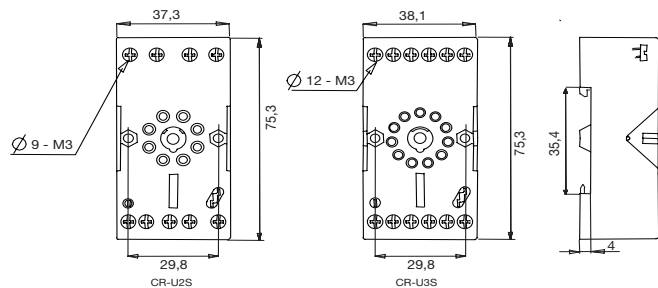
CR-MxSF - screw connection



CR-MJ

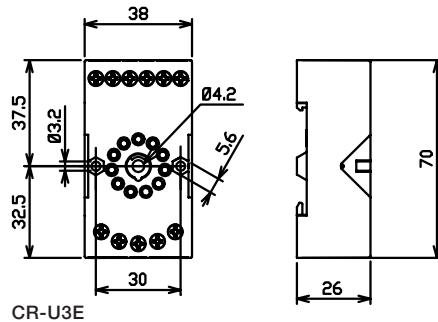
2CDC 292 011 F0011

5



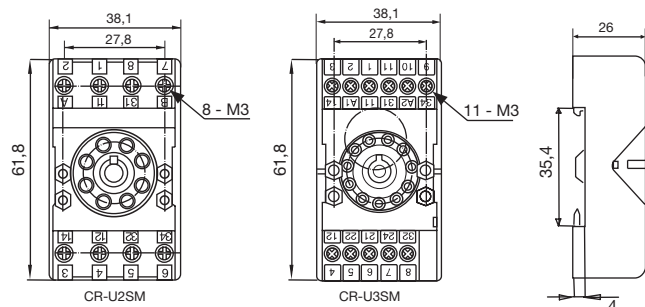
2CDC 292 008 F0011

CR-U2S - CR-U3S



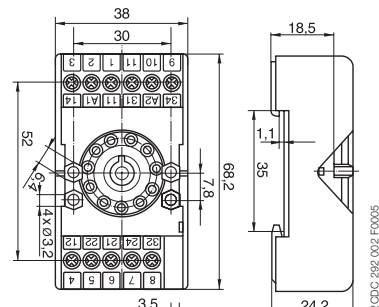
2CDC 292 081 F0004

CR-U3E



2CDC 292 009 F0011

CR-U2SM



2CDC 292 002 F0005

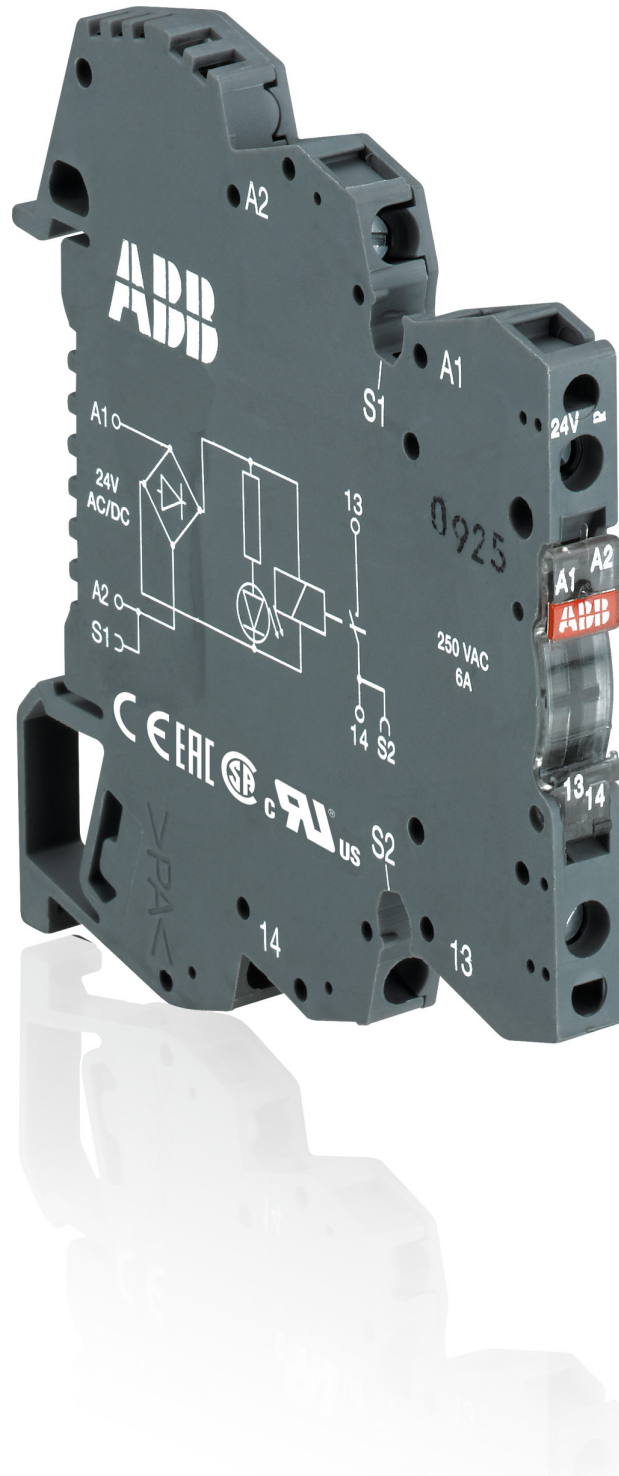
CR-U3SM



# Boxed interface relays and optocouplers R600 range

## Product group picture

5



# Boxed interface relays and optocouplers R600 range

## Table of contents

### Boxed\_Interface\_Relays\_and\_Optos

Boxed interface relays and optocouplers R600 range	298
Table of contents	298
Overview	299
Benefits and advantages	300
Boxed interface relays R600 range	301
Selection	301
Ordering details	303
Connection diagrams	305
Technical data	306
Dimensional drawings, Load limit curves	309
Boxed interface optocouplers R600 range	311
Selection	311
Ordering details	312
Connection diagrams, Dimensional drawings, Load limit curves	313
Technical data	314
Technical data, Dimensions	316

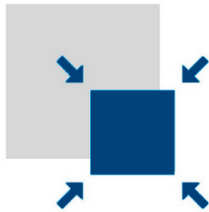
# Boxed interface relays and optocouplers R600 range

## Overview

ABB's R600 range of boxed interface relays and optocouplers are used for electrical isolation, amplification and signal matching between the control unit and the sensor/actuator level. The space saving design and different connection terminal possibilities optimize your panel installation.

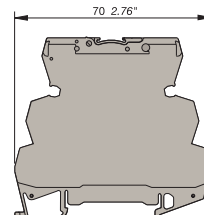
The broad portfolio of R600 range offers the most suitable interface solution for your application.

5

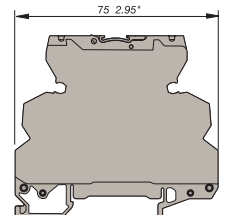


### Space saving

Thanks to the 6 mm slim and 70 mm short housing, you maximize the foot print of your panel. The 75 mm depth allows you use in a compact cabinet.



Screw clamp module

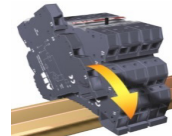


Spring clamp module



### Easy to install

The R600 interface relays and optocouplers are easy to mount by snapping onto a DIN-rail which is according to IEC/EN 60715. Time saving wiring thanks to jumper bar.



### Global availability

Applicable all over the world according to the highest standards. You will find R600 boxed interface relays and optocouplers in any application and every corner of the world.

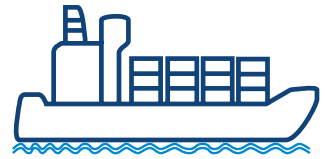


# Boxed interface relays and optocouplers R600 range

## Benefits and advantages

### Marine certification

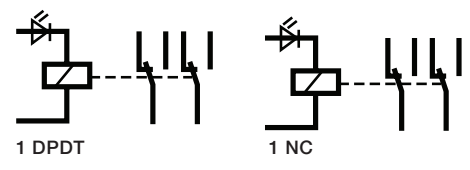
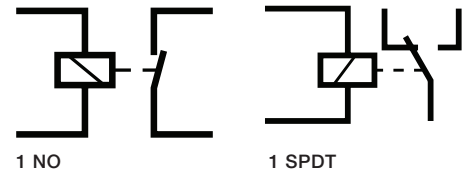
R600 Range offers the LR approval, which allows usage of the boxed interface relays and optocouplers in many applications around the marine segment. The performance of the R600 Range has proven by successfully passing tests required in the harshest conditions.



5

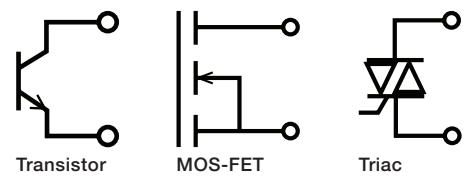
### Complete product line

1 n/o, 1 n/c, 1 c/o, 2 c/o output configuration. Standard contact material for switching high current signals as well as gold-plated contacts for reliable switching of low current signals.



Optocoupler with transistor, MOS-FET and triac output for longer life-time, higher reliability and quiet operation.

Screw and spring connection terminals.

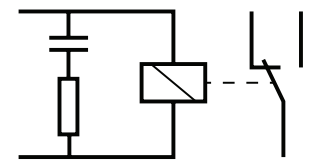


### Safe operation

High resistance to vibration and shock thanks to the relay soldered inside of the housing.

Wrong relay replacement or relay lose not possible .

Devices with immunity to the leakage currents.



Leakage current protection

### Clear functioning status

Green LED for the status of the supply control voltage applied.



# Boxed interface relays R600 range

## Selection

Type	Order number
RB121P-5VDC	1SNA645034R2300
RB121PG-5VDC	1SNA645036R2500
RBR121P-5VDC	1SNA645534R2500
RB121-12VDC	1SNA645073R0000
RB121P-12VDC	1SNA645038R2400
RB121G-12VDC	1SNA645075R0000
RBR121P-12VDC	1SNA645535R2600
RB101R-24VUC	1SNA645019R0400
RBR101R-24VUC	1SNA645519R0600
RB111-24VUC	1SNA645014R2700
RB111R-24VUC	1SNA645018R0300
RBR111R-24VUC	1SNA645518R0500
RBR111-24VUC	1SNA645514R2100
RB121-24VUC	1SNA645001R0300
RB121G-24VUC	1SNA645005R0700
RBR121-24VUC	1SNA645501R0500
RBR121G-24VUC	1SNA645505R0100
RB122G-24VUC	1SNA645012R2500
RBR122G-24VUC	1SNA645512R2700
RB121-24VDC	1SNA645071R0000
RBR121-24VDC	1SNA645571R0000
RB121G-24VDC	1SNA645072R0000
RBR121G-24VDC	1SNA645572R0000
RB121-48-60VUC	1SNA645002R0400
RBR121G-48-60VUC	1SNA645006R0000
RBR121-48-60VUC	1SNA645502R0600
RBR121G-48-60VUC	1SNA645506R0200

Input voltage	1	2	3	4	5	6	7	8	9	10	11	12	13	14	15	16	17	18	19	20	21	22	23	24	25	26	27	28	29	30
5 V DC	■	■	■																											
12 V DC				■	■	■	■																							
24 V DC								■	■	■	■	■	■	■	■	■	■	■	■	■	■	■	■	■	■	■	■	■	■	■
48-60 V DC																														■
115 V DC																														
230 V DC																														
60-230 V DC																														
24 V AC									■	■	■	■	■	■	■	■	■	■	■	■	■	■	■	■	■	■	■	■	■	■
48-60 V AC																														■
115 V AC																														
230 V AC																														
60-230 V AC																														

Output rating	1	2	3	4	5	6	7	8	9	10	11	12	13	14	15	16	17	18	19	20	21	22	23	24	25	26	27	28	29	30
10 mA - 6 A	■	■	■	■	■	■	■	■	■	■	■	■	■	■	■	■	■	■	■	■	■	■	■	■	■	■	■	■	■	■
3 mA - 6 A		■				■																								
1 mA - 8 A																														

Output contacts	1	2	3	4	5	6	7	8	9	10	11	12	13	14	15	16	17	18	19	20	21	22	23	24	25	26	27	28	29	30
c/o	1	1	1	1	1	1	1																							
n/o																														
n/c																														

Terminal type	1	2	3	4	5	6	7	8	9	10	11	12	13	14	15	16	17	18	19	20	21	22	23	24	25	26	27	28	29	30
Screw	■	■		■	■	■		■		■	■		■		■		■		■		■		■		■		■		■	
Spring			■				■				■			■			■			■			■			■			■	



# Boxed interface relays R600 range

## Ordering details



R600 - 6 mm

2CDC 291 024 S0013



R600 - 12 mm

2CDC 291 013 S0013

### 1 n/c contact: 250 V, 10 mA - 6 A, width 12 mm

Rated control supply voltage	Connection type	Particularities	Type	Order code	Pkg qty	Weight (1 pc) kg (lb)
24 V AC/DC	Screw	RC circuit parallel to output contact	RB101R-24VUC	1SNA645019R0400	5	0.04 (0.088)
	Spring		RBR101R-24VUC	1SNA645519R0600		

### 1 n/o contact: 250 V, 10 mA - 6 A, width 6 mm

Rated control supply voltage	Connection type	Particularities	Type	Order code	Pkg qty	Weight (1 pc) kg (lb)
24 V AC/DC	Screw		RB111-24VUC	1SNA645014R2700	10	0.02 (0.044)
115 V AC/DC	Screw		RB111-115VUC	1SNA645016R2100		
230 V AC/DC	Screw		RB111-230VUC	1SNA645017R2200		
24 V AC/DC	Spring		RBR111-24VUC	1SNA645514R2100		

### 1 n/o contact: 250 V, 10 mA - 6 A, width 12 mm

Rated control supply voltage	Connection type	Particularities	Type	Order code	Pkg qty	Weight (1 pc) kg (lb)
24 V AC/DC	Screw	RC circuit parallel to output contact	RB111R-24VUC	1SNA645018R0300	5	0.04 (0.088)
	Spring		RBR111R-24VUC	1SNA645518R0500		

### 1 c/o (SPDT) contact: 250 V, 10 mA - 6 A, width 6 mm

Rated control supply voltage	Connection type	Particularities	Type	Order code	Pkg qty	Weight (1 pc) kg (lb)
5 V DC	Screw	A1-A2 polarized	RB121P-5VDC	1SNA645034R2300	10	0.02 (0.044)
12 V DC	Screw	A1-A2 polarized	RB121P-12VDC	1SNA645035R2400		
12 V DC	Screw		RB121-12VDC	1SNA645073R0000		
24 V DC	Screw		RB121-24VDC	1SNA645071R0000		
24 V AC/DC	Screw		RB121-24VUC	1SNA645001R0300		
48-60 V AC/DC	Screw		RB121-48-60VUC	1SNA645002R0400		
115 V AC/DC	Screw		RB121-115VUC	1SNA645003R0500		
230 V AC/DC	Screw		RB121-230VUC	1SNA645004R0400		
5 V DC	Spring	A1-A2 polarized	RBR121P-5VDC	1SNA645534R2500		
12 V DC	Spring	A1-A2 polarized	RBR121P-12VDC	1SNA645535R2600		
24 V DC	Spring		RBR121-24VDC	1SNA645571R0000		
24 V AC/DC	Spring		RBR121-24VUC	1SNA645501R0500		
48-60 V AC/DC	Spring		RBR121-48-60VUC	1SNA645502R0600		
115 V AC/DC	Spring		RBR121-115VUC	1SNA645503R0700		
230 V AC/DC	Spring		RBR121-230VUC	1SNA645504R0000		

### 1 c/o (SPDT) contact: 250 V, 3 mA - 6 A, gold-plated contacts, width 6 mm

Rated control supply voltage	Connection type	Particularities	Type	Order code	Pkg qty	Weight (1 pc) kg (lb)
5 V DC	Screw	A1-A2 polarized	RB121PG-5VDC	1SNA645036R2500	10	0.02 (0.044)
12 V DC	Screw		RB121G-12VDC	1SNA645075R0000		
24 V DC	Screw		RB121G-24VDC	1SNA645072R0000		
24 V AC/DC	Screw		RB121G-24VUC	1SNA645005R0700		
48-60 V AC/DC	Screw		RB121G-48-60VUC	1SNA645006R0000		
115 V AC/DC	Screw		RB121G-115VUC	1SNA645007R0100		
230 V AC/DC	Screw		RB121G-230VUC	1SNA645008R1200		
24 V DC	Spring		RBR121G-24VDC	1SNA645572R0000		
24 V AC/DC	Spring		RBR121G-24VUC	1SNA645505R0100		
48-60 V AC/DC	Spring		RBR121G-48-60VUC	1SNA645506R0200		
115 V AC/DC	Spring		RBR121G-115VUC	1SNA645507R0300		
230 V AC/DC	Spring		RBR121G-230VUC	1SNA645508R1400		



Further documentation  
R600 range on [www.abb.com](http://www.abb.com)



# Boxed interface relays R600 range

## Ordering details

### 1 c/o (SPDT) contact: 250 V, 10 mA - 6 A, width 12 mm

Rated control supply voltage	Connection type	Particularities	Type	Order code	Pkg qty	Weight (1 pc) kg (lb)
60-230 V AC/DC	Screw		RB121-60-230VUC	1SNA645020R0100	5	0.04 (0.088)
115 V AC/DC	Screw	Leakage current protection, RC circuit parallel to input	RB121R-115VUC	1SNA645046R0700		
230 V AC/DC	Screw		RB121R-230VUC	1SNA645011R2400		
60-230 V AC/DC	Spring		RBR121-60-230VUC	1SNA645520R0300		
230 V AC/DC	Spring	Leakage current protection, RC circuit parallel to input	RBR121R-230VUC	1SNA645511R2600		

### 2 c/o (SPDT) contacts: 250 V, 1 mA - 8 A, gold-plated contacts, width 12 mm

Rated control supply voltage	Connection type	Type	Order code	Pkg qty	Weight (1 pc) kg (lb)
24 V AC/DC	Screw	RB122G-24VUC	1SNA645012R2500	5	0.04 (0.088)
48-60 V AC/DC	Screw	RB122G-48-60VUC	1SNA645040R1500		
115 V AC/DC	Screw	RB122G-115VUC	1SNA645041R0200		
230 V AC/DC	Screw	RB122G-230VUC	1SNA645013R2600		
24 V AC/DC	Spring	RBR122G-24VUC	1SNA645512R2700		
48-60 V AC/DC	Spring	RBR122G-48-60VUC	1SNA645540R1700		
115 V AC/DC	Spring	RBR122G-115VUC	1SNA645541R0400		
230 V AC/DC	Spring	RBR122G-230VUC	1SNA645513R2000		

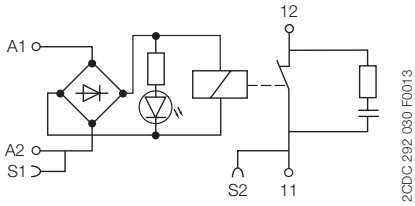
### Ordering details - Accessories

Description	Type	Order code	Pkg qty	Weight (1 pc) kg (lb)
Jumper bar, 10 poles	BJ612-10	1SNA290488R0100	10	0.05 (0.11)
Jumper bar, 20 poles	BJ612-20	1SNA206754R0000		0.01 (0.022)
Separator end section	SC612	1SNA290474R0200		0.05 (0.11)
Front marking blank cards, 100 pcs.	RC610	1SNA233000R0100		
Terminal marking blank cards, 100 pcs.	RC65	1SNA232000R0000		

# Boxed interface relays R600 range

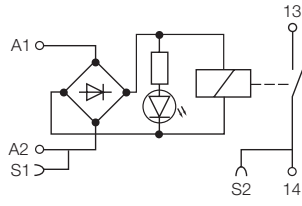
## Connection diagrams

5



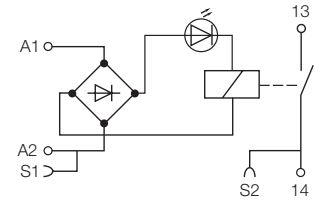
**RB(R)101R - 24VUC**

2CDC 292 030 F0013



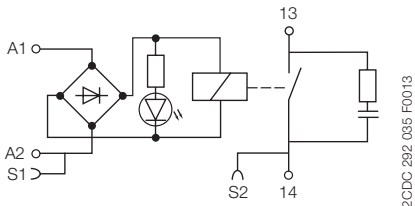
**RB(R)111-24VUC**

2CDC 292 031 F0013



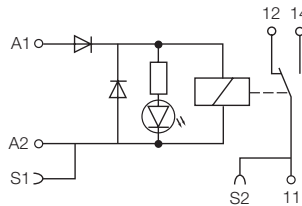
**RB111-115VUC/230VUC**

2CDC 292 033 F0013



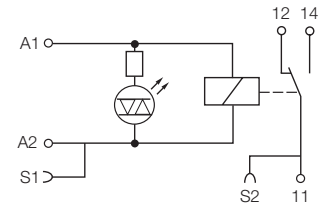
**RB(R)111R-24VUC**

2CDC 292 035 F0013



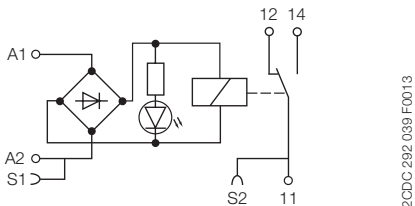
**RB(R)121P(G)-5VDC/12VDC**

2CDC 292 036 F0013



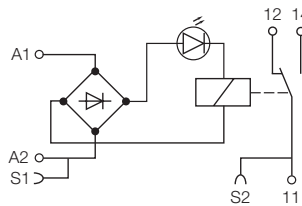
**RB(R)121-12VDC/24VDC**

2CDC 292 038 F0013



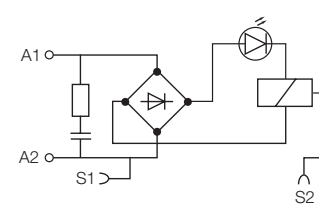
**RB(R)121(G)-24VUC**

2CDC 292 039 F0013



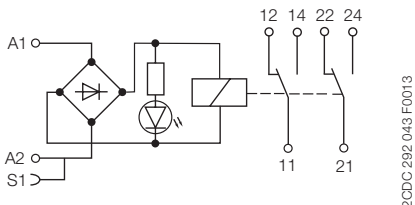
**RB(R)121(G)-48-60VUC/  
115VUC/230VUC/60-230VUC**

2CDC 292 040 F0013



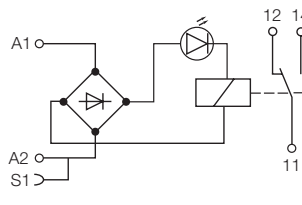
**RB(R)121R-115VUC/230VUC**

2CDC 292 042 F0013



**RB(R)122G-24VUC/48-60VUC**

2CDC 292 043 F0013



**RB(R)122G-115VUC/230VUC**

2CDC 292 044 F0013

# Boxed interface relays R600 range


## Technical data

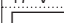
	RB(R)101R-		RB(R)111R-
	24VUC	24VUC	24VUC
<b>Input circuit</b>			
Rated control supply voltage $U_s$	24 V AC/DC		
Rated control supply voltage $U_s$ tolerance	DC	-15 %, +20 %	
	AC	-/+ 10 %	
Rated frequency	50/60 Hz		
Typical power consumption	0.24 W		
Typical current	10 mA		
Drop-out voltage	at 20 °C 4.5 V		
Indication of operational states	green LED	┐ : control supply voltage applied	
<b>Output circuit</b>			
Kind of output	11-12	relay, 1 n/c contact	-
	13-14	-	relay, 1 n/o contact
Rated operational voltage $U_o$ (IEC/EN 60947-1)	250 V AC		
Minimum switching voltage	12 V		
Maximum switching voltage	250 V AC		
Minimum switching current	10 mA		
Rated free air thermal current $I_{th}$	6 A		
Rated operational current $I_o$ (IEC/EN 60947-5-1)	AC-12 (resistive) 230 V	6 A	
	AC-15 (inductive) 230 V	1.5 A	
	AC-15 (inductive) 120 V	3 A	
	DC-12 (resistive) 24 V	6 A	
	DC-13 (inductive) 24 V	1 A	
	DC-13 (inductive) 110 V	0.2 A	
	DC-13 (inductive) 220 V	0.1 A	
AC rating (UL 508; NEMA ICS-5)	Utilization category (pilot duty)	B300	
DC rating (UL 508; NEMA ICS-5)	Utilization category (pilot duty)	R300	
Minimum switching power	0.6 W / 0.6 VA		
Mechanical lifetime	1 x 10 <sup>7</sup> switching cycles		
Electrical lifetime	at AC-15 1 x 10 <sup>5</sup> switching cycles		
Max. fuse rating to achieve short-circuit protection	6 A fast		
Response time	5 ms		
Release time	8 ms		

	RB(R)111-		
	24VUC	115VUC	230VUC
<b>Input circuit</b>			
Rated control supply voltage $U_s$	24 V AC/DC	115 V AC/DC	230 V AC/DC
Rated control supply voltage $U_s$ tolerance	DC -15 %, +20 %	-15 %, +10 %	
	AC -/+ 10 %		
Rated frequency	50/60 Hz		
Typical power consumption	0.24 W	0.46 W	0.8 W
Typical current	10 mA	4 mA	3.5 mA
Drop-out voltage	at 20 °C 4.5 V	17 V	27 V
Indication of operational states	green LED	┐ : control supply voltage applied	
<b>Output circuit</b>			
Kind of output	13-14	relay, 1 n/o contact	
Rated operational voltage $U_o$ (IEC/EN 60947-1)	250 V AC		
Minimum switching voltage	12 V		
Maximum switching voltage	250 V AC		
Minimum switching current	10 mA		
Rated free air thermal current $I_{th}$	6 A		
Rated operational current $I_o$ (IEC/EN 60947-5-1)	AC-12 (resistive) 230 V	6 A	
	AC-15 (inductive) 230 V	1.5 A	
	AC-15 (inductive) 120 V	3 A	
	DC-12 (resistive) 24 V	6 A	
	DC-13 (inductive) 24 V	1 A	
	DC-13 (inductive) 110 V	0.2 A	
	DC-13 (inductive) 220 V	0.1 A	
AC rating (UL 508; NEMA ICS-5)	Utilization category (pilot duty)	B300	
DC rating (UL 508; NEMA ICS-5)	Utilization category (pilot duty)	R300	
Minimum switching power	0.6 W / 0.6 VA		
Mechanical lifetime	1 x 10 <sup>7</sup> switching cycles		
Electrical lifetime	at AC-15 1 x 10 <sup>5</sup> switching cycles		
Max. fuse rating to achieve short-circuit protection	6 A fast		
Response time	5 ms	6 ms	7 ms
Release time	8 ms	15 ms	15 ms

# Boxed interface relays R600 range

## Technical data

		RB(R)121(P)(G)-							
		5VDC	12VDC	24VDC	24VUC	48-60VUC	115VUC	230VUC	
<b>Input circuit</b>									
Rated control supply voltage $U_s$		5 V DC	12 V DC	24 V DC	24 V AC/DC	48 V AC/DC	60 V AC/DC	115 V AC/DC	230 V AC/DC
Rated control supply voltage $U_s$	DC	-15 %, +20 %							
tolerance	AC			-/+ 10 %					
Rated frequency				50/60 Hz					
Typical power consumption		0.2 W	0.2 W	0.24 W		0.33 W	0.54 W	0.46 W	0.8 W
Typical current		40 mA	16 mA	10 mA		7 mA	9 mA	4 mA	3.5 mA
Drop-out voltage	at 20 °C	1.2 V	2.2 V	4.5 V		8 V	8 V	17 V	27 V
Indication of operational states	green LED	 l: control supply voltage applied							
<b>Output circuit</b>									
Kind of output	11-12/14	relay, 1 c/o (SPDT) contact							
Rated operational voltage $U_o$ (IEC/EN 60947-1)		250 V AC							
Minimum switching voltage		12 V / gold-plated contacts: 5 V							
Maximum switching voltage		250 V AC							
Minimum switching current		10 mA / gold-plated contacts: 3 mA at 20 V							
Rated free air thermal current $I_{th}$		6 A							
Rated operational current $I_e$ (IEC/EN 60947-5-1)	AC-12 (resistive) 230 V	6 A							
	AC-15 (inductive) 230 V	1.5 A							
	AC-15 (inductive) 120 V	3 A							
	DC-12 (resistive) 24 V	6 A							
	DC-13 (inductive) 24 V	1 A							
	DC-13 (inductive) 110 V	0.2 A							
	DC-13 (inductive) 220 V	0.1 A							
AC rating (UL 508; NEMA ICS-5)	Utilization category (pilot duty)	B300							
DC rating (UL 508; NEMA ICS-5)	Utilization category (pilot duty)	R300							
Minimum switching power		0.6 W / 0.6 VA; gold plated contacts: 0.06 V / 0.06 VA							
Mechanical lifetime		1 x 10 <sup>7</sup> switching cycles							
Electrical lifetime	at AC-15	1 x 10 <sup>5</sup> switching cycles							
Max. fuse rating to achieve short-circuit protection		6 A fast							
Response time		5 ms	5 ms	5 ms		5 ms	5 ms	6 ms	7 ms
Release time		8 ms	8 ms	8 ms		8 ms	8 ms	15 ms	16 ms

		RB(R)121R-							
		115VUC				230VUC			
<b>Input circuit</b>									
Rated control supply voltage $U_s$		115 V AC/DC				230 V AC/DC			
Rated control supply voltage $U_s$	DC	-20%, +15%				-10%, +15%			
tolerance	AC	-/+ 10 %							
Rated frequency		50/60 Hz							
Typical power consumption		2 W				2.8 W			
Typical current		18 mA				12 mA			
Drop-out voltage	at 20 °C	17 V				27 V			
Indication of operational states	green LED	 l: control supply voltage applied							
<b>Output circuit</b>									
Kind of output	11-12/14	relay, 1 c/o (SPDT) contact							
Rated operational voltage $U_o$ (IEC/EN 60947-1)		250 V AC							
Minimum switching voltage		12 V							
Maximum switching voltage		250 V AC							
Minimum switching current		10 mA							
Rated free air thermal current $I_{th}$		6 A							
Rated operational current $I_e$ (IEC/EN 60947-5-1)	AC-12 (resistive) 230 V	6 A							
	AC-15 (inductive) 230 V	1.5 A							
	AC-15 (inductive) 120 V	3 A							
	DC-12 (resistive) 24 V	6 A							
	DC-13 (inductive) 24 V	1 A							
	DC-13 (inductive) 110 V	0.2 A							
	DC-13 (inductive) 220 V	0.1 A							
AC rating (UL 508; NEMA ICS-5)	Utilization category (pilot duty)	B300							
DC rating (UL 508; NEMA ICS-5)	Utilization category (pilot duty)	R300							
Minimum switching power		0.6 W / 0.6 VA							
Mechanical lifetime		1 x 10 <sup>7</sup> switching cycles							
Electrical lifetime	at AC-15	1 x 10 <sup>5</sup> switching cycles							
Max. fuse rating to achieve short-circuit protection		6 A fast							
Response time		6 ms				7 ms			
Release time		15 ms				16 ms			

# Boxed interface relays R600 range

## Technical data

	RB(R)122G				
	24 V UC	48-60 V UC	60 V AC/DC	115 V UC	230 V UC
<b>Input circuit</b>					
Rated control supply voltage $U_s$	24 V AC/DC	48 V AC/DC	60 V AC/DC	115 V AC/DC	230 V AC/DC
Rated control supply voltage $U_s$ tolerance	DC -15 %, +20 % AC +/- 10 %				-15 %, +10 %
Rated frequency	50/60 Hz				
Typical power consumption	0.48 W	0.62 W	0.96 W	0.58 W	1.15 W
Typical current	20 mA	13 mA	16 mA	5 mA	5 mA
Drop-out at 20 °C	5.4 V	8.8 V	8.8 V V	20 V	10 V
Indication of operational states	green LED	L: control supply voltage applied			
<b>Output circuit</b>					
Kind of output	11-12/14 21-22/24	relay, 1st c/o (SPDT) contact relay, 2nd c/o (SPDT) contact			
Rated operational voltage $U_b$ (IEC/EN 60947-1)	250 V AC				
Minimum switching voltage	5 V				
Maximum switching voltage	250 V DC - 250 V AC				
Minimum switching current	1 mA				
Rated free air thermal current $I_{th}$	8 A				
Rated operational current $I_b$ (IEC/EN 60947-5-1)	AC-12 (resistive) 230 V	8 A			
	AC-15 (inductive) 230 V	1.5 A			
	DC-12 (resistive) 24 V	8 A			
	DC-13 (inductive) 24 V	1 A			
	DC-13 (inductive) 110 V	0.2 A			
	DC-13 (inductive) 220 V	0.1 A			
Minimum switching power	5 mW / 5 mVA				
Mechanical lifetime	2 x 10 <sup>7</sup> switching cycles				
Electrical lifetime at AC-15	1 x 10 <sup>5</sup> switching cycles				
Max. fuse rating to achieve short-circuit protection	10 A fast				
Response time	6 ms	10 ms	10 ms	6 ms	6 ms
Release time	10 ms	14 ms	14 ms	15 ms	15 ms

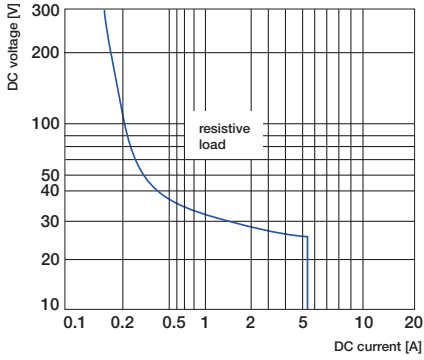
### General technical data - Interface relays

	RB	RBR
<b>General data</b>		
Material of housing	UL 94 V0	
Mounting	DIN Rail	
Degree of protection	housing / terminals	IP20 NEMA1
<b>Electrical connection</b>		
	<b>Screw terminal</b>	<b>Spring-type terminal</b>
Wire size	fine-strand 0.22-2.5 mm <sup>2</sup> (24-14 AWG) rigid 0.2-4 mm <sup>2</sup> (24-12 AWG)	0.2-2.5 mm <sup>2</sup> (24-14 AWG)
Stripping length	9 mm (0.354 in)	
Tightening torque	0.4-0.6 Nm (3.5-5.3 lb.in)	n/a
<b>Environmental data</b>		
Ambient temperature ranges	storage -40...+80 °C (-40...+176 °F) operation -20...+70 °C (-4...+158 °F)	
<b>Isolation data</b>		
Rated insulation voltage $U_i$	250 V	
Rated impulse withstand voltage $U_{imp}$	input / output 4 kV shock coil / output 4 kV output / output 1 kV	
Overvoltage category	III	
Pollution degree	2	
<b>Standards</b>		
Product standards	EN 60947-5-1	
Low Voltage Directive	2014/35/EC	
RoHS Directive	2011/65/EC	

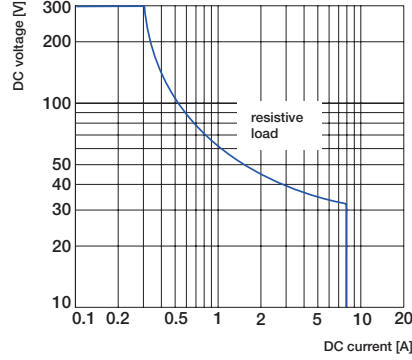
# Boxed interface relays R600 range

## Dimensional drawings, Load limit curves

### Load limit curves



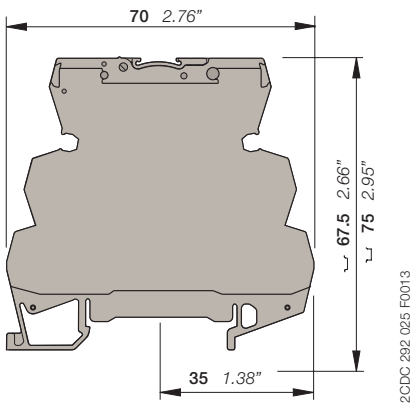
Versions with 1 n/o, 1 n/c or 1 c/o contact



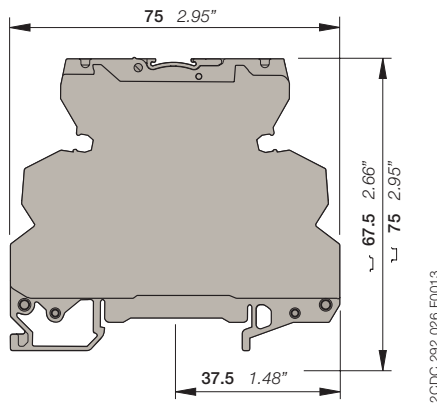
Versions with 2 c/o contacts

### Dimensions

in mm and inches



Versions with screw terminals



Versions with spring-type terminals



# Boxed interface relays R600 range

## Notes



# Boxed interface optocouplers R600 range

## Ordering details



R600 - 6 mm

### Transistor output, 58 V DC, 100 mA, width 6 mm

Rated control supply voltage	Connection type	Type	Order code	Pkg qty	Weight (1 pc) kg (lb)
5 - 12 V DC	Screw	OBIC0100-5-12VDC	1SNA645047R0000	10	0.02 (0.044)
24 V DC	Screw	OBIC0100-24VDC	1SNA645021R2600		
48 - 60 V AC/DC	Screw	OBIC0100-48-60VUC	1SNA645049R1200		
115 - 230 V AC/DC	Screw	OBIC0100-115-230	1SNA645022R2700	10	0.02 (0.044)
5 - 12 V DC	Spring	OBRIC0100-5-12VDC	1SNA645547R0200		
24 V DC	Spring	OBRIC0100-24VDC	1SNA645521R2000		
48 - 60 V AC/DC	Spring	OBRIC0100-48-60VUC	1SNA645549R1400		
115 - 230 V AC/DC	Spring	OBRIC0100-115-230	1SNA645522R2100		



R600 - 12 mm

### MOS-FET output, 58 V DC, 2 A, width 6 mm

Rated control supply voltage	Connection type	Type	Order code	Pkg qty	Weight (1 pc) kg (lb)
5 - 12 V DC	Screw	OBOC2000-5-12VDC	1SNA645050R1700	10	0.02 (0.044)
24 V DC	Screw	OBOC2000-24VDC	1SNA645051R0400		
24 V AC/DC	Screw	OBOC2000-24VUC	1SNA645025R2200		
48 - 60 V AC/DC	Screw	OBOC2000-48-60VUC	1SNA645053R0600		
115 V AC/DC	Screw	OBOC2000-115VUC	1SNA645054R0700		
230 V AC/DC	Screw	OBOC2000-230VUC	1SNA645026R2300	10	0.02 (0.044)
5 - 12 V DC	Spring	OBROC2000-5-12VDC	1SNA645550R1100		
24 V DC	Spring	OBROC2000-24VDC	1SNA645551R0600		
24 V AC/DC	Spring	OBROC2000-24VUC	1SNA645525R2400		
48 - 60 V AC/DC	Spring	OBROC2000-48-60VUC	1SNA645553R0000		
230 V AC/DC	Spring	OBROC2000-230VUC	1SNA645526R2500		

### MOS-FET output, 58 V DC, 5 A, width 6 mm

Rated control supply voltage	Connection type	Type	Order code	Pkg qty	Weight (1 pc) kg (lb)
24 V DC	Screw	OBOC5000-24VDC	1SNA645024R2100	10	0.02 (0.044)
115 V AC/DC	Screw	OBOC5000-115VUC	1SNA645058R1300	10	0.02 (0.044)
24 V DC	Spring	OBROC5000-24VDC	1SNA645524R2300		
230 V AC/DC	Spring	OBROC5000-230VUC	1SNA645559R1600		

### Triac output, 400 V AC, 1 A, width 6 mm

Rated control supply voltage	Connection type	Type	Order code	Pkg qty	Weight (1 pc) kg (lb)
24 V DC	Screw	OBOA1000-24VDC	1SNA645027R2400	10	0.03 (0.066)
115 V AC/DC	Screw	OBOA1000-115VUC	1SNA645062R0700		
230 V AC/DC	Screw	OBOA1000-230VUC	1SNA645028R0500		
24 V DC	Spring	OBROA1000-24VDC	1SNA645527R2600	10	

### Triac output, 230 V AC, 2 A, width 12 mm

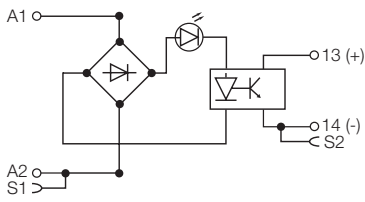
Rated control supply voltage	Connection type	Type	Order code	Pkg qty	Weight (1 pc) kg (lb)
24 V DC	Screw	OBOA2000-24VDC	1SNA645029R0600	5	0.03 (0.066)
24 V DC	Spring	OBROA2000-24VDC	1SNA645529R0000	5	

### Ordering details - Accessories

Description	Type	Order code	Pkg qty	Weight (1 pc) kg (lb)
Jumper bar, 10 poles	BJ612-10	1SNA290488R0100	10	
Jumper bar, 20 poles	BJ612-20	1SNA206754R0000		
Separator end section	SC612	1SNA290474R0200		
Front marking blank cards, 100 pcs.	RC610	1SNA233000R0100		
Terminal marking blank cards, 100 pcs.	RC65	1SNA232000R0000		

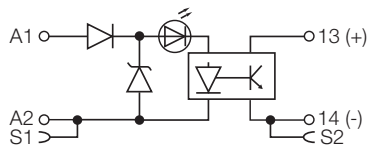
# Boxed interface optocouplers R600 range

## Connection diagrams, Dimensional drawings, Load limit curves



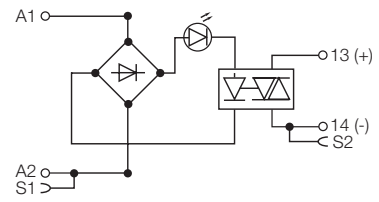
**OB(R)OC, OB(R)IC**  
except 5-12VDC versions

2CDC 292 019 F0016



**OB(R)IC0100-5-12VDC**  
**OB(R)OC2000-5-12VDC**

2CDC 292 017 F0016



**OB(R)OA**

2CDC 292 018 F0016

# Boxed interface optocouplers R600 range

## Technical data

	OB(R)IC0100-...						
	5-12 V DC		24 V DC	48-60 V UC		115-230	
<b>Input circuit</b>							
Input voltage	5 V DC	12 V DC	24 V DC	48 V AC/DC	60 V AC/DC	115 V AC/DC	230 V AC/DC
Frequency	-						
Input current	5 mA	9 mA	4 mA	4 mA	5 mA	7 mA (AC) 16 mA (DC)	11.5 mA (AC) 25 mA (DC)
Pull-in voltage	4 V		15 V	25 V		60 V AC / 70 V DC	
Typ. switch-on time	10 µs			5 ms			
Typ. switch-off time	500 µs			20 ms			
Operating frequency	1000 Hz			20 Hz			
Permissible leakage current	0.9 mA		1.0 mA	0.9 mA		1.6 mA	
<b>Output circuit</b>							
<b>11(13+)- 14</b>							
Kind of output	Transistor						
Rated operational voltage	4.5-58 V DC						
Minimum switching current	1 mA						
Maximum switching current	100 mA						
Leakage current at max. switching voltage	< 50 µA						
Rated operational current I <sub>e</sub> (IEC/EN 60947-5-1)	DC-12 (resistive) 58 V 0.1 A						
Residual voltage	typical 1 V maximum 1.3 V						
Max. fuse rating to achieve short-circuit protection	100 mA fast						
<b>Isolation data</b>							
Rated insulation voltage U <sub>i</sub>	250 V						
Rated impulse withstand voltage U <sub>imp</sub>	2.5 kV						
Overvoltage category	II						
Pollution degree	2						

	OB(R)OC2000-...							
	5-12 V DC		24 V DC	24 V UC	48-60 V UC		115 V UC	230 V UC
<b>Input circuit</b>								
Input voltage	5 V DC	12 V DC	24 V DC	24 V AC/DC	48 V AC/DC	60 V AC/DC	115 V AC/DC	230 V AC/DC
Frequency	-							
Input current	5 mA	9 mA	5.4 mA	6.3 mA	4 mA	5.1 mA	4.2 mA	4 mA
Pull-in voltage	4 V		12 V	15 V	27 V		50 V	80 V
Typ. switch-on time	15 µs		30 µs	1 ms	5 ms		500 µs	1 ms
Typ. switch-off time	250 µs		400 µs	7 ms	20 ms		10 ms	15 ms
Operating frequency	2000 Hz		1000 Hz	60 Hz	20 Hz		50 Hz	35 Hz
Permissible leakage current	1 mA		0.8 mA	0.9 mA	1 mA		0.3 mA	
<b>Output circuit</b>								
<b>11(13+)- 14</b>								
Kind of output	MOS-FET							
Rated operational voltage	4.5-58 V DC							
Minimum switching current	1 mA							
Maximum switching current	2 A							
Leakage current at max. switching voltage	< 50 µA							
Rated operational current I <sub>e</sub> (IEC/EN 60947-5-1)	DC-12 (resistive) 58 V 2 A							
Residual voltage	typical 0.1 V maximum 0.5 V							
Max. fuse rating to achieve short-circuit protection	2 A ultra-fast							
<b>Isolation data</b>								
Rated insulation voltage U <sub>i</sub>	250 V							
Rated impulse withstand voltage U <sub>imp</sub>	2.5 kV							
Overvoltage category	II							
Pollution degree	2							

# Boxed interface optocouplers R600 range

## Technical data

5

	OB(R)OC5000-...		
	24VDC	115VUC	230VUC
<b>Input circuit</b>			
Input voltage	24 V DC	115 V AC/DC	230 V AC/DC
Frequency	-	50/60 Hz	-
Input current	5.4 mA	4.2 mA	4 mA
Pull-in voltage	12 V	50 V	80 V
Typ. switch-on time	30 µs	500 µs	1 ms
Typ. switch-off time	400 µs	10 ms	15 ms
Operating frequency	1000 Hz	50 Hz	35 Hz
Permissible leakage current	0.8 mA	0.3 mA	0.3 mA
<b>Output circuit</b>			
Kind of output	11(13+)- 14		
Kind of output	MOS-FET		
Rated operational voltage	4.5-58 V DC		
Minimum switching current	1 mA		
Maximum switching current	5 A		
Leakage current at max. switching voltage	< 50 µA		
Rated operational current DC-12 (resistive) 58 V	5 A		
I <sub>c</sub> (IEC/EN 60947-5-1)			
Residual voltage	typical	0.1 V	
	maximum	0.5 V	
Max. fuse rating to achieve short-circuit protection	6 A ultra-fast		
<b>Isolation data</b>			
Rated insulation voltage U <sub>i</sub>	250 V		
Rated impulse withstand voltage U <sub>imp</sub>	2.5 kV		
Overvoltage category	II		
Pollution degree	2		

	OB(R)OA1000-...			OB(R)OA2000-...
	24VDC	115VUC	230VUC	24VDC
<b>Input circuit</b>				
Input voltage	24 V DC	115 V AC/DC	230 V AC/DC	24 V DC
Frequency	-	50/60 Hz	-	-
Input current	3.6 mA	4.15 mA	4.6 mA	3.6 mA
Pull-in voltage	14 V	60 V	135 V	14 V
Typ. switch-on time	150 µs	2.2 ms	2.5 ms	150 µs
Typ. switch-off time	1 ms	18 ms	25 ms	1 ms
Operating frequency	500 Hz	25 Hz	20 Hz	500 Hz
Permissible leakage current	1 mA			1 mA
<b>Output circuit</b>				
Kind of output	11(13+)- 14			Triac
Kind of output	Triac			Triac
Rated operational voltage	24-400 V AC			10-230 V AC
Minimum switching current	25 mA			25 mA
Maximum switching current	1 A			2 A
Leakage current at max. switching voltage	< 500 µA			< 500 µA
Rated operational current AC-12 (resistive) 400 V	1 A			-
Rated operational current I <sub>c</sub> AC-12 (resistive) 230 V (IEC/EN 60947-5-1)	-			2A
Residual voltage	typical	1 V		1 V
	maximum	1.6 V		1.6 V
Max. fuse rating to achieve short-circuit protection	4 A ultra-fast			4 A ultra-fast
<b>Isolation data</b>				
Rated insulation voltage U <sub>i</sub>	400 V			230 V
Rated impulse withstand voltage U <sub>imp</sub>	4 kV			4 kV
Overvoltage category	II			II
Pollution degree	2			2



# Boxed interface optocouplers R600 range

## Technical data, Dimensions

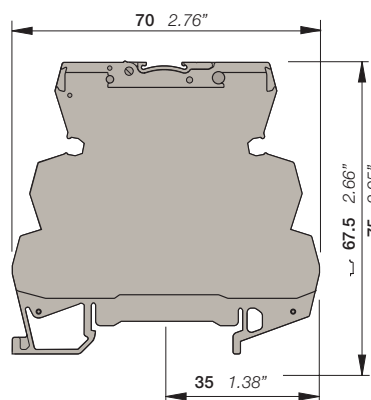
### General technical data - Optocouplers

		OB	OBR
<b>General data</b>			
Material of housing		UL 94 V0	
Mounting		DIN Rail	
Degree of protection	housing / terminals	IP20 NEMA1	
<b>Electrical connection</b>		<b>Screw terminal</b>	<b>Spring-type terminal</b>
Wire size	fine-strand	0.22-2.5 mm <sup>2</sup> (24-14 AWG)	
	rigid	0.2-4 mm <sup>2</sup> (24-12 AWG)	0.2-2.5 mm <sup>2</sup> (24-14 AWG)
Stripping length		9 mm (0.354 in)	
Tightening torque		0.4-0.6 Nm (3.5-5.3 lb.in)	n/a
<b>Environmental data</b>			
Ambient temperature ranges	storage	-40...+80 °C (-40...+176 °F)	
	operation	-20...+70 °C (-4...+158 °F)	
<b>Standards</b>			
Product standards		EN 60947-5-1	
Low Voltage Directive		2014/35/EC	
RoHS Directive		2011/65/EC	

5

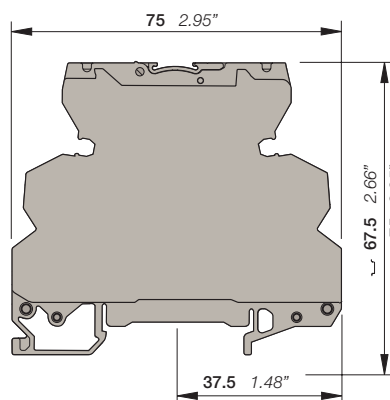
### Dimensions

in **mm** and inches



Versions with screw terminals

2CDC 292 025 F0013



Versions with spring-type terminals

2CDC 292 026 F0013