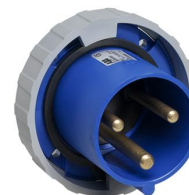


ABB360B7W



Ind. P&S#ABB360B7W



General Information

Extended Product Type	ABB360B7W
Product ID	2CMA100348R1000
EAN	7392696003483
Catalog Description	Ind. P&S#ABB360B7W
Long Description	IEC Inlet 60A 2P3W 480V Clock Position Of Grounding Contact 7 hour Color code Red

Ordering

EAN	7392696003483
Minimum Order Quantity	1 piece
Country of Origin	Czech Republic (CZ)

Dimensions

Product Net Width	103 mm
Product Net Height	126 mm
Product Net Length	114 mm
Product Net Depth / Length	114 mm
Product Net Weight	0.57 kg

Container Information

Package Level 1 Width	112 mm
Package Level 1 Depth / Length	112 mm
Package Level 1 Height	139 mm
Package Level 1 Gross Weight	0.57 kg
Package Level 1 EAN	7392696003483
Package Level 1 Units	1 piece
Package Level 2 Units	350 piece

Technical UL/CSA

Ampere Rating UL/CSA	60 A
----------------------	------

Certificates and Declarations (Document Number)

Declaration of Conformity - CE	2CMC700005D0020
Declaration	2CMC700005D0020
Environmental Information	2CMC000056M0000
RoHS Information	2CMC700005D0020
UL Certificate	E109550-19950105-UL_cert_P_B

Additional Information

Additional Information	2P+E
Cable Cross-Section	4 ... 16 mm ²
Color	Red
Connection Type	Screw clamp
Degree of Protection	IP67 IP69
Enclosure Material	Thermoplastic polyester (PBT)
Frequency (f)	50 Hz 60 Hz
Function	Inlet
Housing Material	Thermoplastic (PBT)
Invoice Description	Ind. P&S#ABB360B7W
Mounting Holes	61x61
Number of Poles	3
Order Multiple	1 piece
Product Main Type	TBU
Product Name	Panel mounted inlet
Protection Type	Watertight
Rated Current (I_n)	60 A
Rated Voltage (U_r)	480 V
Recommended Screw Driver	PH2
RoHS Date	L23
Standards	UL 1682, 1686 / CSA C22.2 No. 182.1-13

Classifications

eClass	27440519
UNSPSC	39120000

Categories

Low Voltage Products and Systems → Industrial Plugs and Sockets → Tough & Safe → Plugs

