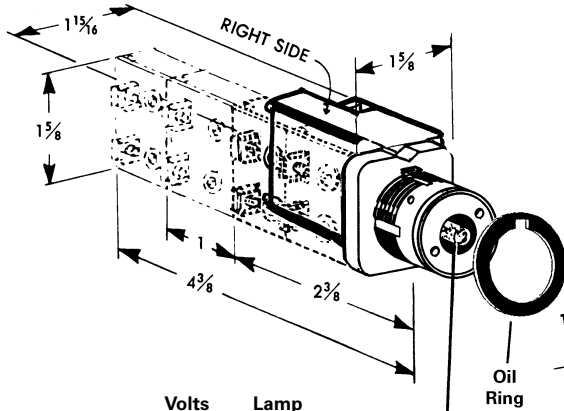


Instructions

52-HSA7

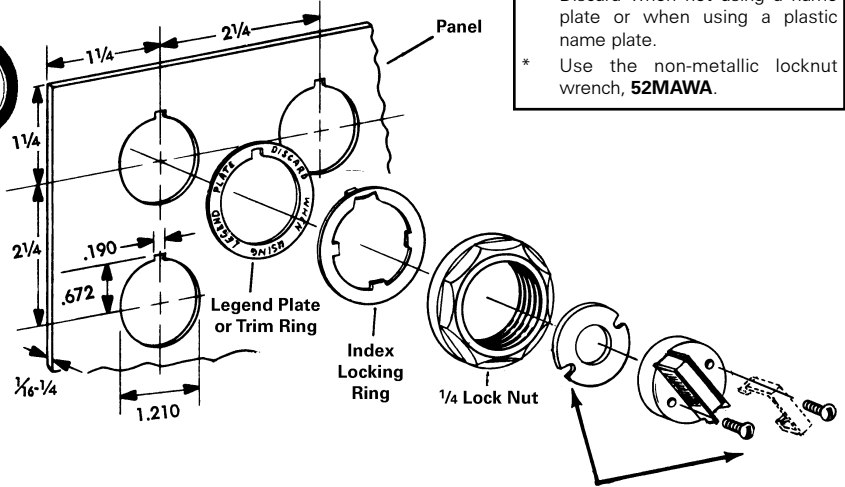
July, 2000
Supersedes Issue of
October, 1994

Oil Tight Illuminated Selector
When installed as indicated, these operators are suitable
for use in Type 1, 3, 3R, 4, 4x, 12, or 13 enclosures.
Class 52
52SA7



Volts	Lamp
6-8*	#755
24	#1829
120	#120MB

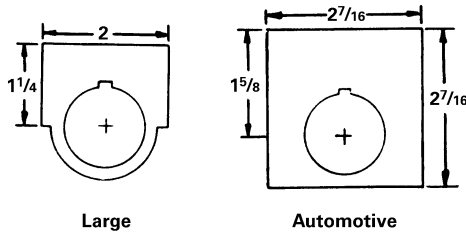
* Also transformer type
Typical spacing shown.
Automotive legend requires $2\frac{1}{2}$ " spacing.



Notes for BlackMax 4X devices:

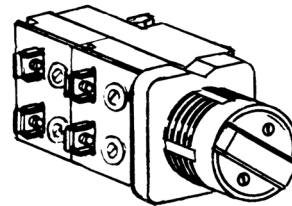
- * The trim ring and spacer are not needed or supplied.
- * Only use the index locking ring when using a metal nameplate. Discard when not using a name plate or when using a plastic name plate.
- * Use the non-metallic locknut wrench, **52MAWA**.

Legend Plates



LENS KIT

Red . . . 52RA6P2
Green . . . 52RA6P3

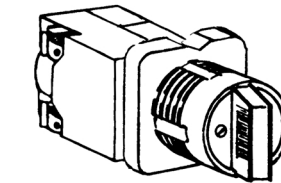


CAM A OPERATION
Contact Blocks mount on left side.
Pilot light assembly mounts on right side.

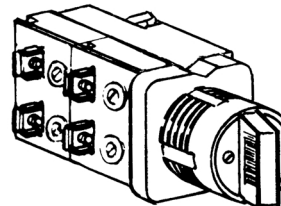
SELECTOR CONTACT AND CAM FUNCTIONS

Contact Function For Selector Position			Cam	Contact Block		
Left	Right	Location		Contacts	Cat. No.	
\	/		2 Position			
X			A	L	NC	52BAJ
	X			L	NO	52BAK
\		/	3 Position			
		X	B	R	NC	52BAJ
	X			R	NO	52BAK
X				L	NC	52BAJ
		X	C	L	NO	52BAK

LEGEND: X Closed Contacts L Left Side R Right Side NO Normally Open NC Normally Closed



CAM B OPERATION
Contact Blocks mount on right side. Pilot light assembly mounts on left side.



CAM C OPERATION
Contact Blocks mount on left side. Pilot light assembly mounts on right side.

NOTE: Cam is identified by the 6th character of Cat. No.

NOTE: Contact Blocks and Lens Kits are ordered as required.

(For Engineering Reference Only - Rev. D)