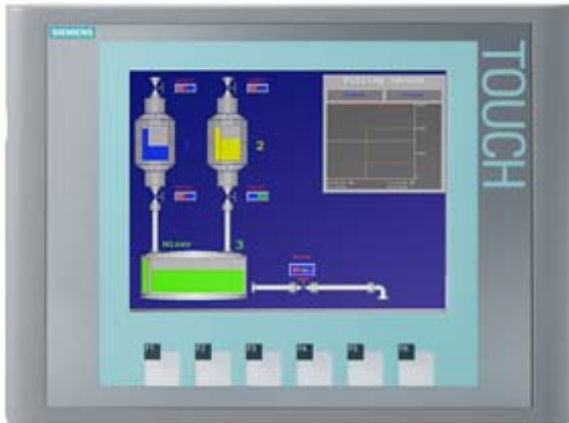


SIPLUS HMI KTP600 Basic Color PN -25...+60°C with conformal coating based on "6AV6647-0AD11-3AX0" "5.7" TFT "display, 256 colors" Ethernet" interface



### General information

Product type designation	KTP600 Basic color PN
--------------------------	-----------------------

### Display

Design of display	TFT
Screen diagonal	5.7 in
Display width	115.2 mm
Display height	86.4 mm
Number of colors	256

### Resolution (pixels)

- |                               |           |
|-------------------------------|-----------|
| • Horizontal image resolution | 320 Pixel |
| • Vertical image resolution   | 240 Pixel |

### Backlighting

- |                                |          |
|--------------------------------|----------|
| • MTBF backlighting (at 25 °C) | 50 000 h |
| • Backlight dimmable           | No       |

### Control elements

#### Keyboard fonts

- |                           |   |
|---------------------------|---|
| • Function keys           |   |
| — Number of function keys | 6 |

— Number of function keys with LEDs	0
• Keys with LED	No
• System keys	No
• Numeric keyboard	Yes; Onscreen keyboard
• alphanumeric keyboard	Yes; Onscreen keyboard
<b>Touch operation</b>	
• Design as touch screen	Yes
<b>Installation type/mounting</b>	
Mounting position	vertical
Mounting in portrait format possible	Yes
Mounting in landscape format possible	Yes
maximum permissible angle of inclination without external ventilation	35°
<b>Supply voltage</b>	
Type of supply voltage	DC
Rated value (DC)	24 V
permissible range, lower limit (DC)	19.2 V
permissible range, upper limit (DC)	28.8 V
<b>Input current</b>	
Current consumption (rated value)	0.35 A
Starting current inrush I <sup>2</sup> t	0.5 A <sup>2</sup> ·s
<b>Power</b>	
Active power input, typ.	9 W
<b>Processor</b>	
Processor type	RISC 32 bit
<b>Memory</b>	
Flash	Yes
RAM	Yes
Memory available for user data	1 Mbyte
<b>Type of output</b>	
Acoustics	
• Buzzer	Yes
• Speaker	No
<b>Time of day</b>	
Clock	
• Hardware clock (real-time)	No
• Software clock	Yes
• retentive	No
• synchronizable	Yes

Interfaces	
Number of industrial Ethernet interfaces	1
Number of RS 485 interfaces	0
Number of RS 422 interfaces	0
Number of RS 232 interfaces	0
Number of USB interfaces	0
Number of 20 mA interfaces (TTY)	0
Number of parallel interfaces	0
Number of other interfaces	0
Number of SD card slots	0
With software interfaces	No
Industrial Ethernet	
<ul style="list-style-type: none"> <li>Industrial Ethernet status LED</li> </ul>	2
Protocols	
PROFINET	Yes
Supports protocol for PROFINET IO	No
IRT	No
PROFIBUS	No
MPI	No
Protocols (Ethernet)	
<ul style="list-style-type: none"> <li>TCP/IP</li> <li>DHCP</li> <li>SNMP</li> <li>DCP</li> <li>LLDP</li> </ul>	Yes Yes Yes Yes Yes
WEB characteristics	
<ul style="list-style-type: none"> <li>HTTP</li> <li>HTML</li> </ul>	No No
Further protocols	
<ul style="list-style-type: none"> <li>CAN</li> <li>EtherNet/IP</li> <li>MODBUS</li> </ul>	No Yes Yes; Modicon (MODBUS TCP/IP)
Interrupts/diagnostics/status information	
Diagnostic messages	
<ul style="list-style-type: none"> <li>Diagnostic information readable</li> </ul>	No
Degree and class of protection	
IP (at the front)	IP65
Enclosure Type 4 at the front	Yes
Enclosure Type 4x at the front	Yes
IP (rear)	IP20
Ambient conditions	

Suited for indoor use	Yes
Suited for outdoor use	No
<b>Ambient temperature during operation</b>	
<ul style="list-style-type: none"> <li>• Operation (vertical installation) <ul style="list-style-type: none"> <li>— For vertical installation, min. -25 °C</li> <li>— For vertical installation, max. 60 °C</li> </ul> </li> <li>• Operation (max. tilt angle) <ul style="list-style-type: none"> <li>— At maximum tilt angle, min. -25 °C</li> <li>— At maximum tilt angle, min. 40 °C</li> </ul> </li> </ul>	
<b>Ambient temperature during storage/transportation</b>	
<ul style="list-style-type: none"> <li>• min. -30 °C</li> <li>• max. 60 °C</li> </ul>	
<b>Altitude during operation relating to sea level</b>	
<ul style="list-style-type: none"> <li>• Installation altitude above sea level, max. 5 000 m</li> <li>• Ambient air temperature-barometric pressure-altitude Tmin ... Tmax at 1 140 hPa ... 795 hPa (-1 000 m ... +2 000 m) // Tmin ... (Tmax - 10 K) at 795 hPa ... 658 hPa (+2 000 m ... +3 500 m) // Tmin ... (Tmax -20 K) at 658 hPa ... 540 hPa (+3 500 m ... +5 000 m)</li> </ul>	
<b>Relative humidity</b>	
<ul style="list-style-type: none"> <li>• With condensation, tested in accordance with IEC 60068-2-38, max. 100 %; RH incl. condensation/frost (no commissioning under condensation conditions)</li> </ul>	
<b>Resistance</b>	
<b>Coolants and lubricants</b>	
<ul style="list-style-type: none"> <li>— Resistant to commercially available coolants and lubricants</li> </ul>	Yes; Incl. diesel and oil droplets in the air
<b>Use in stationary industrial systems</b>	
<ul style="list-style-type: none"> <li>— to biologically active substances according to EN 60721-3-3</li> <li>— to chemically active substances according to EN 60721-3-3</li> <li>— to mechanically active substances according to EN 60721-3-3</li> </ul>	<p>Yes; Class 3B2 mold, fungus and dry rot spores (with the exception of fauna); Class 3B3 on request</p> <p>Yes; Class 3C4 (RH &lt; 75 %) incl. salt spray acc. to EN 60068-2-52 (severity degree 3); *</p> <p>Yes; Class 3S4 incl. sand, dust; *</p>
<b>Use on ships/at sea</b>	
<ul style="list-style-type: none"> <li>— to biologically active substances according to EN 60721-3-6</li> <li>— to chemically active substances according to EN 60721-3-6</li> <li>— to mechanically active substances according to EN 60721-3-6</li> </ul>	<p>Yes; Class 6B2 mold and fungal spores (excluding fauna); Class 6B3 on request</p> <p>Yes; Class 6C3 (RH &lt; 75 %) incl. salt spray acc. to EN 60068-2-52 (severity degree 3); *</p> <p>Yes; Class 6S3 incl. sand, dust; *</p>
<b>Remark</b>	
<ul style="list-style-type: none"> <li>— Note regarding classification of environmental conditions acc. to EN 60721, EN 60654-4 and ANSI/ISA-71.04</li> </ul>	* The supplied plug covers must remain in place over the unused interfaces during operation!
<b>Conformal coating</b>	

- Coatings for printed circuit board assemblies acc. to EN 61086
- Protection against fouling acc. to EN 60664-3
- Military testing according to MIL-I-46058C, Amendment 7
- Qualification and Performance of Electrical Insulating Compound for Printed Board Assemblies according to IPC-CC-830A

Yes; Class 2 for high availability

Yes; Type 1 protection

Yes; Discoloration of coating possible during service life

Yes; Conformal coating, Class A

## Operating systems

proprietary	Yes
pre-installed operating system	
<ul style="list-style-type: none"> <li>• Windows CE</li> </ul>	No

## Configuration

Message indicator	Yes
Alarm system (incl. buffer and acknowledgment)	Yes
Process value display (output)	Yes
Process value default (input) possible	Yes
Recipe management	Yes

## Configuration software

<ul style="list-style-type: none"> <li>• STEP 7 Basic (TIA Portal)</li> </ul>	Yes; via integrated WinCC Basic (TIA Portal)
<ul style="list-style-type: none"> <li>• STEP 7 Professional (TIA Portal)</li> </ul>	Yes; via integrated WinCC Basic (TIA Portal)
<ul style="list-style-type: none"> <li>• WinCC flexible Compact</li> </ul>	Yes
<ul style="list-style-type: none"> <li>• WinCC flexible Standard</li> </ul>	Yes
<ul style="list-style-type: none"> <li>• WinCC flexible Advanced</li> </ul>	Yes
<ul style="list-style-type: none"> <li>• WinCC Basic (TIA Portal)</li> </ul>	Yes
<ul style="list-style-type: none"> <li>• WinCC Comfort (TIA Portal)</li> </ul>	Yes
<ul style="list-style-type: none"> <li>• WinCC Advanced (TIA Portal)</li> </ul>	Yes
<ul style="list-style-type: none"> <li>• WinCC Professional (TIA Portal)</li> </ul>	Yes

## Languages

Online languages	
<ul style="list-style-type: none"> <li>• Number of online/runtime languages</li> </ul>	5
Project languages	
<ul style="list-style-type: none"> <li>• Languages per project</li> </ul>	32

## Functionality under WinCC (TIA Portal)

Libraries	Yes
Task planner	
<ul style="list-style-type: none"> <li>• time-controlled</li> </ul>	No
<ul style="list-style-type: none"> <li>• task-controlled</li> </ul>	Yes
Help system	
<ul style="list-style-type: none"> <li>• Number of characters per info text</li> </ul>	320
Message system	

• Number of alarm classes	32
• Bit messages	
— Number of bit messages	200
• Analog messages	
— Number of analog messages	15
• System messages HMI	Yes
• Number of characters per message	80
• Number of process values per message	8
• Message indicator	Yes
• Message buffer	
— Number of entries	256
— Circulating buffer	Yes
— retentive	Yes
— maintenance-free	Yes
<b>Recipe management</b>	
• Number of recipes	5
• Data records per recipe	20
• Entries per data record	20
• Size of internal recipe memory	40 kbyte
• Recipe memory expandable	No
<b>Variables</b>	
• Number of variables per device	500
• Number of variables per screen	30
• Limit values	Yes
• Multiplexing	Yes
• Structures	No
• Arrays	Yes
<b>Images</b>	
• Number of configurable images	50
• Permanent window/default	Yes
• Global image	Yes
• Image selection by PLC	Yes
• Image number in the PLC	Yes
<b>Image objects</b>	
• Number of objects per image	30
• Text fields	Yes
• I/O fields	Yes
• Graphic I/O fields (graphics list)	Yes
• Symbolic I/O fields (text list)	Yes
• Date/time fields	Yes
• Switches	Yes

• Buttons	Yes
• Graphic display	Yes
• Icons	Yes
• Geometric objects	Yes
<b>Complex image objects</b>	
• Number of complex objects per screen	5
• Alarm view	Yes
• Trend view	Yes
• User view	Yes
• Status/control	No
• Sm@rtClient view	No
• Recipe view	Yes
• f(x) trend view	No
• System diagnostics view	No
• Media Player	No
• Bar graphs	Yes
• Sliders	No
• Pointer instruments	No
• Analog/digital clock	No
<b>Lists</b>	
• Number of text lists per project	150
• Number of entries per text list	30
• Number of graphics lists per project	100
• Number of entries per graphics list	30
<b>Archiving</b>	
• Number of archives per device	0
<b>Security</b>	
• Number of user groups	50
• Number of user rights	32
• Number of users	50
• Password export/import	No
• SIMATIC Logon	No
<b>Character sets</b>	
• Keyboard fonts	
— US English	Yes
<b>Transfer (upload/download)</b>	
• MPI/PROFIBUS DP	No
• USB	No
• Ethernet	Yes
• using external storage medium	No
<b>Process coupling</b>	

- S7-1200 Yes
- S7-1500 Yes
- S7-200 Yes
- S7-300/400 Yes
- LOGO! Yes; With restrictions with regard to address area and data types  
<http://support.automation.siemens.com/WW/view/en/56348902>
- WinAC Yes
- SINUMERIK No
- SIMOTION No
- Allen Bradley (EtherNet/IP) Yes
- Allen Bradley (DF1) No
- Mitsubishi (MC TCP/IP) Yes
- Mitsubishi (FX) No
- OMRON (FINS TCP) No
- OMRON (LINK/Multilink) No
- Modicon (Modbus TCP/IP) Yes
- Modicon (Modbus) No

Service tools/configuration aids	
• Backup/Restore manually	Yes
• Backup/Restore automatically	No
• Simulation	Yes
• Device switchover	Yes

Peripherals/Options	
Printer	No
SIMATIC HMI MM memory card: Multi Media Card	No
SIMATIC HMI SD memory card: Secure Digital memory card	No
USB memory	No

Mechanics/material	
Enclosure material (front)	
• Plastic	Yes
• Aluminum	No
• Stainless steel	No

Dimensions	
Width of the housing front	214 mm
Height of housing front	158 mm
Mounting cutout, width	197 mm
Mounting cutout, height	141 mm
Overall depth	44 mm

Weights	
Weight without packaging	1.07 kg



---

Weight incl. packaging

1.32 kg

**last modified:**

11/25/2019