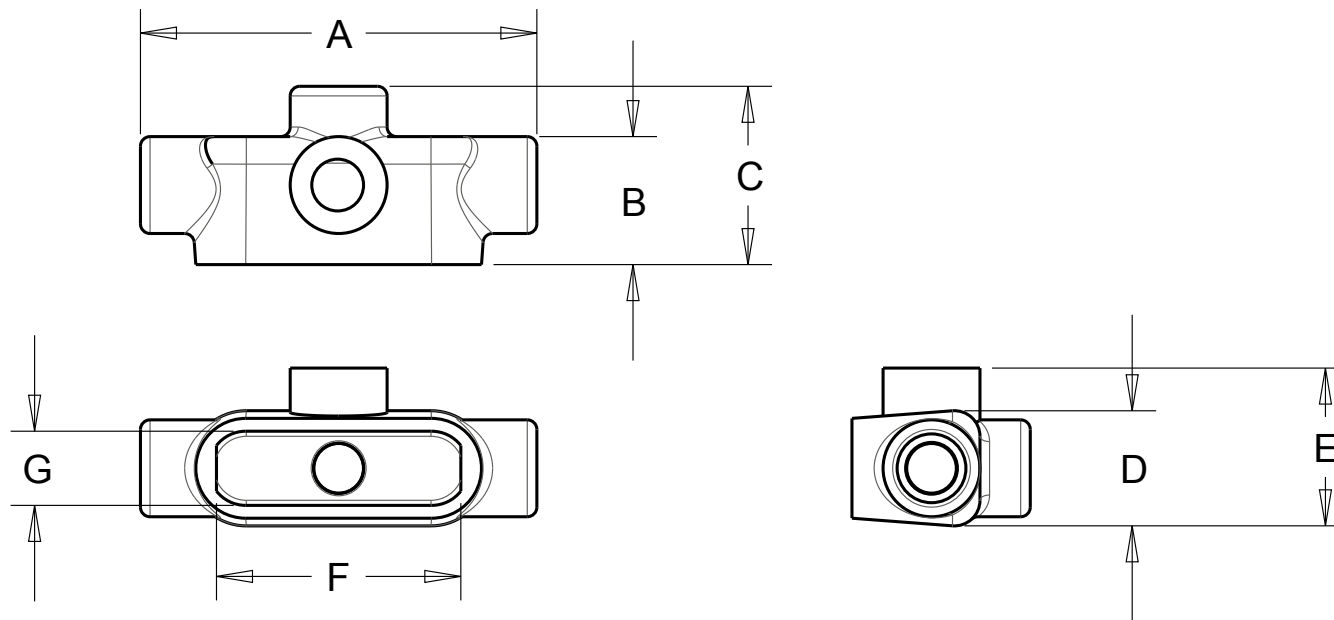


T&B Conduit Bodies

NOTES:

1. ALL CONDUIT BODIES MADE FROM CLASS 30 GREY IRON
2. ALL CONDUIT BODIES ARE ZINC ELECTRO-PLATED WITH ALUMINUM ACRYLIC PAINT INSIDE AND OUTSIDE
3. ALL DIMENSIONS +/- 1/64".
4. CAST COVERS FURNISHED ZINC ELECTRO-PLATED WITH ALUMINUM ACRYLIC PAINT.
5. STAMPED STEEL COVERS FURNISHED ZINC ELECTRO-PLATED WITH CLEAR CHROMATE FINISH.
6. ALL CONDUIT BODIES AND COVERS ARE INTERCHANGABLE WITH CROUSE HINDS, APPLETON, AND O.Z. GEDNEY BRAND FORM 7 CONDUIT BODIES.

TA	A	B	C	D	E	F	G
1/2	5.57	1.80	2.57	1.62	2.34	3.19	.94
3/4	6.19	2.00	2.79	1.80	2.58	3.82	1.13
1	7.35	2.23	3.07	2.29	3.10	4.55	1.35
1 1/4	7.30	2.32	3.18	2.20	3.06	5.03	1.80
1 1/2	8.57	2.58	3.89	2.45	3.77	5.44	2.05
2	9.48	3.20	4.43	3.06	4.26	6.41	2.44



www.tnb.com

REVISIONS	GENERAL NOTES	DESCRIPTION: FORM 7 CONDUIT BODIES BLUEKOTE TA STYLE			Thomas & Betts A Member of the ABB Group
0 SEE ERN (****) FOR APPROVAL SIGNATURES & RELEASE DATE. PROJECT NO: ****	1. ALL DIMENSIONS ARE FOR REFERENCE ONLY. 2. DIMENSIONS IN BRACKETS [] ARE IN METRIC UNITS.	ORIGINAL PROJECT NO / (ERN NO) 013D000116 / (2017299)	SHEET NO: 1 OF 1	REV. NO: 0	DRAWING NO: WSD-001669

THIS DRAWING IS INTENDED FOR DESCRIPTIVE PURPOSES ONLY. AND THE RIGHT IS RESERVED TO DEVIATE FROM ANY OF THE DETAILS SHOWN HEREON.
COPYRIGHT ABB GROUP. ALL RIGHTS RESERVED. PROPRIETARY AND CONFIDENTIAL.