

RCCB, 2-pole, type A, In: 16 A, 30 mA, Un AC: 230 V



Model	
product brandname	SENTRON
Product designation	RCCB
Design of the product	Instantaneous
General technical data	
Number of poles	2
Size of installation devices / acc. to DIN 43880	1
Protection against electrical shock	Finger and back-of-hand safe
Short-circuit current rating	10 kA
circuit-breaker / Design	5SV3
Mechanical service life (switching cycles) / typical	10 000
Overvoltage category	III
Supply voltage	
Supply voltage	
<ul style="list-style-type: none"> at AC / rated value 	230 V
<ul style="list-style-type: none"> for testing equipment / minimum 	195 V
Supply voltage frequency	
<ul style="list-style-type: none"> rated value 	50 Hz

Protection class	
Protection class IP	IP20, if the distribution board is installed, with connected conductors
Switching capacity	
Switching capacity current / according to IEC 61008-1 / rated value	0.5 kA
Dissipation	
Power loss [W]	
<ul style="list-style-type: none"> for rated value of the current / at AC / in hot operating state / per pole 	0.4 W
<ul style="list-style-type: none"> maximum 	0.6 W
Electricity	
Tripping residual current / rated value	30 mA
rated current I_n / IEC, DIN/VDE / at 40 Cel	16 A
Type of fault current	A
Current / at AC / rated value	16 A
I^2t-value / permissible	15 620 A ² ·s
Surge current resistance / rated value	1 kA
Product details	
Product feature / silicon-free	Yes
Product extension / can be installed / supplementary devices	Yes
Number	
Number of test cycles / for environmental testing / acc. to IEC 60068-2-30	28
Connections	
Connectable conductor cross-section / stranded	
<ul style="list-style-type: none"> minimum 	0.75 mm ²
<ul style="list-style-type: none"> maximum 	35 mm ²
Connectable conductor cross-section / solid	
<ul style="list-style-type: none"> minimum 	0.75 mm ²
<ul style="list-style-type: none"> maximum 	35 mm ²
Tightening torque / with screw-type terminals	
<ul style="list-style-type: none"> minimum 	2.5 N·m
<ul style="list-style-type: none"> maximum 	3 N·m
Position / of power supply cord	top or bottom
Mechanical Design	
Height	90 mm
Width	36 mm
Depth	70 mm
Mounting position	any

Installation depth	70 mm
Number of width units	2
Mounting type	DIN rail (REG)
Net weight	204 g

Environmental conditions

Ambient temperature

- | | |
|--|--------|
| • minimum | -25 °C |
| • maximum | 45 °C |
| • during storage / minimum permissible | -40 °C |
| • during storage / maximum permissible | 75 °C |

Certificates

Equipment marking

- | | |
|--------------------------|---|
| • acc. to DIN EN 61346-2 | F |
| • acc. to DIN EN 81346-2 | F |

General Product Approval

Declaration of Conformity



[sonstig](#)



Further information

Information- and Downloadcenter (Catalogs, Brochures,...)

<http://www.siemens.com/lowvoltage/catalogs>

Industry Mall (Online ordering system)

<https://mall.industry.siemens.com/mall/en/en/Catalog/product?mlfb=5SV3311-6>

Service&Support (Manuals, Certificates, Characteristics, FAQs,...)

<http://support.automation.siemens.com/WW/view/en/5SV3311-6/all>

Image database (product images, 2D dimension drawings, 3D models, device circuit diagrams, ...)

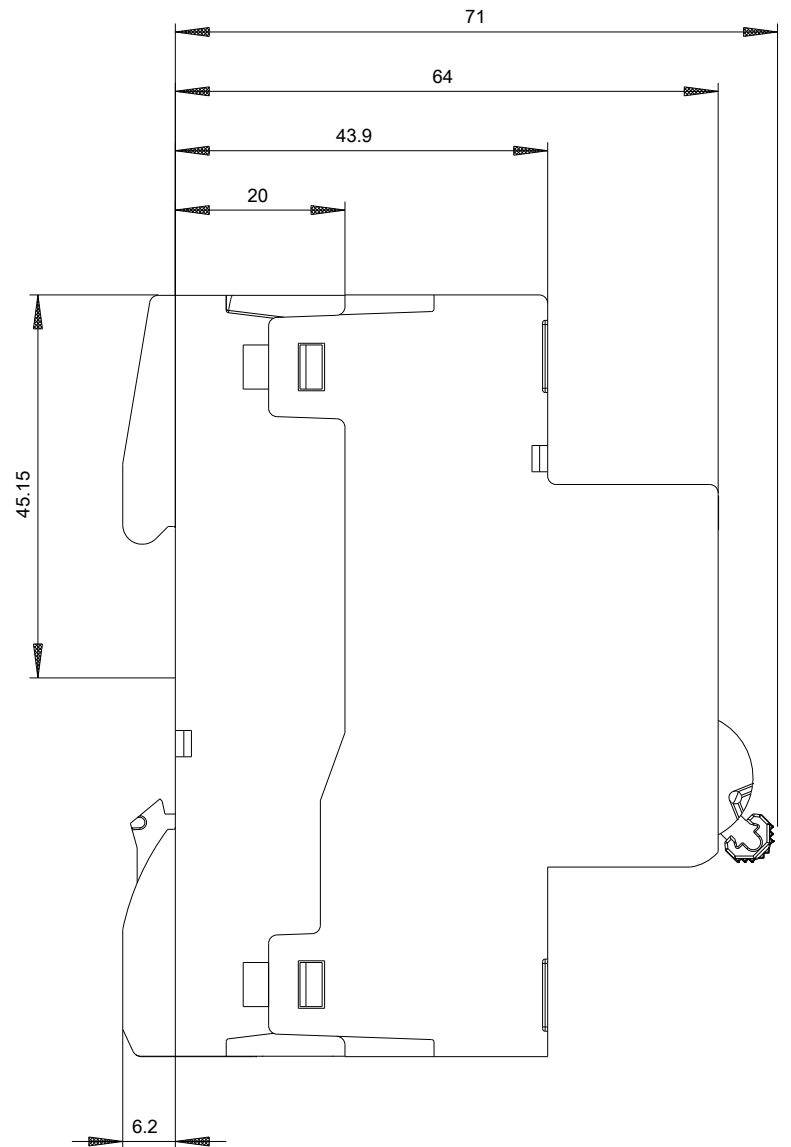
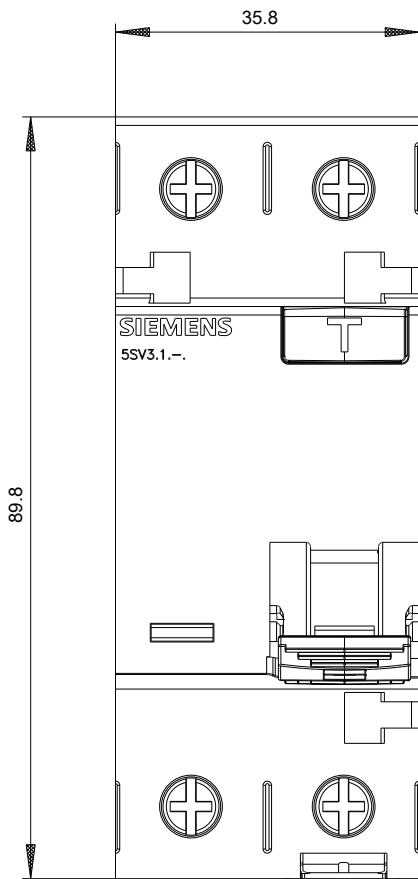
http://www.automation.siemens.com/bilddb/cax_en.aspx?mlfb=5SV3311-6

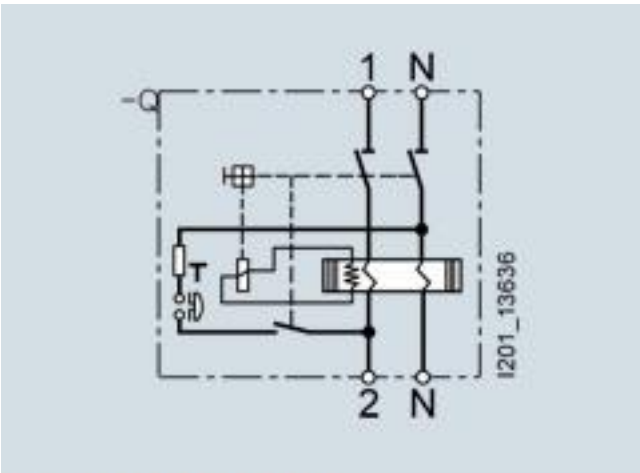
CAX-Online-Generator

<http://www.siemens.com/cax>

Tender specifications

<http://www.siemens.com/specifications>





Internal circuit diagram IEC