

---

 TECHNICAL DATA SHEET

# Cable Tie, detectable

## NDT and PDT series

**Ty-Rap®**




---

**Features:**

- Detectable by metal detectors, X-ray equipment and visual detection
- Specially formulated high metallic density
- Engineered metallic content is formulated for higher detection
- 316 stainless steel barb is corrosion resistant and helps provide greater longevity

---

**Typical applications:**

- Food and beverage processing
- Pharmaceutical production
- Chemical and compounds manufacturing
- Tobacco processing
- Tire and airbag manufacturing
- Any other industry sensitive to contamination and using detection equipment

Cable ties are primarily used to cinch wires and cables together to form a neat and organized bundle.

**Certifications / Standards:**


**3-Part Specification: 26 05 84**

**End User Tools**


---

**Materials & Finishes**

- NDT: Nylon
- PDT: Chemical-resistant polypropylene
- Colors: blue, brown and natural (gray)

---

**Ratings:**

- Minimum installation temperature: -20°C (-4°F)
- Minimum operating temperature: -40°C (-40°F)
- Maximum operating temperature: 85°C (185°F)

---

**Flammability:**

- UL94 HB

**Cable ties, detectable:  
NDT and PDT series**

Product selection													
Part no:	Figure	Max. bundle diameter	Tensile strength	A in. (mm)	B in. (mm)	C in. (mm)	D in. (mm)	E in. (mm)					
TY523M-NDT	1	0.78 (20)	18 (80)	3.6 (92)	0.09 (2.3)	0.15 (3.9)	0.19 (4.7)	0.035 (0.9)					
TY523M-1-NDT													
TY523M-9-NDT													
TY523M-PDT			11 (50)										
TY523M-1-PDT													
TY523M-9-PDT													
TY524M-NDT	1.38 (35)	40 (180)	5.3 (137)	0.14 (3.6)	0.18 (4.6)	0.25 (6.4)	0.043 (1.1)						
TY524M-1-NDT													
TY524M-9-NDT													
TY525M-NDT	1.73 (44)	50 (222)						7.2 (181)	0.18 (4.6)	0.22 (5.6)	0.32 (8.1)	0.047 (1.2)	
TY525M-1-NDT													
TY525M-9-NDT													
TY525M-PDT		30 (135)											
TY525M-1-PDT													
TY525M-9-PDT													
TY5253M-NDT	3.0 (76)	50 (222)	11.4 (289)	0.19 (4.7)	0.21 (5.3)	0.31 (7.8)							
TY5253M-1-NDT													
TY5253M-9-NDT													
TY5253M-PDT		30 (135)											
TY5253M-1-PDT													
TY5253M-9-PDT													
TY527M-NDT	2	3.50 (88.9)	120 (534)	13.5 (343)	0.27 (6.9)	0.32 [8.1]	0.48 (12.2)	0.06 (1.5)					
TY527M-1-NDT													
TY527M-9-NDT													
TY527M-PDT			60 (267)										
TY527M-1-PDT													
TY527M-9-PDT													
TY528M-NDT	4.00 (101)	50 (222)	14.2 (361)	0.18 (4.7)	0.22 (5.5)	0.32 (8.2)	0.047 (1.2)						
TY528M-1-NDT													
TY528M-9-NDT													
TY528M-PDT		30 (135)											
TY528M-1-PDT													
TY528M-9-PDT													

Note: Product must be installed in accordance with applicable national and local electrical codes.

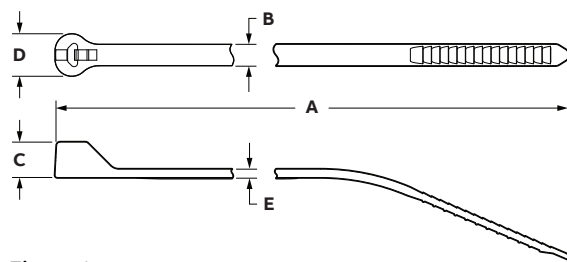


Figure 1

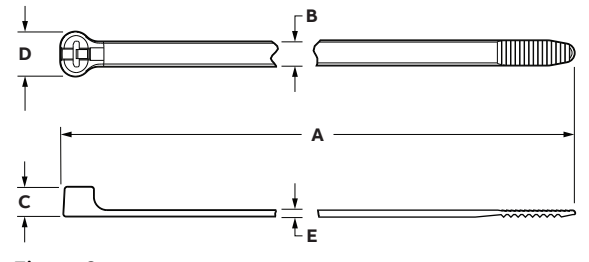


Figure 2