

30mm Command/52, Chrome Finish Heavy Duty, Watertight/Oiltight Complete Metal Unit Illuminated Twist-to-Release Full Voltage, 120V AC/DC LED Lamp Mushroom Head Cap Small 1.79" (45 mm) Plastic Cap, Red 2 Position Maintained, Twist-to-Release with 1 N.O. - 1 N.C. Heavy Duty Contacts, A600/P600 UL Listed, CSA Certified NEMA 1,3,3R,4,4X,12,13 & Automotive Standards

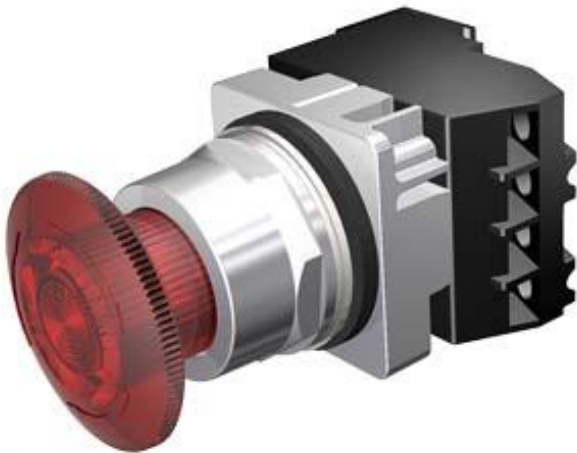


Figure similar

Enclosure	
Number of command points	1
Delivery state	No
• as a kit	
Actuator	
Product extension optional Light source	Yes
Material of the actuating element	plastic
Number of contact modules	1
Type of unlocking device	rotate-to-unlatch mechanism
Number of switching positions	2
Front ring	
Product component front ring	Yes
Design of the front ring	standard
Material of the front ring	metal
Holder	
Material of the holder	metal

Contact block/ lampholder	
Number of lampholders	1
Display	
Number of LED modules	1
General technical data	
<b>Product function</b>	
• positive opening	Yes
<b>Product component</b>	
• lamp transformer	No
• Light source	Yes
<b>Type of voltage</b>	
• of the operating voltage	AC/DC
• of the input voltage	AC/DC
<b>Surge voltage resistance rated value</b>	4 kV
<b>Protection class IP</b>	IP66
• of the terminal	IP20
<b>Thermal current</b>	10 A
Supply voltage	
<b>Type of voltage of the supply voltage</b>	
• of the light source	AC/DC
<b>Supply voltage of the light source at AC</b>	
• at 60 Hz rated value	120 V
<b>Supply voltage of the light source at DC</b>	
• rated value	120 V
Auxiliary circuit	
<b>Number of NC contacts for auxiliary contacts</b>	1
<b>Number of NO contacts for auxiliary contacts</b>	1
<b>Operating current at AC-15</b>	
• at 110 V rated value	60 A
• at 230 V rated value	30 A
• at 400 V rated value	15 A
• at 500 V rated value	12 A
Connections/Terminals	
<b>Type of electrical connection</b>	screw-type terminals
<b>Tightening torque of the screws in the bracket</b>	20 N·m
<b>Tightening torque [lbf·in]</b>	
• with screw-type terminals	8 ... 8 lbf·in
Lamp	
<b>Color of the light source</b>	red

## Ambient conditions

### Ambient temperature

- during operation -35 ... +70 °C
- during storage -40 ... +85 °C

## Installation/ mounting/ dimensions

**Shape of the installation opening** round

## Certificates/approvals

## Further information

### Information- and Downloadcenter (Catalogs, Brochures,...)

<http://www.siemens.com/industrial-controls/catalogs>

### Industry Mall (Online ordering system)

<https://mall.industry.siemens.com/mall/en/en/Catalog/product?mlfb=US2:52PR8ERAB>

### Cax online generator

<http://support.automation.siemens.com/WW/CAXorder/default.aspx?lang=en&mlfb=US2:52PR8ERAB>

### Service&Support (Manuals, Certificates, Characteristics, FAQs,...)

<https://support.industry.siemens.com/cs/ww/en/ps/US2:52PR8ERAB>

### Image database (product images, 2D dimension drawings, 3D models, device circuit diagrams, EPLAN macros, ...)

[http://www.automation.siemens.com/bilddb/cax\\_de.aspx?mlfb=US2:52PR8ERAB&lang=en](http://www.automation.siemens.com/bilddb/cax_de.aspx?mlfb=US2:52PR8ERAB&lang=en)

last modified:

05/08/2019