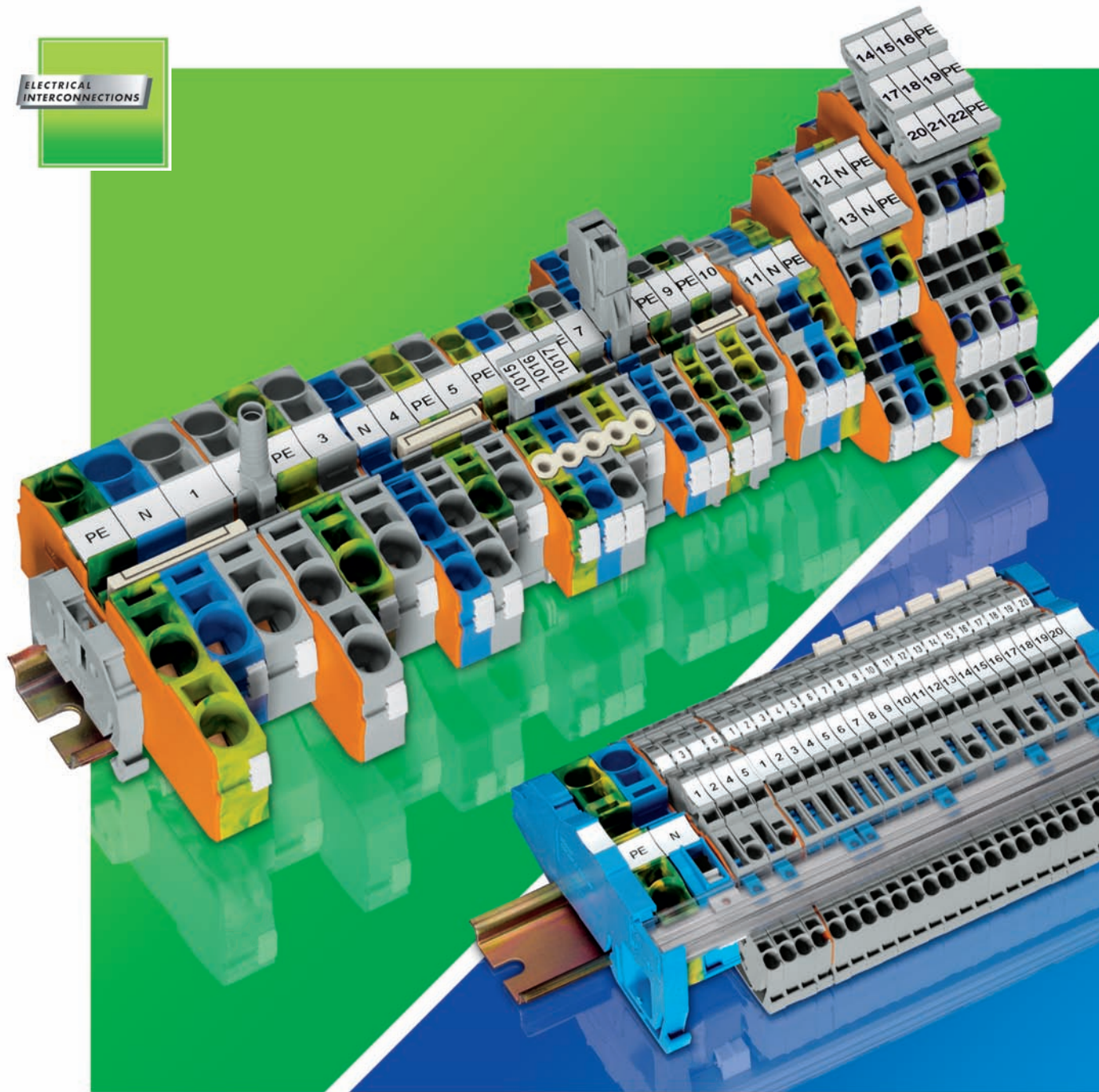


ELECTRICAL
INTERCONNECTIONS

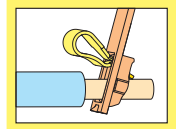


[TOPJOB[®]S]

- **The** range of rail-mounted terminal blocks for a perfect electrical installation.

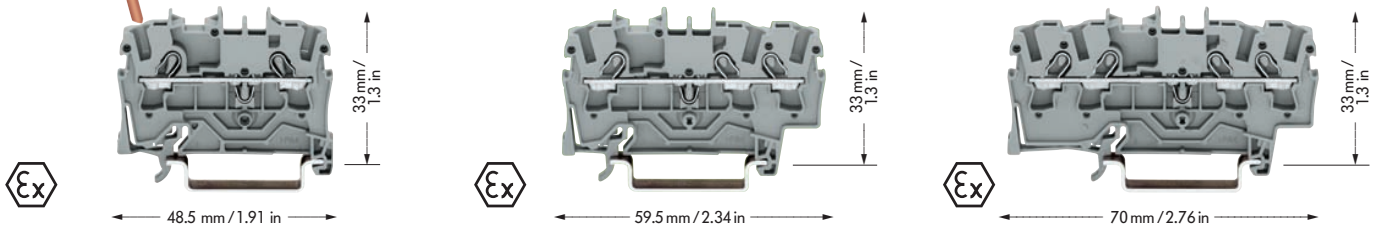
WAGO[®]
INNOVATIVE CONNECTIONS

TOPJOB® Rail-Mounted Terminal Blocks 2.5 (4) mm²/AWG 12 Series 2002



| | | | | | |
|---------------------------------------------------------------------------------------------------------------------------------------|--------------------------------------------------|---------------------------------------------------------------------------------------------------------------------------------------|--------------------------------------------------|---------------------------------------------------------------------------------------------------------------------------------------|--------------------------------------------------|
| 0.25 – 2.5 (4) mm² ① 800 V/8 kV/3 24 A Terminal block width 5.2 mm / 0.205 in 10 – 12 mm / 0.43 in * | AWG 22 – 12 600 V, 20 A 600 V, 20 A | 0.25 – 2.5 (4) mm² ① 800 V/8 kV/3 24 A Terminal block width 5.2 mm / 0.205 in 10 – 12 mm / 0.43 in * | AWG 22 – 12 600 V, 20 A 600 V, 20 A | 0.25 – 2.5 (4) mm² ① 800 V/8 kV/3 24 A Terminal block width 5.2 mm / 0.205 in 10 – 12 mm / 0.43 in * | AWG 22 – 12 600 V, 20 A 600 V, 20 A |
|---------------------------------------------------------------------------------------------------------------------------------------|--------------------------------------------------|---------------------------------------------------------------------------------------------------------------------------------------|--------------------------------------------------|---------------------------------------------------------------------------------------------------------------------------------------|--------------------------------------------------|

① can be connected: 0.25 mm² – 4 mm² "s + f-st";
 can be pushed in directly: 0.75 mm² – 4 mm² "s" and 0.75 mm² – 2.5 mm² "insulated ferrule, 12 mm"



| Item No. | Pack.-unit pcs | Item No. | Pack.-unit pcs | Item No. | Pack.-unit pcs |
|--------------------------------------------------|------------------|--------------------------------------------------|----------------|--------------------------------------------------|----------------|
| 2-conductor through terminal blocks | | 3-conductor through terminal blocks | | 4-conductor through terminal blocks | |
| grey | 2002-1201 | 100 | grey | 2002-1301 | 100 |
| blue | 2002-1204 | 100 | blue | 2002-1304 | 100 |
| orange | 2002-1202 | 100 | orange | 2002-1302 | 100 |
| more colors are being prepared | | more colors are being prepared | | more colors are being prepared | |
| 2-conductor ground (earth) terminal block | | 3-conductor ground (earth) terminal block | | 4-conductor ground (earth) terminal block | |
| green-yellow | 2002-1207 | 100 | green-yellow | 2002-1307 | 100 |
| Suitable for Ex e II applications 550 V, 22 A | | Suitable for Ex e II applications 550 V, 22 A | | Suitable for Ex e II applications 550 V, 22 A | |
| Suitable for Ex i applications | | Suitable for Ex i applications | | Suitable for Ex i applications | |

Accessories

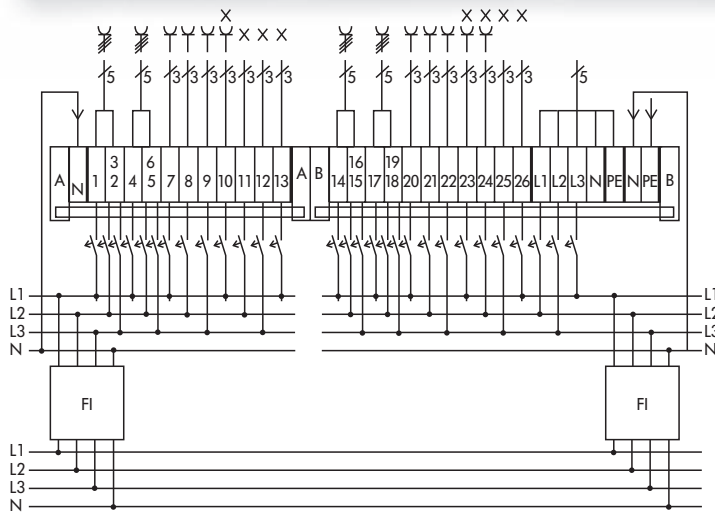
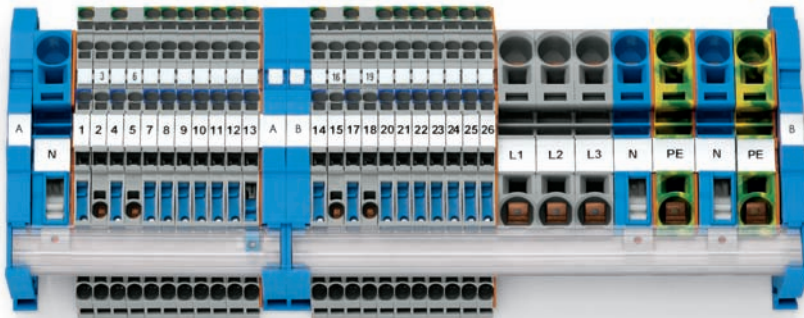
appropriate marker system **WMB/Marker strips** (see pages 38 to 39)

| | | |
|---------------------------------------------------------------------------------------------------------------------------------------------------------------------------------------------------------------------------------------------------------|---------------------------------------------------------------------------------------------------------------------------------------------------------------------------------------------------------------------------------------------------------|---------------------------------------------------------------------------------------------------------------------------------------------------------------------------------------------------------------------------------------------------------|
| End and intermediate plate, 0.8 mm / 0.031 in thick orange 2002-1292 100 (4 x 25) grey 2002-1291 100 (4 x 25) | End and intermediate plate, 0.8 mm / 0.031 in thick orange 2002-1392 100 (4 x 25) grey 2002-1391 100 (4 x 25) | End and intermediate plate, 0.8 mm / 0.031 in thick orange 2002-1492 100 (4 x 25) grey 2002-1491 100 (4 x 25) |
| Insulation stop, 5 pcs/strip 200 strips light grey 2002-171 0.25-0.5 mm ² dark grey 2002-172 0.75-1 mm ² | Insulation stop, 5 pcs/strip 200 strips light grey 2002-171 0.25-0.5 mm ² dark grey 2002-172 0.75-1 mm ² | Insulation stop, 5 pcs/strip 200 strips light grey 2002-171 0.25-0.5 mm ² dark grey 2002-172 0.75-1 mm ² |
| Push-in type jumper bars, light grey, insulated, I _N 25 A 20 A 2-way 2002-402 200 (8 x 25) 3-way 2002-403 200 (8 x 25) 4-way 2002-404 200 (8 x 25) : : 10-way 2002-410 100 (4 x 25) | Push-in type jumper bars, light grey, insulated, I _N 25 A 20 A 2-way 2002-402 200 (8 x 25) 3-way 2002-403 200 (8 x 25) 4-way 2002-404 200 (8 x 25) : : 10-way 2002-410 100 (4 x 25) | Push-in type jumper bars, light grey, insulated, I _N 25 A 20 A 2-way 2002-402 200 (8 x 25) 3-way 2002-403 200 (8 x 25) 4-way 2002-404 200 (8 x 25) : : 10-way 2002-410 100 (4 x 25) |
| Staggered jumper, see page 28 | Staggered jumper, see page 28 | Staggered jumper, see page 28 |
| Push-in type jumper bars, light grey, insulated, I _N 25 A 20 A 1 - 3 2002-433 200 (8 x 25) 1 - 4 2002-434 200 (8 x 25) 1 - 5 2002-435 100 (4 x 25) : : 1 - 10 2002-440 100 (4 x 25) | Push-in type jumper bars, light grey, insulated, I _N 25 A 20 A 1 - 3 2002-433 200 (8 x 25) 1 - 4 2002-434 200 (8 x 25) 1 - 5 2002-435 100 (4 x 25) : : 1 - 10 2002-440 100 (4 x 25) | Push-in type jumper bars, light grey, insulated, I _N 25 A 20 A 1 - 3 2002-433 200 (8 x 25) 1 - 4 2002-434 200 (8 x 25) 1 - 5 2002-435 100 (4 x 25) : : 1 - 10 2002-440 100 (4 x 25) |
| Protective warning marker, for 5 terminal blocks yellow 2002-115 100 (4 x 25) | Protective warning marker, for 5 terminal blocks yellow 2002-115 100 (4 x 25) | Protective warning marker, for 5 terminal blocks yellow 2002-115 100 (4 x 25) |
| Modular TOPJOB®S connector**, for jumper contact slot 1 pole 2002-511 100 (4 x 25) | Modular TOPJOB®S connector**, for jumper contact slot 1 pole 2002-511 100 (4 x 25) | Modular TOPJOB®S connector**, for jumper contact slot 1 pole 2002-511 100 (4 x 25) |
| Spacer, modular 2002-549 100 (4 x 25) see also pages 24 to 25 | Spacer, modular 2002-549 100 (4 x 25) see also pages 24 to 25 | Spacer, modular 2002-549 100 (4 x 25) see also pages 24 to 25 |
| Test plug adapter, for test plug 4 mm / 0.157 in Ø 2009-174 100 (4 x 25) Testing tap, for max. 2.5 mm² 2009-182 100 (4 x 25) | Test plug adapter, for test plug 4 mm / 0.157 in Ø 2009-174 100 (4 x 25) Testing tap, for max. 2.5 mm² 2009-182 100 (4 x 25) | Test plug adapter, for test plug 4 mm / 0.157 in Ø 2009-174 100 (4 x 25) Testing tap, for max. 2.5 mm² 2009-182 100 (4 x 25) |

* For further approvals with corresponding ratings see page 49.

Examples of Circuit Configuration for WAGO TOPJOB® S

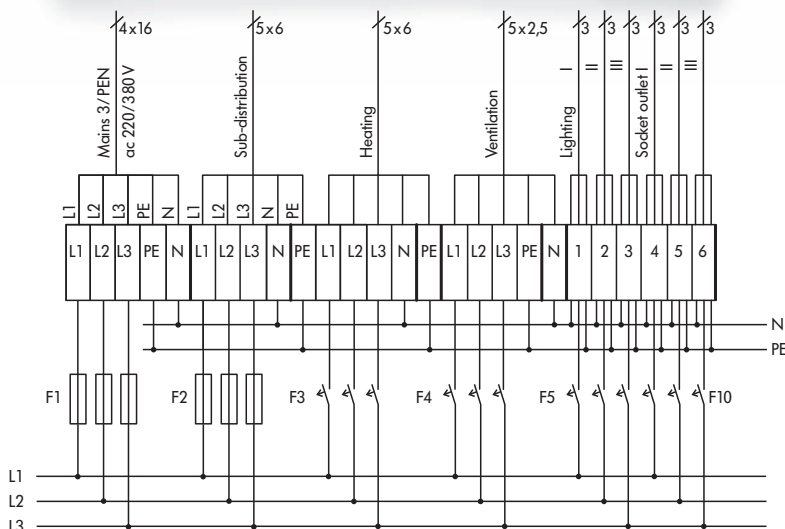
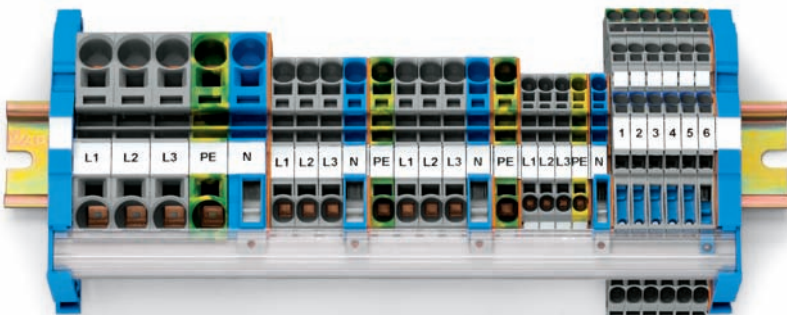
Distribution using multilevel installation terminal block (Series 2003), for three-phase and single phase a.c. with 2 residual current breakers



Parts list

- 18 x 2003-7641 NT/L/PE
- 4 x 2003-7642 L/L
- 2 x 2003-7692 End plate
- 3 x 2016-1201 L
- 2 x 2016-1207 PE
- 3 x 2016-7114 NT
- 2 x 2016-7192 End plate
- 2 x 2016-1292 End plate
- 4 x 2009-305 Busbar carrier with end stop function
- 1 x 210-133 N-busbar
- 1 x 777-303 Transparent cover
- 1 x 2009-110 Marker strips
- 1 x 248-501 Mini-WSB
- 1 x 248-502 Mini-WSB

Supply of the TN-S system (mains) using the Series 2002, 2003, 2006 and 2016



Parts list

- 6 x 2003-7641 NT/L/PE
- 1 x 2003-7692 End plate
- 3 x 2002-1201 L
- 1 x 2002-1207 PE
- 1 x 2002-7114 NT
- 1 x 2002-1292 End plate
- 1 x 2002-7192 End plate
- 6 x 2006-1201 L
- 2 x 2006-1207 PE
- 1 x 2006-1292 End plate
- 2 x 2006-7114 NT
- 2 x 2006-7192 End plate
- 3 x 2016-1201 L
- 1 x 2016-1207 PE
- 1 x 2016-7114 NT
- 1 x 2016-7192 End plate
- 2 x 2009-305 Busbar carrier with end stop function
- 1 x 210-133 N-busbar
- 1 x 777-303 Transparent cover
- 1 x 2009-110 Marker strips

