



Carling Technologies®  
/// NOW PART OF



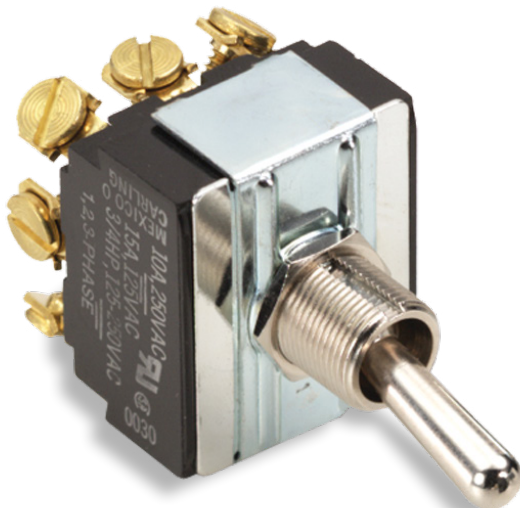
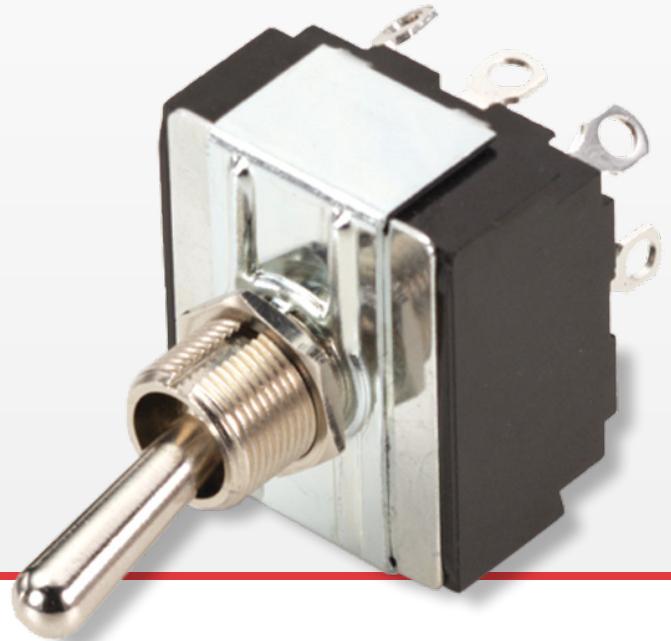
Littelfuse®

# H/I-Series

Toggle Switches

**PRODUCT WEBPAGE**

*request sample, configure part*



General purpose workhorses with options tailored to meet most any need. Ratings to 17A 125VAC, various actuator, bushing, termination, and circuit choices allow this toggle to easily integrate into a variety of different applications. The H/I-Series is appropriate for usage in low voltage DC applications.

**3-4**  
Poles

**3-17**  
Amps

**125, 250, 600**  
VAC

**12-24**  
VDC

## Typical Applications

- Marine
- Food Service
- Generator
- Industrial Control
- Office Automation

# Tech Specs

## Dielectric Strength

UL/CSA: 1000V - live to dead  
metal parts

## Electrical Life

50,000 cycles - maintained  
25,000 cycles - momentary

## Operating Temperature

32°F to 185°F (0° to 85°C)

# Ordering Scheme

Sample  
Part Number

H K 25 1 - 73

Selection

1

2

3

4

5

### 1. SERIES

H

### 2. CIRCUIT

#### Three Pole

K ON-NONE-OFF  
L ON-NONE-ON  
M ON-OFF-ON  
O ON-OFF-ON

#### Three Pole (In Four Pole Base)

A ON-NONE-OFF  
B ON-NONE-ON  
S ON-OFF-ON

### 3. RATING

25 10A 250 VAC  
15A 125 VAC  
3/4HP 250 VAC  
1, 2 or 3-Phase  
26 3A 250 VAC  
6A 125 VAC  
1/4HP 12-250 VAC  
1, 2 or 3-Phase  
27 12A 250 VAC  
17A 125 VAC  
1-1/2HP 250 VAC  
1, 2, 3-Phase

A25 6A 600VAC,  
10A 250 VAC,  
15A 125 VAC,  
3/4HP 250 VAC,  
1, 2, 3-Phase,  
1 HP 480-600VAC; 3 Phase  
A27 6A 600 VAC,  
12A 250 VAC,  
17A 125 VAC,  
2 HP 480-600 VAC; 3 Phase

### 4. TERMINATION/FUNCTION 1, 4

| Function       | Solder Lug | .250 Tab (QC) | .205 Tab (QC) | .187 Tab (QC) | Screw Term. | Wire Lead | PC Term. |
|----------------|------------|---------------|---------------|---------------|-------------|-----------|----------|
| ON-NONE-OFF    | 0          | 1             | 2             | 3             | 4           | 5         | 6        |
| (ON)-NONE-OFF  | A          | B             | C             | D             | E           | F         | G        |
| ON-NONE-(OFF)  | L          | M             | Q             | R             | S           | T         | U        |
| ON-NONE-ON     | 0          | 1             | 2             | 3             | 4           | 5         | 6        |
| ON-NONE-(ON)   | A          | B             | C             | D             | E           | F         | G        |
| ON-OFF-ON      | 0          | 1             | 2             | 3             | 4           | 5         | 6        |
| ON-NONE-(ON)   | A          | B             | C             | D             | E           | F         | G        |
| (ON)-NONE-(ON) | L          | M             | Q             | R             | S           | T         | U        |

### 4. TERMINATION/FUNCTION 8

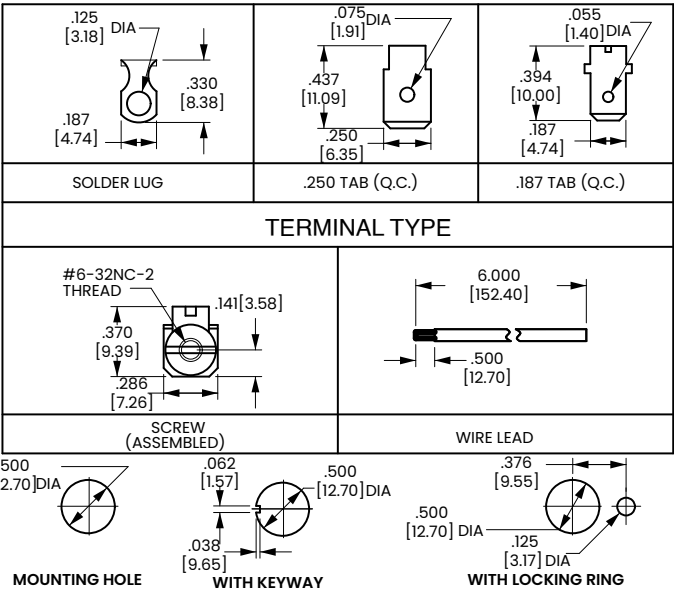
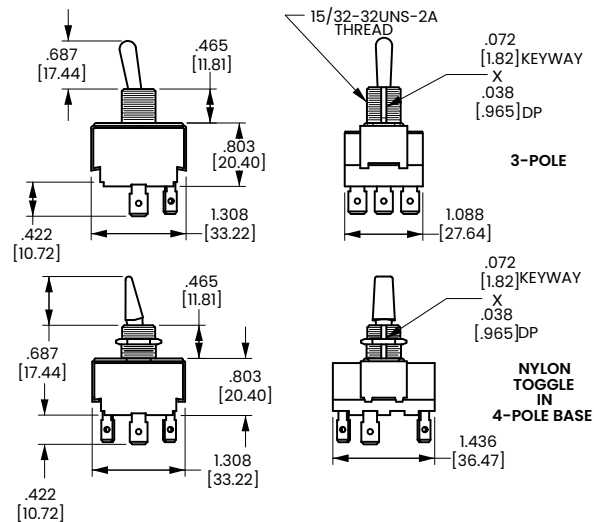
| Bat Style Toggle | Toggle with Neoprene Seal | Toggle Length | Bushing Length |
|------------------|---------------------------|---------------|----------------|
| 73               | 78                        | .687          | .465           |
| NBL3             | NBL8                      | .687          | .465           |
| NWH3             | NWD8                      | .687          | .465           |
| NRD3             | NRD8                      | .687          | .465           |

#### Notes:

- Standard Wire lead Length is 6" for other wire lead length, Use Wire length lead Termination/Function code and Add "/" and the wire lead length required at the end of the part number. Example: HK255-73/10"
- Hardware/Packaging Options may be added to the base part number by adding a "/" with the option at the end of the part number. Example: HL251-73 / HDW ASSM  
Available options include:  
2 Hex 2 Hex nuts (1 assembled on switch, 1 Supplied in bulk)  
No Hardware No Hardware included  
HDW ASSM With Hardware assembled  
HDW bulk With Hardware bulk  
Poly With Polybag
- The nbl toggle uses a black oxide plated metal bushing. NWN and NRD toggles uses a nickle plated metal bushing. NBL, NWH, and NRD toggles use a four pole base with pole 3 empty.
- () indicates momentary function.
- Maintained or Momentary action of the switch is determined by the combination of the circuit and termination/function designation of the description. Example: HK25B-73 is a (ON)-OFF circuit with .250 TAB Terminals.
- Screw terminals are supplied with screws assembled to terminals.
- Nylon toggles are not available with momentary circuits.
- The "O" circuit is a reversing circuit with jumpers from terminals 1 to 6, 3 to 4 and Terminal 7 to 9.
- A Specials "O" circuit is a reversing circuit called out with a "J" Following the termination/function digit in the description. Jumpers are from terminal 1 to 5, 3 to 5, 4 to 9 and 6 to 7.
- Special "O" circuit only available with .250 TAB terminals. Example: H0251J-73

# Dimensional Specs

inches [millimeters]



## Authorized Sales Representatives and Distributors

Click on a region of the map below to find your local representatives and distributors or visit [www.carlingtech.com/findarep](http://www.carlingtech.com/findarep).



## About Carling

Founded in 1920, Carling Technologies is a leading manufacturer of electrical and electronic switches and assemblies, circuit breakers, electronic controls, power distribution units, and multiplexed power distribution systems. With six ISO9001 and IATF16949 registered manufacturing facilities and technical sales offices worldwide, Carling Technologies Sales, Service and Engineering teams do much more than manufacture electrical components, they engineer powerful solutions! To learn more about Carling please visit [www.carlingtech.com/company-profile](http://www.carlingtech.com/company-profile).

To view all of Carling's environmental, quality, health & safety certifications please visit [www.carlingtech.com/environmental-certifications](http://www.carlingtech.com/environmental-certifications).