



# Dialight® LED Reliant™ High Bay - UL

## Technical Specification Sheet - Americas

## Reliant™ LED High Bay

100-277 VAC, 347-480 VAC



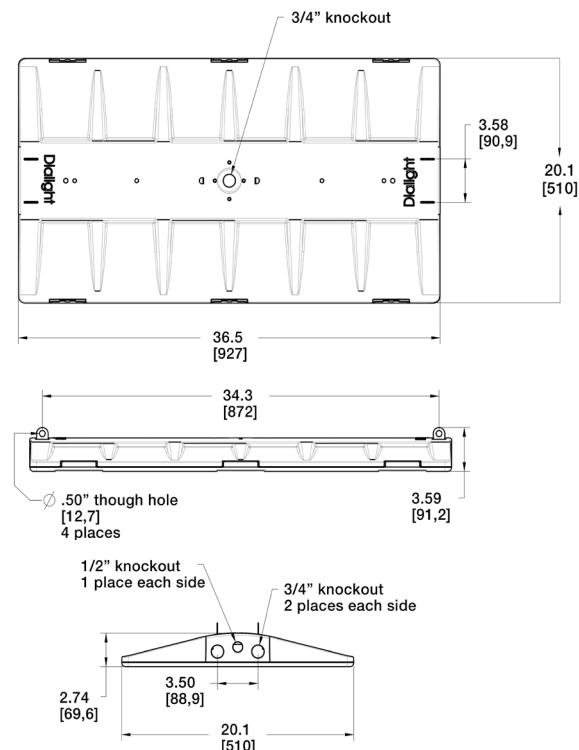
### Certifications & Ratings

- UL 1598
- UL 8750
- CSA C22.2 No. 250.0
- Damp location
- L90 rated for >100,000 hours @ 25°C
- DLC Standard & Premium\*
- Title 24 compliant

### Features & Benefits

- 10 year warranty
- Up to 160 lm/W
- 10% up-light accessory available (most models)
- Modular configuration
- Field replaceable parts available
- Controls enabled

\*Awaiting validation or certification



Dimensions in inches [mm]

**WARNING - INSTALLATION & SECONDARY RETENTION.** Use of any Dialight products without proper installation (including secondary retention / netting) and periodic inspections could cause severe injury or death. Dialight recommends that all installations should use secondary retention / netting (appropriate to the installation environment) where applicable. It is the exclusive responsibility of the contractor, installer and/or end-user to: (a) determine the suitability of the product for its intended application; and, (b) ensure that the product is safely installed (with secondary retention / netting where appropriate) and in compliance with all applicable laws and regulations. To the extent permissible under applicable laws, Dialight disclaims all liability for personal injury and/or other damage resulting from any dislodgment or other dislocation of its products.

### Mechanical Information:

#### Fixture weight:

Single unit: 18 lb\* (polycarbonate, 120 VAC version)  
 Tandem unit: 41 lb\* (polycarbonate, 120 VAC version)

\*Base models only - does not include add on accessories (surge, battery backup, sensor) - estimated additional 3 lb

#### Mounting:

**Mounting:** Cable/chain  
 Pendant mount kit available (see mounting accessories section on page 11)

**Mounting tabs:** 2 per side

**Cable entries:** 3/4" knockout - 2 per side, 1 top  
 1/2" knockout - 1 per side

**Wiring:** 8" of flying leads within wiring cavity

#### Materials:

**Housing:** Halogen free polycarbonate

**Lens:** Tempered glass, polycarbonate or acrylic

**Mounting tabs:** 304 stainless steel

**Fixture color:** Grey  
 Consult factory for additional color options

### Electrical Specifications:

**Operating voltage:** 100-277 VAC  
 347-480 VAC

**Operating temperature:** -40°F to +131°F (-40°C to +55°C)  
 Battery backup: +50°F to +95°F (10°C to +35°C)

**Total system power consumption:** See table

**EMC:** FCC Title 47, Subpart B, Section 15, Class A

**Transient protection:**  
 100-277 VAC: 6kV (10kV optional)  
 347-480 VAC: 10kV

**THD:** <20%

**Power factor:** >0.9

**Variable dimming:** 0-10 VDC

**Dimming range:** 100%-5%

### Photometric Information:

**CRI:** 80  
 Consult factory for more options available

**CCT:** 5000K (cool white)  
 4000K (neutral white)  
 Consult factory for more options available

All values typical unless otherwise stated (tolerance +/- 10%)

# Ordering Information

## Reliant™ LED High Bay - 100-277 VAC, 347-480 VAC



Most Popular Variants (consult factory for other options)							
Part Number	Form Factor	Fixture Lumens	Wattage	lm/W	Lens	Beam Distribution	Controls
<b>100-277 VAC Models</b>							
RHU-5MC2-CDCN-NGN	Single	16,200	123	132	Diffused Polycarbonate	Medium	Dimming
RHU-5MC2-CFCN-NGN	Single	16,200	123	132	Diffused Polycarbonate	Medium	Occupancy Sensor
RHU-7MC2-CDCN-NGF	Single	18,000	123	146	Tempered Glass	Medium	Dimming
RHU-7MC2-CDCN-NGN	Single	18,000	123	146	Tempered Glass	Medium	Dimming
RHU-7MC2-CFCN-NGN	Single	18,000	123	146	Tempered Glass	Medium	Occupancy Sensor
RHU-5MC2-EDCN-NGN	Single	21,100	163	129	Diffused Polycarbonate	Medium	Dimming
RHU-7MC2-EDCN-NGN	Single	23,520	163	144	Tempered Glass	Medium	Dimming
RHU-5MC2-FDCN-NGN	Single	26,400	199	133	Diffused Polycarbonate	Medium	Dimming
RHU-7AC2-FDCN-NGN	Single	29,400	199	148	Tempered Glass	Aisle	Dimming
RHU-7MC2-FDCN-NGN	Single	29,400	199	148	Tempered Glass	Medium	Dimming
RHU-7MC2-FDCN-NGN	Single	29,400	199	148	Tempered Glass	Medium	Occupancy Sensor
RHU-7MC2-FDCN-NGF	Single	29,400	199	148	Tempered Glass	Medium	Dimming
RHU-5MC2-HDCN-NGN	Single	31,500	239	132	Diffused Polycarbonate	Medium	Dimming
RHU-7MC2-HDCN-NGN	Single	34,500	239	144	Tempered Glass	Medium	Dimming
RHU-7MC2-LDEN-NGN	Tandem Side By Side	47,000	325	145	Tempered Glass	Medium	Dimming
RHU-7MC2-NDEN-NGN	Tandem Side By Side	58,800	398	148	Tempered Glass	Medium	Dimming
RHU-7MC2-RDEN-NGN	Tandem Side By Side	69,000	478	144	Tempered Glass	Medium	Dimming
<b>347-480 VAC Models</b>							
RHU-5MC9-CDCN-NGN	Single	16,200	125	130	Diffused Polycarbonate	Medium	Dimming
RHU-7MC9-EDCN-NGN	Single	23,500	166	142	Tempered Glass	Medium	Dimming
RHU-5MC9-FDCN-NGN	Single	26,400	203	130	Diffused Polycarbonate	Medium	Dimming
RHU-7MC9-FDCN-NGN	Single	29,400	203	145	Tempered Glass	Medium	Dimming
RHU-7MC9-HDCN-NGN	Single	34,550	244	142	Tempered Glass	Medium	Dimming
RHU-7MC9-LDEN-NGN	Tandem Side By Side	47,000	331	142	Tempered Glass	Medium	Dimming
RHU-7MC9-NDEN-NGN	Tandem Side By Side	58,800	406	145	Tempered Glass	Medium	Dimming
RHU-7MC9-RDEN-NGN	Tandem Side By Side	69,100	487	142	Tempered Glass	Medium	Dimming

All values typical unless otherwise stated (tolerance +/- 10%)

**DISCLAIMER.** All product information provided is, to the best of Dialight's knowledge, accurate as of the date of publication. When ordering, refer to [www.dialight.com](http://www.dialight.com) for current versions of: (a) relevant product documentation (including the relevant product data sheets); (b) Dialight terms and conditions of sale; and, (c) the relevant product warranty. To the extent that any contract is deemed formed between Dialight and the purchaser of Dialight products and/or an end-user, versions of documents available at [www.dialight.com](http://www.dialight.com) as at the date of sale shall be the versions incorporated therein. In the event of any discrepancy between this document or information provided at [www.dialight.com](http://www.dialight.com), the latter shall prevail.

# Ordering Information

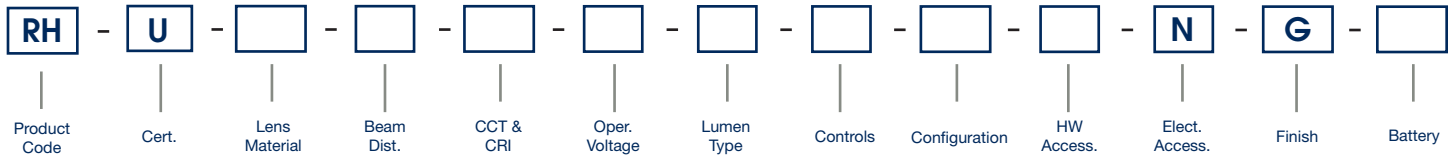
## Reliant™ LED High Bay - 100-277 VAC, 347-480 VAC



Project Information	
Part Number:	
Project:	
Fixture Type:	Date:

Specifications

### Ordering Information



#### Product Code

RH Reliant™ High Bay

#### Certification

U UL 1598, CSA

#### Lens Material

- 2 Acrylic - Clear
- 4 Polycarbonate - Clear
- 5 Polycarbonate - Diffused
- 7 Tempered Glass - Clear

#### Beam Distribution

- A Aisle
- M Medium
- P Aisle Distribution with 10% Up-Light (Factory Installed)
- Q Medium Distribution with 10% Up-Light (Factory Installed)

\* Field installable up-light accessory available

#### CCT & CRI

- C Cool White 5000K - 80 CRI
- N Neutral White 4000K - 80 CRI

#### Operating Voltage

- 2 100-277 VAC, 6kV Surge Protection
- 8 100-277 VAC, 10kV Surge Protection
- 9 347-480 VAC, 10kV Surge Protection

#### Lumen Type

- C 18,000 Lumens
- E 23,500 Lumens
- F 29,400 Lumens
- H 34,600 Lumens

#### Tandem Models

- L 47,000 Lumens
- N 58,800 Lumens
- R 69,100 Lumens

#### Controls

- D Dimming (0-10V)
- F Occupancy Sensor FSP-212
- G Occupancy Sensor, Bluetooth FSP-321B
- J IntelliLED™ Wireless Controls

#### Configuration

- C Single
- E Tandem Side by Side

#### Hardware Accessories

- N No Cord
- 2 6' 18-3 STOOW Power Cord
- 3 12' 18-3 STOOW Power Cord

#### Electrical Accessories

- N No Option

#### Finish

- G Gray

#### Battery

- F Standard Battery Backup - 5W
- G Battery Backup - 10W
- N No Option

#### Notes

- 1) Lumen type based on using a glass lens, medium optic, cool white, 80 CRI. See tables for lumens when changing options.
- 2) For Lumen types L, N, R, use Mounting Option E - Tandem Side by Side.
- 3) Up-light accessory available with Lumen Type - C, E, F, L, N models only.

**DISCLAIMER.** All product information provided is, to the best of Dialight's knowledge, accurate as of the date of publication. When ordering, refer to [www.dialight.com](http://www.dialight.com) for current versions of: (a) relevant product documentation (including the relevant product data sheets); (b) Dialight terms and conditions of sale; and, (c) the relevant product warranty. To the extent that any contract is deemed formed between Dialight and the purchaser of Dialight products and/or an end-user, versions of documents available at [www.dialight.com](http://www.dialight.com) as at the date of sale shall be the versions incorporated therein. In the event of any discrepancy between this document or information provided at [www.dialight.com](http://www.dialight.com), the latter shall prevail.

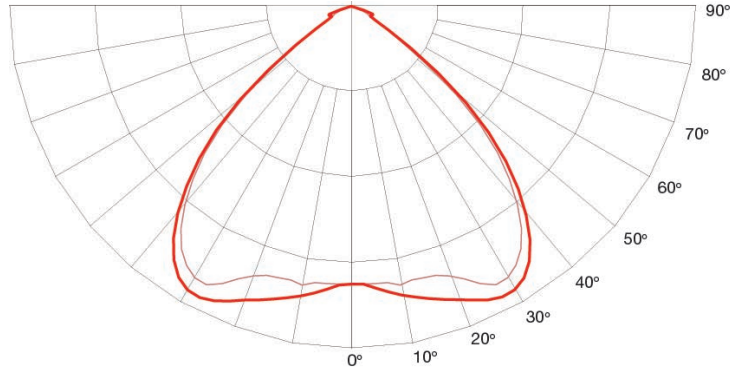
# Lumen Tables

100-277 VAC								
CRI	Output Family	Beam Distribution	Lens	Wattage	Lumens 5000K CCT	5000K CCT lm/W	Lumens 4000K CCT	4000K CCT lm/W
80	70,500	Aisle	Glass	478	69,090	145	67,708	142
			Acrylic Clear		68,385	143	67,017	140
			Polycarbonate - Clear		64,860	136	63,563	133
			Polycarbonate - Diffused		62,040	130	60,799	127
		Medium	Glass		69,090	145	67,708	142
			Acrylic Clear		68,385	143	67,017	140
			Polycarbonate - Clear		64,860	136	63,563	133
			Polycarbonate - Diffused		62,040	130	60,799	127
80	60,000	Aisle	Glass	398	58,800	148	57,624	145
			Acrylic Clear		58,200	146	57,036	143
			Polycarbonate - Clear		55,200	139	54,096	136
			Polycarbonate - Diffused		52,800	133	51,744	130
		Medium	Glass		58,800	148	57,624	145
			Acrylic Clear		58,200	146	57,036	143
			Polycarbonate - Clear		55,200	139	54,096	136
			Polycarbonate - Diffused		52,800	133	51,744	130
80	48,000	Aisle	Glass	325	47,040	145	46,099	142
			Acrylic Clear		46,560	143	45,629	140
			Polycarbonate - Clear		44,160	136	43,277	133
			Polycarbonate - Diffused		42,240	130	41,395	127
		Medium	Glass		47,040	145	46,099	142
			Acrylic Clear		46,560	143	45,629	140
			Polycarbonate - Clear		44,160	136	43,277	133
			Polycarbonate - Diffused		42,240	130	41,395	127
80	35,250	Aisle	Glass	239	34,545	145	33,854	142
			Acrylic Clear		34,193	143	33,509	140
			Polycarbonate - Clear		32,430	136	31,781	133
			Polycarbonate - Diffused		31,020	130	30,400	127
		Medium	Glass		34,545	145	33,854	142
			Acrylic Clear		34,193	143	33,509	140
			Polycarbonate - Clear		32,430	136	31,781	133
			Polycarbonate - Diffused		31,020	130	30,400	127
80	30,000	Aisle	Glass	199	29,400	148	28,812	145
			Acrylic Clear		29,100	146	28,518	143
			Polycarbonate - Clear		27,600	139	27,048	136
			Polycarbonate - Diffused		26,400	133	25,872	130
		Medium	Glass		29,400	148	28,812	145
			Acrylic Clear		29,100	146	28,518	143
			Polycarbonate - Clear		27,600	139	27,048	136
			Polycarbonate - Diffused		26,400	133	25,872	130
80	24,000	Aisle	Glass	163	23,520	145	23,050	142
			Acrylic Clear		23,280	143	22,814	140
			Polycarbonate - Clear		22,080	136	21,638	133
			Polycarbonate - Diffused		21,120	130	20,698	127
		Medium	Glass		23,520	145	23,050	142
			Acrylic Clear		23,280	143	22,814	140
			Polycarbonate - Clear		22,080	136	21,638	133
			Polycarbonate - Diffused		21,120	130	20,698	127
80	18,400	Aisle	Glass	123	18,032	147	17,671	144
			Acrylic Clear		17,848	146	17,491	143
			Polycarbonate - Clear		16,928	138	16,589	135
			Polycarbonate - Diffused		16,192	132	15,868	130
		Medium	Glass		18,032	147	17,671	144
			Acrylic Clear		17,848	146	17,491	143
			Polycarbonate - Clear		16,928	138	16,589	135
			Polycarbonate - Diffused		16,192	132	15,868	130
70	18,400	Aisle	Glass	123	19,294	158	18,908	154
		Medium	Glass		19,294	158	18,908	154

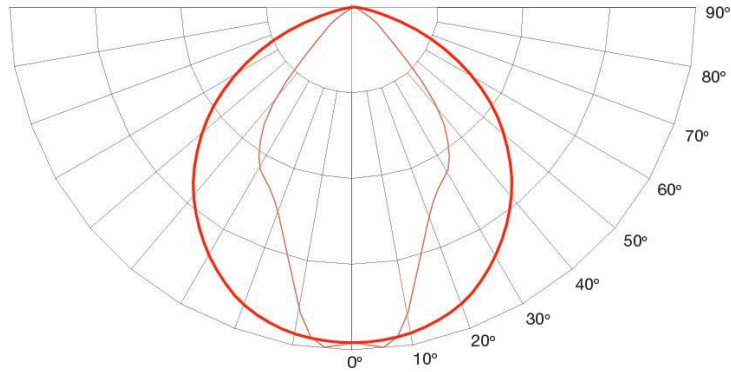
**DISCLAIMER.** All product information provided is, to the best of Dialight's knowledge, accurate as of the date of publication. When ordering, refer to [www.dialight.com](http://www.dialight.com) for current versions of: (a) relevant product documentation (including the relevant product data sheets); (b) Dialight terms and conditions of sale; and, (c) the relevant product warranty. To the extent that any contract is deemed formed between Dialight and the purchaser of Dialight products and/or an end-user, versions of documents available at [www.dialight.com](http://www.dialight.com) as at the date of sale shall be the versions incorporated therein. In the event of any discrepancy between this document or information provided at [www.dialight.com](http://www.dialight.com), the latter shall prevail.

# Beam Distribution

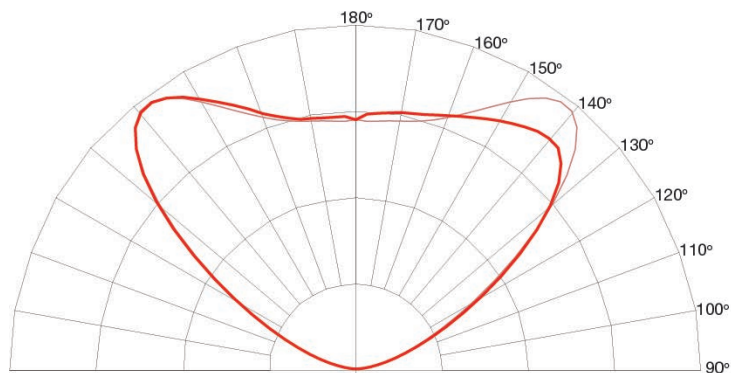
Medium



Aisle



Uplight



**DISCLAIMER.** All product information provided is, to the best of Dialight's knowledge, accurate as of the date of publication. When ordering, refer to [www.dialight.com](http://www.dialight.com) for current versions of: (a) relevant product documentation (including the relevant product data sheets); (b) Dialight terms and conditions of sale; and, (c) the relevant product warranty. To the extent that any contract is deemed formed between Dialight and the purchaser of Dialight products and/or an end-user, versions of documents available at [www.dialight.com](http://www.dialight.com) as at the date of sale shall be the versions incorporated therein. In the event of any discrepancy between this document or information provided at [www.dialight.com](http://www.dialight.com), the latter shall prevail.

# Inrush Current / Circuit Breakers

Model	Max Wattage	Inrush Current @ Input Voltage			Approx. Time Duration (T50) of Inrush Current			Max # of Lights per Breaker @100 VAC			Max # of Lights per Breaker @120 VAC			Max # of Lights per Breaker @277 VAC		
		100 VAC	120 VAC	277 VAC	100 VAC	120 VAC	277 VAC	C10	B16	C16	C10	B16	C16	C10	B16	C16
18k	142	6.5A	7.7A	18A	1.5ms	1.5ms	1.5ms	5	8	8	6	10	10	14	22	22
18k-U	152	6.5A	7.7A	18A	1.5ms	1.5ms	1.5ms	5	7	7	6	9	9	13	20	20
24k	188	6.5A	7.7A	18A	1.5ms	1.5ms	1.5ms	4	6	6	5	7	7	10	17	17
24k-U	205	6.5A	7.7A	18A	1.5ms	1.5ms	1.5ms	3	6	6	4	7	7	9	15	15
30k	232	6.5A	7.7A	18A	1.5ms	1.5ms	1.5ms	3	5	5	4	6	6	8	13	13
30k-U	257	6.5A	7.7A	18A	1.5ms	1.5ms	1.5ms	3	4	4	3	5	5	8	12	12
36k	267	6.5A	7.7A	18A	1.5ms	1.5ms	1.5ms	3	4	4	3	5	5	7	11	11
48k	376	13A	15.4A	36A	1.5ms	1.5ms	1.5ms	2	3	3	2	3	3	5	8	8
48k-U	410	13A	15.4A	36A	1.5ms	1.5ms	1.5ms	1	3	3	2	3	3	4	7	7
60k	464	13A	15.4A	36A	1.5ms	1.5ms	1.5ms	1	2	2	2	3	3	4	6	6
60k-U	514	13A	15.4A	36A	1.5ms	1.5ms	1.5ms	1	2	2	1	2	2	4	6	6
72k	534	13A	15.4A	36A	1.5ms	1.5ms	1.5ms	1	2	2	1	2	2	3	5	5

-U = 10% up-light accessory models

Model	Max Wattage	Inrush Current @ Input Voltage		Approx. Time Duration (T50) of Inrush Current		Max # of Lights per Breaker @ 347 VAC			Max # of Lights per Breaker @ 480VAC		
		347 VAC	480 VAC	347 VAC	480 VAC	C10	B16	C16	C10	B16	C16
18k	134	4A	5.6A	1.8ms	1.8ms	18	29	29	25	40	40
18k-U	152	4A	5.6A	1.8ms	1.8ms	16	26	26	22	35	35
24k	177	4A	5.6A	1.8ms	1.8ms	14	22	22	19	30	30
24k-U	198	4A	5.6A	1.8ms	1.8ms	12	20	20	17	27	27
30k	224	4A	5.6A	1.8ms	1.8ms	11	18	18	15	24	24
30k-U	245	4A	5.6A	1.8ms	1.8ms	10	16	16	14	22	22
36k	264	4A	5.6A	1.8ms	1.8ms	9	15	15	13	21	21
48k	354	8A	11.2A	1.8ms	1.8ms	7	11	11	9	15	15
48k-U	396	8A	11.2A	1.8ms	1.8ms	6	10	10	8	13	13
60k	448	8A	11.2A	1.8ms	1.8ms	5	9	9	7	12	12
60k-U	490	8A	11.2A	1.8ms	1.8ms	5	8	8	7	11	11
72k	528	8A	11.2A	1.8ms	1.8ms	4	7	7	6	10	10

-U = 10% up-light accessory models

**DISCLAIMER.** All product information provided is, to the best of Dialight's knowledge, accurate as of the date of publication. When ordering, refer to [www.dialight.com](http://www.dialight.com) for current versions of: (a) relevant product documentation (including the relevant product data sheets); (b) Dialight terms and conditions of sale; and, (c) the relevant product warranty. To the extent that any contract is deemed formed between Dialight and the purchaser of Dialight products and/or an end-user, versions of documents available at [www.dialight.com](http://www.dialight.com) as at the date of sale shall be the versions incorporated therein. In the event of any discrepancy between this document or information provided at [www.dialight.com](http://www.dialight.com), the latter shall prevail.

# Lumen Maintenance Factor

% Lumen Output (Models ≤ 24k lm)										
Ambient Temperature		Hours								
		0	15000	30000	45000	60000	75000	90000	100000	150000
25°C	77°F	100%	98%	96%	95%	94%	92%	91%	90%	86%
30°C	86°F	99%	97%	95%	94%	93%	92%	90%	89%	85%
35°C	95°F	98%	96%	95%	93%	92%	91%	90%	89%	85%
40°C	104°F	97%	95%	94%	93%	91%	90%	89%	88%	84%
45°C	113°F	97%	94%	93%	92%	90%	89%	88%	87%	83%
50°C	122°F	96%	94%	92%	91%	90%	88%	87%	86%	83%
55°C	131°F	95%	93%	91%	90%	89%	88%	87%	86%	82%

% Lumen Output (25k lm < Models < 30k lm)										
Ambient Temperature		Hours								
		0	15000	30000	45000	60000	75000	90000	100000	150000
25°C	77°F	100%	98%	96%	95%	94%	92%	91%	90%	86%
30°C	86°F	99%	97%	96%	94%	93%	92%	90%	90%	86%
35°C	95°F	99%	96%	95%	94%	93%	91%	90%	89%	85%
40°C	104°F	98%	95%	94%	93%	91%	90%	89%	88%	84%
45°C	113°F	97%	94%	93%	92%	90%	89%	88%	87%	83%
50°C	122°F	89%	87%	85%	84%	83%	82%	81%	80%	76%
55°C	131°F	75%	73%	72%	71%	70%	69%	68%	67%	64%

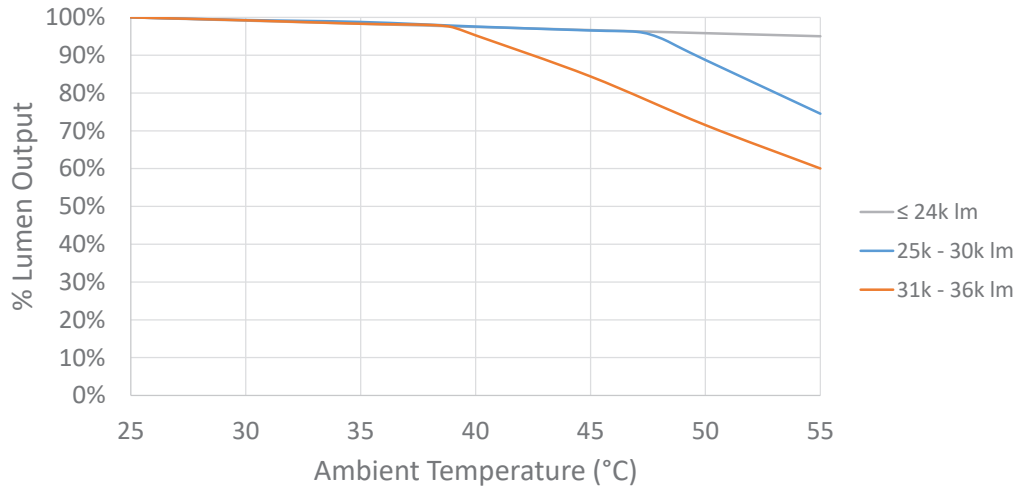
% Lumen Output (31k lm < Models < 36k lm)										
Ambient Temperature		Hours								
		0	15000	30000	45000	60000	75000	90000	100000	150000
25°C	77°F	100%	98%	96%	95%	94%	92%	91%	90%	86%
30°C	86°F	99%	97%	96%	94%	93%	92%	90%	90%	85%
35°C	95°F	98%	96%	95%	93%	92%	91%	90%	89%	85%
40°C	104°F	95%	93%	92%	90%	89%	88%	87%	86%	82%
45°C	113°F	84%	82%	81%	80%	79%	78%	77%	76%	73%
50°C	122°F	72%	70%	69%	68%	67%	66%	65%	65%	62%
55°C	131°F	60%	59%	58%	57%	56%	55%	55%	54%	52%

All tables are for single unit models only. For tandem models, 48k similar to 24k, 60k is similar to 30k, and 72k is similar to 36k.

**DISCLAIMER.** All product information provided is, to the best of Dialight's knowledge, accurate as of the date of publication. When ordering, refer to [www.dialight.com](http://www.dialight.com) for current versions of: (a) relevant product documentation (including the relevant product data sheets); (b) Dialight terms and conditions of sale; and, (c) the relevant product warranty. To the extent that any contract is deemed formed between Dialight and the purchaser of Dialight products and/or an end-user, versions of documents available at [www.dialight.com](http://www.dialight.com) as at the date of sale shall be the versions incorporated therein. In the event of any discrepancy between this document or information provided at [www.dialight.com](http://www.dialight.com), the latter shall prevail.



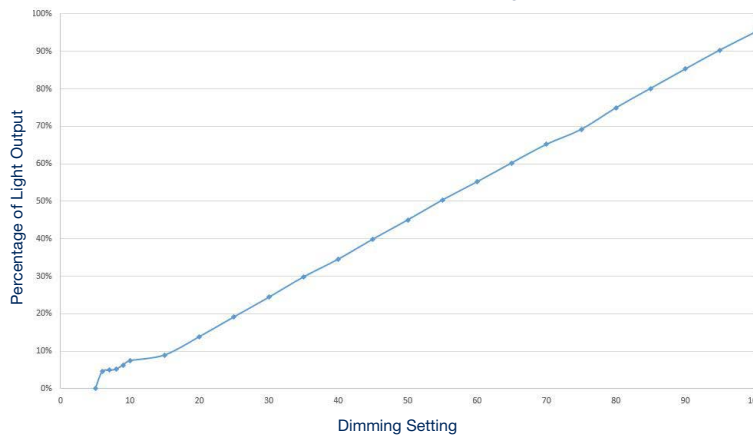
# Thermal Roll-Off



For single unit models only. For tandem models, 48k similar to 24k, 60k is similar to 30k, and 72k is similar to 36k.

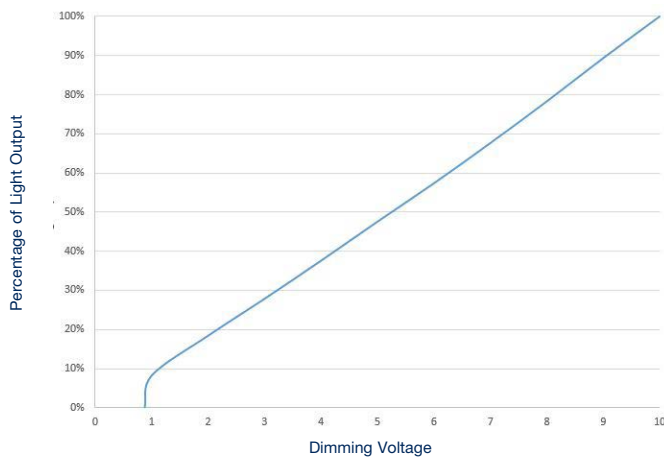
# Dimming Characterization

## IntelliLED Dimming

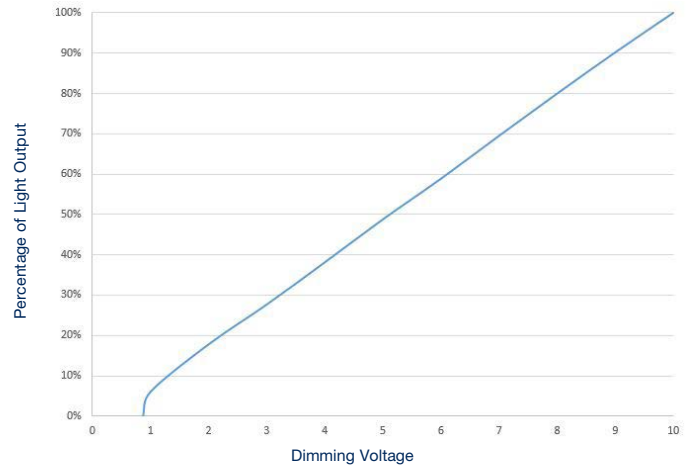


## 0-10V Dimming

### Input Power VS Dimming Voltage



### Light Output VS Dimming Voltage



**DISCLAIMER.** All product information provided is, to the best of Dialight's knowledge, accurate as of the date of publication. When ordering, refer to [www.dialight.com](http://www.dialight.com) for current versions of: (a) relevant product documentation (including the relevant product data sheets); (b) Dialight terms and conditions of sale; and, (c) the relevant product warranty. To the extent that any contract is deemed formed between Dialight and the purchaser of Dialight products and/or an end-user, versions of documents available at [www.dialight.com](http://www.dialight.com) as at the date of sale shall be the versions incorporated therein. In the event of any discrepancy between this document or information provided at [www.dialight.com](http://www.dialight.com), the latter shall prevail.

### Mounting Accessories



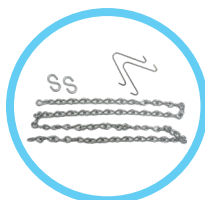
**RH-MCAB-5 (6' option)**  
**RH-MCAB-10 (10' option)**  
**RH-MCAB-15 (16' option)**  
**RH-MCAB-20 (22' option)**

- Wire rope hanging kit
- Includes electro-galvanized steel looped end wires (2x), wire locking devices (2x) & v-hangers (2x)



**RH-YCAB-5 (6' option)**  
**RH-YCAB-10 (10' option)**  
**RH-YCAB-20 (22' option)**

- Wire rope hanging kit
- Includes electro-galvanized steel y-hook wires (2x) and wire locking devices (2x)



**RH-CHAIN-3 (3' option)**  
**RH-CHAIN-4 (4' option)**  
**RH-CHAIN-6 (6' option)**

- Jack chain hanging kit
- Includes steel chains (2x), s-hooks (4x), and v-hangers (2x)



**RH-VHANGER**

- 304 stainless steel v-hangers (2x)



**RH-PENDANT-BRKT**

- 3/4" NPT pendant mount kit
- Includes low copper A360 aluminum die cast adapter and hardware



**RH-TANBRKT-SBS**

- Side-by-side tandem kit
- Includes 304 stainless steel brackets, hardware, and wire harnesses

### Additional Accessories

For use as replacement parts or for field customized projects.



**RH-WIRELESS-1**

- IntelliLED wireless control kit



**RH-WS-OCC-212**

- WattStopper FSP-212 occupancy sensor kit
- Adjustable via dipswitch on sensor
- PIR (Passive Inferred) occupancy sensing / daylight harvesting
- Time delay: 30 sec.-30 min.; default 15 minute



**RH-WS-OCC-321**

- WattStopper FSP-321 occupancy sensor kit
- Configurable and adjustable via Legrand's Bluetooth enable app.
- PIR (Passive Inferred) occupancy sensing / daylight harvesting
- Time delay: 5 min.-30 min.; default 15 minute



**RH-UPL-CWB (CW)**  
**RH-UPL-NWB (NW)**

- Direct up-lighting kit - set of 2
- For use with 18k, 24k, 48K models



**RH-UPL-CWC (CW)**  
**RH-UPL-NWC (NW)**

- Direct up-lighting kit - set of 2
- For use with 30K, 60K models



**RH-EBU-800**

- 5W battery backup kit
- RH-EBU-1500**
- 10W battery backup kit



**RH-10KV-277**

- 100-277 VAC surge protection kit

**RH-10KV-480**

- 347-480 VAC surge protection kit

**DISCLAIMER.** All product information provided is, to the best of Dialight's knowledge, accurate as of the date of publication. When ordering, refer to [www.dialight.com](http://www.dialight.com) for current versions of: (a) relevant product documentation (including the relevant product data sheets); (b) Dialight terms and conditions of sale; and, (c) the relevant product warranty. To the extent that any contract is deemed formed between Dialight and the purchaser of Dialight products and/or an end-user, versions of documents available at [www.dialight.com](http://www.dialight.com) as at the date of sale shall be the versions incorporated therein. In the event of any discrepancy between this document or information provided at [www.dialight.com](http://www.dialight.com), the latter shall prevail.

## North American HQ

1501 Route 34 South  
Farmingdale, NJ 07727  
Tel: 732-919-3119  
Fax: 732-751-5778  
info@dialight.com

## Houston

16830 Barker Springs Rd  
Ste 407  
Houston, TX 77084  
Tel: 732-919-3119  
Fax: 281-492-1531  
info@dialight.com

## Brazil

Alameda Mercurio,  
225 – American Park Empresarial NR  
Indaiatuba – SP – 13347– 662  
Tel: +55 (19) 3113-4300  
Fax: +55 (19) 3113-4300  
brasil@dialight.com

### WARNING / DISCLAIMERS:

**Installation & secondary retention.** The use of this product without proper installation (including secondary retention / netting) and periodic inspections, could cause severe injury or death. Dialight recommends that all installations should use secondary retention / netting (appropriate to the installation environment) as applicable. Dialight products are intended for ultimate purchase, installation and operation by knowledgeable persons trained in the functional assessment, installation, use and maintenance of such products and all customers (including but not limited to end customers) are responsible for assessing the suitability of Dialight products for any given installation requirement. It is the exclusive responsibility of the contractor, installer and/or end-user to: (a) determine the suitability of the product for its intended application; and, (b) ensure that the product is safely installed (with secondary retention / netting as appropriate) and in compliance with all applicable laws and regulations.

**Product specifications & warranties.** All product information provided is, to the best of Dialight's knowledge, accurate as of the date of publication. All values and performance data herein are design or typical values when measured under laboratory conditions. The information herein is subject to change without notice. The products / software detailed herein are subject to applicable warranties and terms and conditions of use/purchase. Unless agreed otherwise in writing by an authorized representative of Dialight, Dialight does not represent that its products are fit for any particular purpose and accepts no liability for the installation and/or unauthorised use of its products. When ordering, refer to [www.dialight.com](http://www.dialight.com) for current versions of: (a) relevant product documentation (including relevant product data sheets); (b) Dialight terms and conditions of sale; and, (c) the relevant product warranties. To the extent that any contract is deemed formed between Dialight and the purchaser of Dialight products and/or an end-user, versions of documents available at [www.dialight.com](http://www.dialight.com) as at the date of sale shall be the versions incorporated therein. In the event of any discrepancy between this document and information provided at [www.dialight.com](http://www.dialight.com), the latter shall prevail.

**Exclusion of liability.** To the extent permissible under the relevant law, Dialight disclaims all liability for personal injury and/or other damage resulting from any dislodgment or other dislocation of its products. Whilst Dialight has used its reasonable endeavours to ensure the completeness and accuracy of information herein, Dialight does not assume any liability for damages resulting from use of this information or for any third-party representations made in relation to Dialight products.