

**GREATER VERSATILITY
WITH LESS DOWNTIME**



PLEXPOWER™ DISTRIBUTION PANELBOARDS

APPLETON™


EMERSON

EASY TO INSTALL, OPERATE AND MAINTAIN.



The PlexPower™ panelboard is engineered to meet your precise requirements today. Easily upgradeable to handle additional capacity tomorrow.

Our innovative breaker enclosure design provides flameproof protection for Zone 1-2 and 21-22 locations using standard off-the-shelf circuit breakers. Breakers can be quickly replaced in the field, and a true MCCB mains breaker means there's never a need to replace a disconnect fuse.

These panelboards also deliver unprecedented design flexibility, featuring a modular enclosure, bus bar system, optional removable gland plate and the capacity to handle mains breakers up to 250 Amps and branch breakers up to 63 Amps. With six standard configurations and limitless custom configurations, PlexPower™ accommodates virtually any application, while its modular design easily adapts as your power distribution needs change and grow.

LESS DOWNTIME. MORE DESIGN FLEXIBILITY.

Only PlexPower™ panelboards feature circuit breaker housings with a flameproof labyrinth joint, eliminating the need for expensive epoxy sealed breakers that are difficult to source and stock. PlexPower™ panelboards are easy to configure and upgrade as needed, with modular components that can be coupled together to suit your footprint and branch circuit requirements.

- External actuation of mains breaker – simplifies disconnect while maintaining enclosure integrity
- External actuation of branch breakers through a weatherproof window – enables simple operation of branch circuits
- Accepts multiple lockouts – helps ensure workplace safety
- Tough polyester or stainless steel construction – provides a lifetime of durable, corrosion resistant service

HAZARDOUS LOCATION CERTIFICATIONS:

- ATEX/IECEX:
 - Zone 1 and 2 – 21 and 22
 -  II2GD
 - EPL Gb Db
 - Ex db eb IIB+H₂
 - Ex tb IIIC
 - IP66/IK10
- ATEX/IECEX – Optional:
 - Zone 1 and 2 – 21 and 22
 -  II2GD
 - EPL Gb Db
 - Ex db eb IIC
 - Ex tb IIIC
 - IP66/IK10

INDUSTRIES AND APPLICATIONS

PlexPower™ panelboards provide reliable flameproof protection of lighting, heat trace and power circuits in Zone 1 and 2 – 21 and 22 environments.

Indoors or outdoors, in weather exposed and corrosive environments, PlexPower™ panelboards are the ideal electrical distribution solution for every part of your facility.



FLEXIBLE INSTALLATION.

BUS BAR

50 kAIC hard drawn copper bus bar provides robust, reliable and efficient electrical connections in a compact space

FACTORY WIRED LINE AND LOAD TERMINATIONS

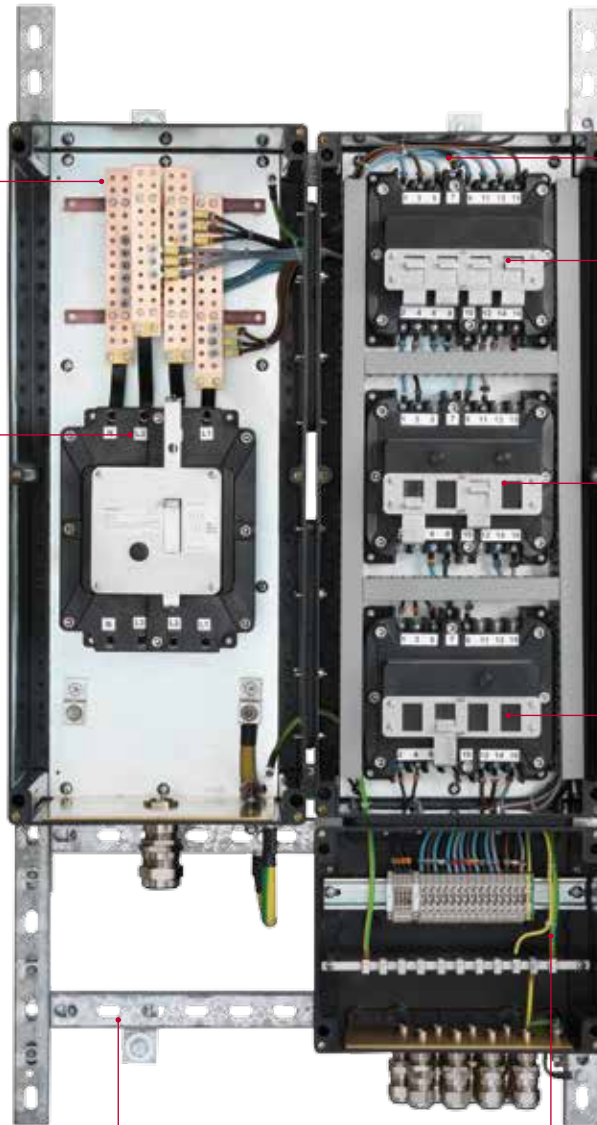
Sized to maximum capacity of 6mm² for use with branch breakers up to 63 Amps with no rewiring required

INCOMING MAINS BREAKER (MCCB) OR DISCONNECT

2-pole, 3-pole or 4-pole mains breaker, from 40 through 250 Amps.

BREAKER FLEXIBILITY

Standard, off-the-shelf branch breakers are available in 1-, 2-, 3- and 4-pole and 1-pole plus neutral; available with multiple sensitivity GFI and with option of auxiliary contacts



CHASSIS FRAME

Hot dip galvanized steel frame and adjustable mounting lugs for easy mounting

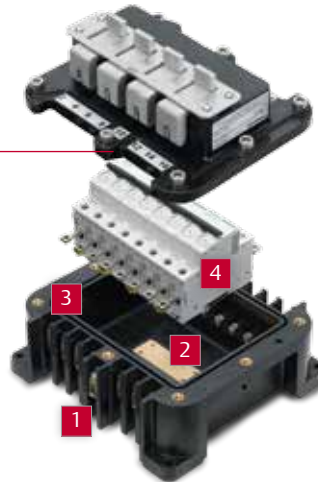
MODULAR DESIGN

Enclosures offer vertical and horizontal coupling options for practically unlimited circuit configurations

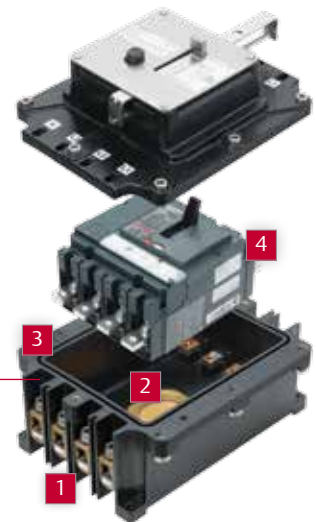
SIMPLE OPERATION AND MAINTENANCE.



BRANCH BREAKER



MAINS BREAKER



1. RUGGED TERMINATION

Each circuit breaker housing connects to the panelboard through Increased Safety line and load terminations for unyielding performance through years of heavy vibrations and shocks

2. VENTING PLATE

Unique design of breaker housing allows safe heat dissipation, enabling breakers to maintain their rated amperage while eliminating nuisance tripping

3. FLAMEPROOF ENCLOSURE HOUSING

Labyrinth joint construction maintains hazardous location rating while allowing easy disassembly for servicing breakers

4. FIELD REPLACEABLE BREAKER

Standard, off-the-shelf circuit breakers are easy to obtain and reduce inventory costs and downtime



EXTERNAL MAINS BREAKER ACTUATION

External actuation of mains breaker allows for simple operation; provided with multiple lockouts for improved security

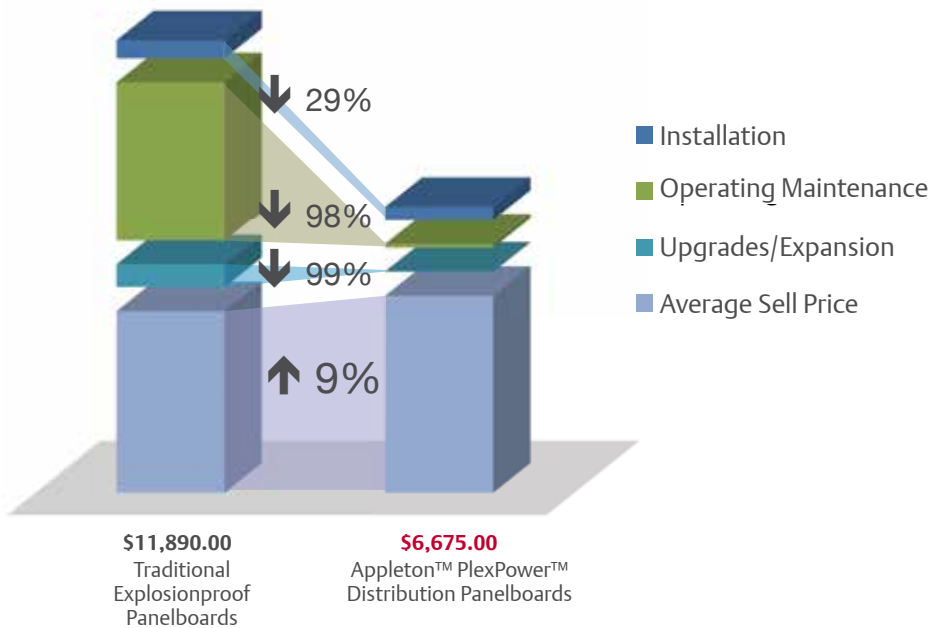


WEATHERPROOF WINDOW

External actuation of branch breakers through a weatherproof window simplifies operation

93% LOWER OPERATIONAL COSTS.*

PlexPower™ panelboards provide reliable flameproof protection of lighting, heat trace and power circuits in Zone 1 and 2 – 21 and 22 environments.



EASIER INSTALLATION

- Lighter weight panelboard includes frame support.
- No need for special handling equipment

EASIER OPERATION

- Mains breaker (MCCB) provides short circuit and overload protection with external actuation for quick reset.
- Weatherproof windows allow external operation of branch breakers, with no need to open the enclosure.

EASIER UPGRADES

- Add circuits and increase breaker capacity using affordable off-the-shelf breakers
- Bus bar design allows you to expand or reconfigure the panel with no rewiring

EASIER MAINTENANCE

- Minimize downtime and production loss during routine inspection
- Replace breakers by opening individual housings with standard hand tools

* Based on typical parts and labor costs, PlexPower™ Panelboards can save up to 93% in the first year of ownership compared to the cost of installing, operating and maintaining a traditional cast and bolted breaker panel. Savings continue to accrue year after year with each maintenance event that would otherwise require expensive parts and extensive downtime.

BUILT FOR THE GLOBAL MARKETPLACE.



PlexPower™ panelboards are the next advancement in panelboard design for IEC markets. Less downtime, increased design flexibility and lower operational costs – that's PlexPower™, only from Appleton™.

UNSURPASSED PROTECTION

Visit www.emerson.com or contact your local Appleton™ representative to configure your PlexPower™ Panelboards for your requirements today – with confidence you can easily upgrade as needed tomorrow.

**United States
(Headquarters)**

Appleton Grp LLC
9377 W. Higgins Road
Rosemont, IL 60018
United States
T +1 800 621 1506

Europe

ATX SAS
Espace Industriel Nord
35, rue André Durouchez,
CS 98017
80084 Amiens Cedex 2, France
T +33 3 2254 1390

Canada

EGS Electrical Group Canada Ltd.
99 Union Street
Elmira ON, N3B 3L7
Canada
T +1 888 765 2226

Asia Pacific

EGS Private Ltd.
Block 4008, Ang Mo Kio Ave 10,
#04-16 TechPlace 1,
Singapore 569625
T +65 6556 1100

Latin America

EGS Comercializadora Mexico S
de RL de CV
Calle 10 N°145 Piso 3
Col. San Pedro de los Pinos
Del. Álvaro Obregon
Ciudad de México. 01180
T +52 55 5809 5049

Australia Sales Office

Bayswater, Victoria
T +61 3 9721 0348

China Sales Office

Shanghai
T +86 21 3338 7000

Middle East Sales Office

Dammam, Saudi Arabia
T +966 13 510 3702

Chile Sales Office

Las Condes
T +56 2928 4819

India Sales Office

Chennai
T +91 44 3919 7300

Korea Sales Office

Seoul
T +82 2 3483 1555



Emerson.com



LinkedIn.com/company/emerson

APPLETON™



The Emerson logo is a trademark and service mark of Emerson Electric Co. © 2016 Emerson Electric Co. The Appleton brand logo is a registered trademark of Appleton Grp LLC. All other marks are the property of their respective owners. © 2017 Emerson Automation Solutions. All rights reserved.

EMERSON. CONSIDER IT SOLVED.™