

KRS/KRJ SERIES PLUG



KRS Series



KRA Series



Plug

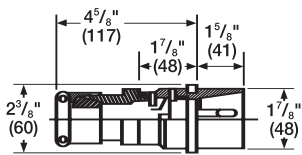
Class I, Div. 1 & 2, Groups C,D[Ⓢ]
Class I, Zones 1 & 2, IIB, IIA
NEMA 7 (C,D)



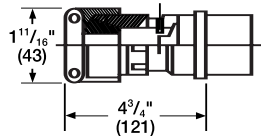
Listed - File E23572

See files for details or call Killark.

FEATURES-SPECIFICATIONS



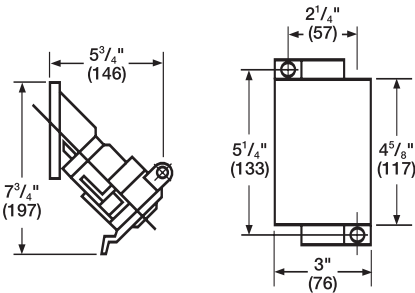
D Type



E Type

KP 30 AMP PLUG			
CATALOG NUMBER		PLUG TYPE	GROMMET RANGE
1Ø, 2-WIRE, 3-POLE	3Ø, 3-WIRE 4-POLE		
KP-303D23	KP-304D23	D	.375-.625
KP-303D45	KP-304D45	D	.625-.875
KP-303E45	KP-304E45	E	.875-1.125
KP-303E67	KP-304E67	E	1.125-1.375

See page PR20 for available polarization options.



KRS-Series

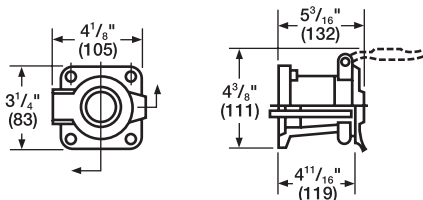
KRS RECEPTACLE WITH SWB BOX [Ⓢ]								
HUB SIZE	CATALOG NUMBER - SINGLE GANG ONLY							
	1Ø, 2-WIRE, 3-POLE DEAD END BOX	BOX ONLY	1Ø, 2-WIRE, 3-POLE FEED THRU BOX	BOX ONLY	3Ø, 3-WIRE, 4-POLE DEAD END BOX	BOX ONLY	3Ø, 3-WIRE, 4-POLE FEED THRU BOX	BOX ONLY
1/2"	KRS-215-1303	SWB-1	KRS-218-1303	SWB-4	KRS-215-1304	SWB-1	KRS-218-1304	SWB-4
3/4"	KRS-215-2303	SWB-2	KRS-218-2303	SWB-5	KRS-215-2304	SWB-2	KRS-218-2304	SWB-5
1"	KRS-215-3303	SWB-3	KRS-218-3303	SWB-6	KRS-215-3304	SWB-3	KRS-218-3304	SWB-6
RECEPTACLE ONLY	KRS-303				KRS-304			

[Ⓢ]KRS Series receptacles - Class I, Group D.

[Ⓢ]SWB Series mounting splice boxes for receptacles shown above listed on page C29.

Two gang models not available.

See page PR20 for available polarization options.



KRJ-Series

ELECTRICAL RATING	
CIRCUIT	RATING (60 HERTZ)
1 Ø	7 Amps 460 V.A.C. 1/2 H.P.
2-Wire	- OR -
3-Pole	30 Amps 115/230 V.A.C. 1-1/2 H.P.
3 Ø	7 Amps 460 V.A.C. 1 H.P.
3-Wire	- OR -
4-Pole	30 Amps 115/230 V.A.C. 3 H.P.



AJC



JLC



JLX

KRJ RECEPTACLE WITH AJ OR JL BOX				
CIRCUIT	HUB SIZE	CATALOG NUMBER		
		AJC	JLC	JLX
1Ø 2-Wire 3-Pole	1/2"	—	KRJC-1303	KRJX-1303
	3/4"	KRAJC-2303	KRJC-2303	KRJX-2303
	1"	KRAJC-3303	—	—
RECEPTACLE ONLY- CATALOG NUMBER KRJ-303				
3Ø 3-Wire 4-Pole	1/2"	—	KRJC-1304	KRJX-1304
	3/4"	KRAJC-2304	KRJC-2304	KRJX-2304
	1"	KRAJC-3304	—	—
RECEPTACLE ONLY- CATALOG NUMBER KRJ-304				
Back Box Only	1/2"	—	JLC-1	JLX-1
	3/4"	AJC-2	JLC-2	JLX-2
	1"	AJC-3	—	—

JL Series boxes shown on page F61. Refer to page headings for suitability of specific items.

See page PR20 for available polarization options.

