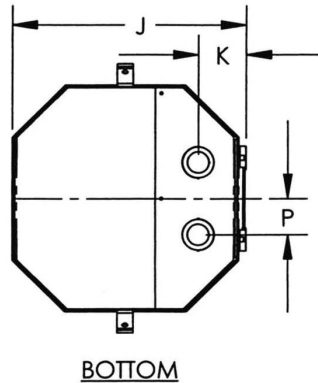
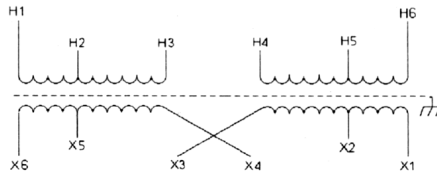
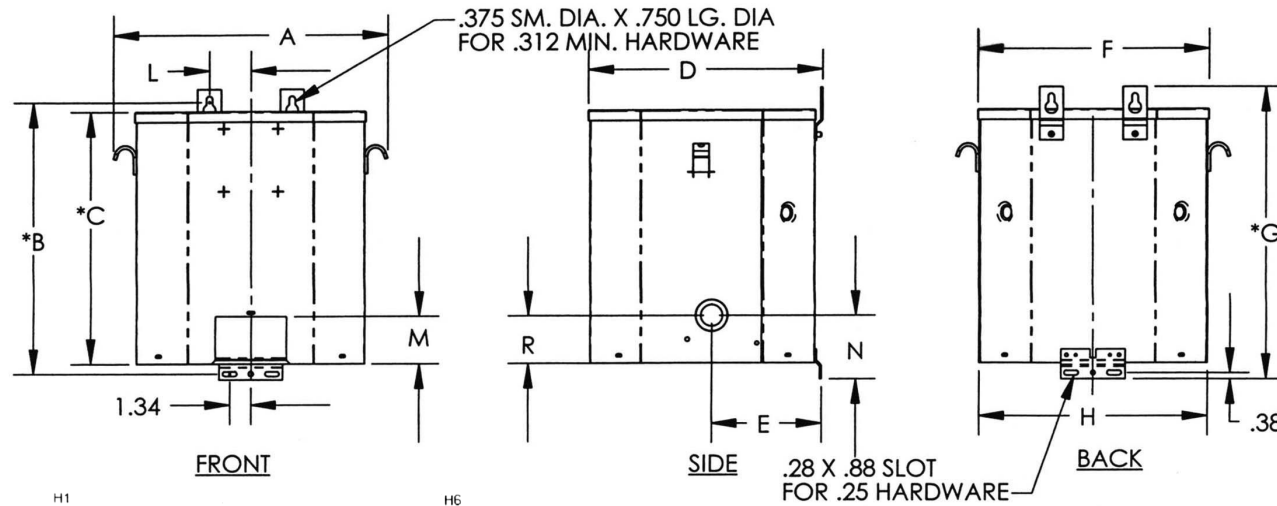


Revisions



INPUT CONNECTIONS		
CONNECT LINES TO		
VOLTS	CONNECT	LINES
277	H2 TO H4	H1 - H5
480	H3 TO H4	H1 - H6

OUTPUT CONNECTIONS		
VOLTS	CONNECT	LINES
208	X2 TO X4	X1-X5
277	X3 TO X4	X1-X6

KVA	CATALOG NUMBER	VOLTAGE		WIRING DIAGRAM	WEIGHT	PHASE	FREQ.
		HIGH	LOW				
15	GP12-15000-S	277 / 480	208 / 277		161Lbs	1	60 Hz

Winding Rise	115°C
Insulation	180°C
Sound Level	45 dB

TYPICAL PERFORMANCE DATA

Regulation @ 100% PF	0.437%
----------------------	--------

IMPEDANCE	3.84%
-----------	-------

Typical Efficiency	98.18%
Full Load Losses	278 W
No Load Losses	157 W

A	B	C	D	E	F	G	H	J	K	L	M	N	P	R
16.13	17.43	16.06	13.34	4.58	13.75	18.44	13.63	13.13	2.68	2.44	3.00	3.13	2.00	3.00



Type No.

A

PRINTS TO

CONTROL
7

GP12-15000-S