

Polysafe

Features

- 14 standard sizes range from 20" x 20" to 50" x 40" with a single depth of 12-1/2".
- The entire Polysafe enclosure series are 4mm thick, Halogen-free, hot compression molded fiberglass reinforced polyester and are self-extinguishing.
- Doors and panels are made of gray (RAL 7035)
- Doors are mounted on internal hinges and the latches have a 5-point internal latching mechanism.
- Designed to be wall mounted or free-standing.
- Contains a (PUR) continuously poured polyurethane gasket.
- May be horizontally or vertically coupled.
- Two depth extensions may be added while retaining UL rating.
- Temperature resistant from a constant 59°F to +302°F and momentary temperature to +392°F.
- All factory assembled units maintain total insulation and have been tested to IP65-1K10 (20J) acc. To IEC 60529 and CENELEC EN50102.
- Maintenance-free and corrosion resistant.
- Ideal for both indoor and outdoor applications.

Application

The Polysafe is highly effective at resisting corrosion and Vynckier's in-mold coating procedure assures extended performance in greater than normal exposure to UV rays.

Standards

IEC 60529	EN 60529
EN 50102	EN 50298
IEC 60439-5	

Approvals



UL and CSA

- Cabinets with one door:
Type 3, 3R, 3S, 4, 4X, 12, 12K and 13
- Cabinets with two doors:
Type 3, 3R, 3S, 4, 4X, 12, 12K and 13
- Coupled cabinets:
Type 3, 3R, 3S, 12, 12K and 13
- RoHS European Union



FRP Polysafe Enclosures with Standard Door

Additional depths available

Up to 2 depth extensions may be added. Includes (4) stainless steel mounting feet



FEATURES

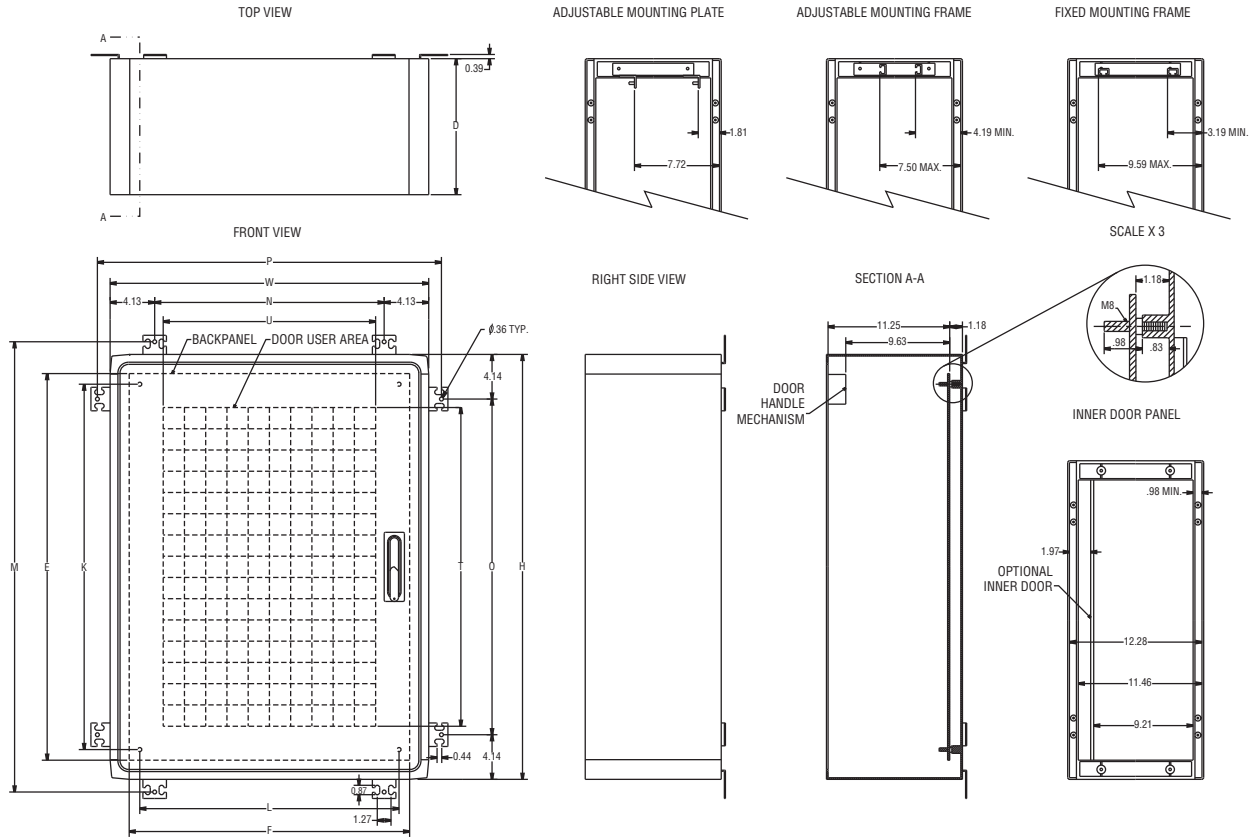
- Designed for wall mounting and free standing units
- Can be coupled in height, width, and depth
- Lexan windows are .236" thick with a neoprene gasket
- Door has a single entry five-point latching system
- Available in pedestal version
- Temperature resistance -58°F to +302°F (-50°C to +150°C)
Momentary to +392°F (200°C)

ACCESSORIES

- Key-lock cylinders and padlockable handles
- Adjustable mounting hardware
- Rainhoods
- Floorpads

Part Number	Outside Dimensions			Inside Dimensions			Weight
	H	W	D	h	w	d	
PS2020A (mm)	19.70 (500)	19.70 (500)	12.60 (320)	16.14 (410)	16.14 (410)	11.25 (286)	25 lb 11.3 kg
PS2030A (mm)	19.70 (500)	29.53 (750)	12.6 (320)	16.14 (410)	25.98 (660)	11.26 (286)	37.5 lb 17 kg
PS3020A (mm)	29.53 (750)	19.70 (500)	12.60 (320)	25.98 (660)	16.14 (410)	11.26 (286)	37.5 lb 17 kg
PS3030A (mm)	29.53 (750)	29.53 (750)	12.60 (320)	25.98 (660)	25.98 (660)	11.26 (286)	43.8 lb 19.8 kg
PS3040A (mm)	29.53 (750)	39.37 (1000)	12.60 (320)	25.98 (660)	35.83 (910)	11.26 (286)	56 lb 25.4 kg
PS3050/2A (mm)	29.53 (750)	49.21 (1250)	12.60 (320)	25.98 (660)	45.66 (1160)	11.26 (286)	69 lb 31.3 kg
PS4020A (mm)	39.37 (1000)	19.70 (500)	12.60 (320)	35.83 (910)	16.14 (410)	11.26 (286)	43.8 lb 19.8 kg
PS4030A (mm)	39.37 (1000)	29.53 (750)	12.60 (320)	35.83 (910)	25.98 (660)	11.26 (286)	56 lb 25.4 kg
PS4040A (mm)	39.37 (1000)	39.37 (1000)	12.60 (320)	35.83 (910)	35.83 (910)	11.26 (286)	69.6 lb 31.5 kg
PS4040/2A* (mm)	39.37 (1000)	39.37 (1000)	12.60 (320)	35.83 (910)	35.83 (910)	11.26 (286)	69.6 lb 31.5 kg
PS4050/2A* (mm)	39.37 (1000)	49.21 (1250)	12.60 (320)	35.83 (910)	45.67 (1160)	11.26 (286)	83.5 lb 37.8 kg
PS5030A (mm)	49.21 (1250)	29.53 (750)	12.60 (320)	45.67 (1160)	25.98 (660)	11.26 (286)	69 lb 31.3 kg
PS5040/2A* (mm)	49.21 (1250)	39.37 (1000)	12.60 (320)	45.67 (1160)	35.83 (910)	11.26 (286)	83.5 lb 37.8 kg
PS5040/2LA* (mm)	49.21 (1250)	39.37 (1000)	12.60 (320)	45.67 (1160)	35.83 (910)	11.26 (286)	83.5 lb 37.8 kg

ADDITIONAL ACCESSORIES AVAILABLE UPON REQUEST



POLYSAFE

Part Number	Outside			Interior Mounting Space			Wall Mounting				Mounting Plate		Hole Centers	
	R	W	D	T	U	d	M	N	O	P	E	F	K	L
PS2020A (mm)	19.70 (500)	19.70 (500)	12.60 (320)	9.84 (250)	9.84 (250)	11.25 (286)	21.65 (550)	21.65 (550)	11.42 (290)	11.42 (290)	16.14 (410)	16.14 (410)	14.17 (360)	14.17 (360)
PS2030A (mm)	19.70 (500)	29.53 (750)	12.60 (320)	9.84 (250)	19.70 (500)	11.25 (286)	31.50 (800)	21.65 (550)	11.42 (290)	21.26 (540)	16.14 (410)	25.98 (660)	14.17 (360)	24.02 (610)
PS3020A (mm)	29.53 (750)	19.70 (500)	12.60 (320)	19.70 (500)	9.84 (250)	11.25 (286)	21.65 (550)	31.50 (800)	21.26 (540)	11.42 (290)	25.98 (660)	16.14 (410)	24.02 (610)	14.17 (360)
PS3030A (mm)	29.53 (750)	29.53 (750)	12.60 (320)	19.70 (500)	19.70 (500)	11.25 (286)	31.50 (800)	31.50 (800)	21.26 (540)	21.26 (540)	25.98 (660)	25.98 (660)	24.02 (610)	24.02 (610)
PS3040A (mm)	29.53 (750)	39.37 (1000)	12.60 (320)	19.70 (500)	29.53 (750)	11.25 (286)	41.34 (1050)	31.50 (800)	21.26 (540)	31.10 (790)	25.98 (660)	35.83 (910)	24.02 (610)	33.86 (860)
PS3050/2A* (mm)	29.53 (750)	49.21 (1250)	12.60 (320)	19.70 (500)	9.84/19.70 (250/500)	11.25 (286)	51.18 (1300)	31.50 (800)	21.26 (540)	40.94 (1040)	25.98 (660)	45.66 (1160)	24.02 (610)	43.70 (1100)
PS4020A (mm)	39.37 (1000)	19.70 (500)	12.60 (320)	33.86 (860)	9.84 (250)	11.25 (286)	21.65 (550)	41.34 (1050)	31.10 (790)	11.42 (290)	35.83 (910)	16.14 (410)	33.86 (860)	14.17 (360)
PS4030A (mm)	39.37 (1000)	29.53 (750)	12.60 (320)	29.53 (750)	19.70 (500)	11.25 (286)	31.50 (800)	41.34 (1050)	31.10 (790)	21.26 (540)	35.83 (910)	25.98 (660)	33.86 (860)	24.02 (610)
PS4040A (mm)	39.37 (1000)	39.37 (1000)	12.60 (320)	29.53 (750)	29.53 (750)	11.25 (286)	41.34 (1050)	41.31 (1050)	31.10 (790)	31.10 (790)	35.83 (910)	35.83 (910)	33.86 (860)	33.86 (860)
PS4040/2A* (mm)	39.37 (1000)	39.37 (1000)	12.60 (320)	29.53 (750)	9.84/9.84 (250/250)	11.25 (286)	41.34 (1050)	41.34 (1050)	31.10 (790)	31.10 (790)	35.83 (910)	35.83 (910)	33.86 (860)	33.86 (860)
PS4050/2A* (mm)	39.37 (1000)	49.21 (1250)	12.60 (320)	29.53 (750)	9.84/19.70 (250/500)	11.25 (286)	51.18 (1300)	41.34 (1050)	31.10 (790)	40.94 (1040)	35.83 (910)	45.67 (1160)	33.86 (860)	43.70 (1100)
PS5030A (mm)	49.21 (1250)	29.53 (750)	12.60 (320)	39.37 (1000)	19.70 (500)	11.25 (286)	31.50 (800)	51.18 (1300)	40.94 (1040)	21.26 (540)	45.67 (1160)	25.98 (660)	43.70 (1110)	24.02 (610)
PS5040/2A* (mm)	49.21 (1250)	39.37 (1000)	12.60 (320)	9.84/19.70 (250/500)	29.53 (750)	11.25 (286)	41.34 (1050)	51.18 (1300)	40.94 (1040)	31.10 (790)	45.67 (1160)	35.83 (910)	43.70 (1110)	33.86 (860)
PS5040/2LA* (mm)	49.21 (1250)	39.37 (1000)	12.60 (320)	9.74/19.70 (250/500)	29.53 (750)	11.25 (286)	41.34 (1050)	51.18 (1300)	40.94 (1040)	31.10 (790)	45.67 (1160)	35.83 (910)	43.70 (1110)	33.86 (860)

* Double boor units maintain NEMA 3R rating

FRP Polysafe Enclosures with a Gasketed Window on the Door

Up to 2 depth extensions may be added. Includes (4) stainless steel mounting feet



FEATURES

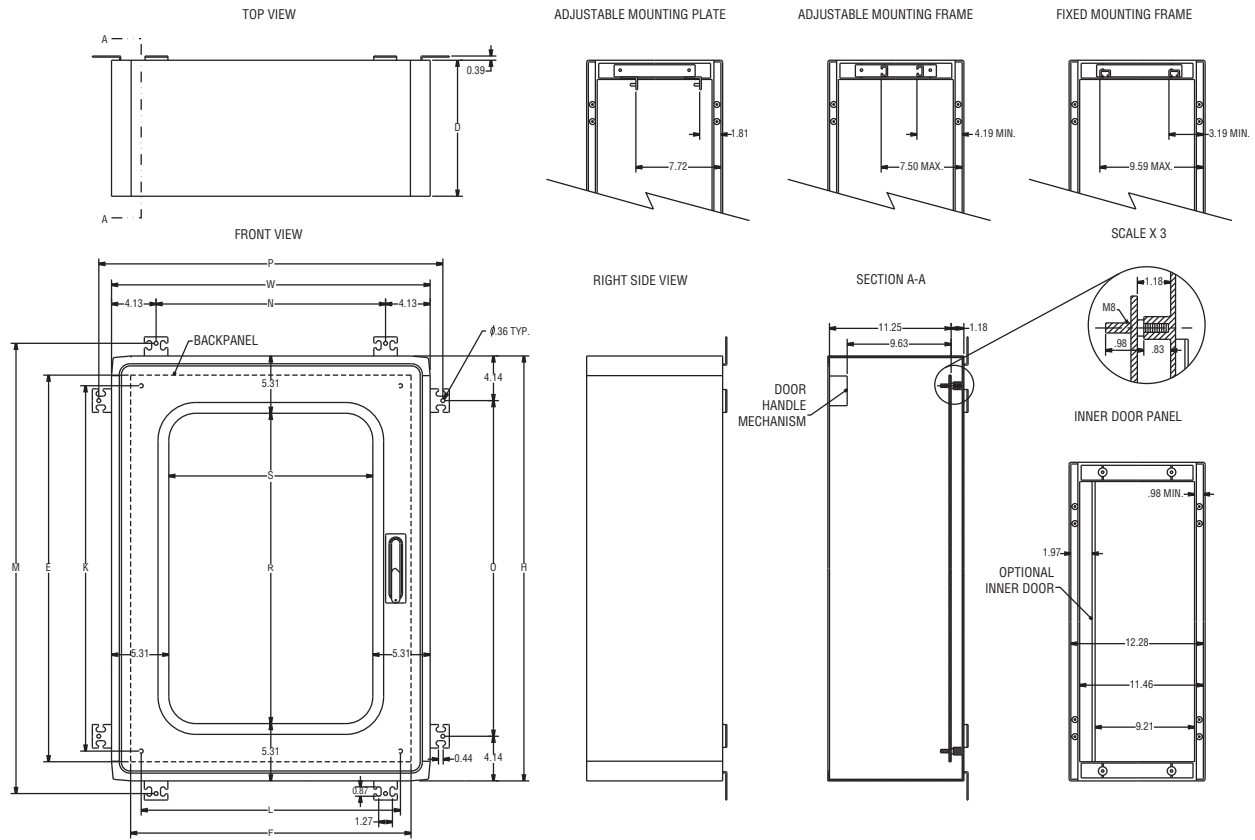
- Designed for wall mounting and free standing units
- Can be coupled in height, width, and depth
- Lexan windows are .236" thick with a neoprene gasket
- Door has a single entry five-point latching system
- Available in pedestal version
- Temperature resistance -58°F to +302°F (-50°C to +150°C)
Momentary to +392°F (200°C)

ACCESSORIES

- Key-lock cylinders and padlockable handles
- Adjustable mounting hardware
- Rainhoods
- Floorpads

Part Number	Outside Dimensions			Inside Dimensions			Weight
	H	W	D	h	w	d	
PSG2020A (mm)	19.70 (500)	19.70 (500)	12.60 (320)	16.14 (410)	16.14 (410)	11.26 (286)	25 lb 11.3 kg
PSG2030A (mm)	19.70 (500)	29.53 (750)	12.60 (320)	16.14 (410)	25.98 (660)	11.26 (286)	37.5 lb 17 kg
PSG3020A (mm)	29.53 (750)	19.70 (500)	12.60 (320)	25.98 (660)	16.14 (410)	11.26 (286)	37.5 lb 17 kg
PSG3030A (mm)	29.53 (750)	29.53 (750)	12.60 (320)	25.98 (660)	25.98 (660)	11.26 (286)	43.8 lb 19.8 kg
PSG3040A (mm)	29.53 (750)	39.37 (1000)	12.60 (320)	25.98 (660)	35.83 (910)	11.26 (286)	56 lb 25.4 kg
PSG3050/2A* (mm)	29.53 (750)	49.21 (1250)	12.60 (320)	25.98 (660)	45.66 (1160)	11.26 (286)	69 lb 31.3 kg
PSG4020A (mm)	39.37 (1000)	19.70 (500)	12.60 (320)	35.83 (910)	16.14 (410)	11.26 (286)	43.8 lb 19.8 kg
PSG4030A (mm)	39.37 (1000)	29.53 (750)	12.60 (320)	35.83 (910)	25.98 (660)	11.26 (286)	56 lb 25.4 kg
PSG4040A (mm)	39.37 (1000)	39.37 (1000)	12.60 (320)	35.83 (910)	35.83 (910)	11.25 (286)	69.6 lb 31.5 kg
PSG4040/2A* (mm)	39.37 (1000)	39.37 (1000)	12.60 (320)	35.83 (910)	35.83 (910)	11.26 (286)	69.6 lb 31.5 kg
PSG4050/2A* (mm)	39.37 (1000)	49.21 (1250)	12.60 (320)	35.83 (910)	45.67 (1160)	11.26 (286)	83.5 lb 37.8 kg
PSG5030A (mm)	49.21 (1250)	29.53 (750)	12.60 (320)	45.67 (1160)	25.98 (660)	11.26 (286)	69 lb 31.3 kg
PSG5040/2A* (mm)	49.21 (1250)	39.37 (1000)	12.60 (320)	45.67 (1160)	35.83 (910)	11.26 (286)	83.5 lb 37.8 kg
PSG5040/2LA* (mm)	49.21 (1250)	39.37 (1000)	12.60 (320)	45.67 (1160)	35.83 (910)	11.26 (286)	83.5 lb 37.8 kg

ADDITIONAL ACCESSORIES AVAILABLE UPON REQUEST



POLYSAFE

Part Number	Outside			Inside			Wall Mounting				Window	
	R	W	D	E	F	d	O	P	M	N	A	S
PSG2020A (mm)	19.70 (500)	19.70 (500)	12.60 (320)	16.14 (410)	16.14 (410)	11.26 (286)	11.42 (290)	11.42 (290)	21.65 (550)	21.65 (550)	9.06 (230)	9.06 (230)
PSG2030A (mm)	19.70 (500)	29.53 (750)	12.60 (320)	16.14 (410)	25.98 (660)	11.26 (286)	11.42 (290)	21.26 (540)	21.65 (550)	31.50 (800)	9.06 (230)	18.90 (480)
PSG3020A (mm)	29.53 (750)	19.70 (500)	12.60 (320)	25.98 (660)	16.14 (410)	11.26 (286)	21.26 (540)	11.42 (290)	31.50 (800)	21.65 (550)	18.90 (480)	9.06 (230)
PSG3030A (mm)	29.53 (750)	29.53 (750)	12.60 (320)	25.98 (660)	25.98 (660)	11.26 (286)	21.26 (540)	21.26 (540)	31.50 (800)	31.50 (800)	18.90 (480)	18.90 (480)
PSG3040A (mm)	29.53 (750)	39.37 (1000)	12.60 (320)	25.98 (660)	35.83 (910)	11.26 (286)	21.26 (540)	31.10 (790)	31.50 (800)	41.34 (1050)	18.90 (480)	28.74 (730)
PSG3050/2A* (mm)	29.53 (750)	49.21 (1250)	12.60 (320)	25.98 (660)	45.66 (1160)	11.26 (286)	21.26 (540)	40.94 (1040)	31.50 (800)	51.18 (1300)		
PSG4020A (mm)	39.37 (1000)	19.70 (500)	12.60 (320)	35.83 (910)	16.14 (410)	11.26 (286)	31.10 (790)	11.42 (290)	41.34 (1050)	21.65 (550)	28.74 (730)	9.06 (230)
PSG4030A (mm)	39.37 (1000)	29.53 (750)	12.60 (320)	35.83 (910)	25.98 (660)	11.26 (286)	31.10 (790)	21.26 (540)	41.34 (1050)	31.50 (800)	28.74 (730)	18.90 (480)
PSG4040A (mm)	39.37 (1000)	39.37 (1000)	12.60 (320)	35.83 (910)	35.83 (910)	11.26 (286)	31.10 (790)	31.10 (790)	41.34 (1050)	41.34 (1050)	28.74 (730)	28.74 (730)
PSG4040/2A* (mm)	39.37 (1000)	39.37 (1000)	12.60 (320)	35.83 (910)	35.83 (910)	11.26 (286)	31.10 (790)	31.10 (790)	41.34 (1050)	41.34 (1050)		
PSG4050/2A* (mm)	39.37 (1000)	49.21 (1250)	12.60 (320)	35.83 (910)	45.67 (1160)	11.26 (286)	31.10 (790)	40.94 (1040)	41.34 (1050)	51.18 (1300)	38.58 (980)	18.90 (480)
PSG5030A (mm)	49.21 (1250)	29.53 (750)	12.60 (320)	45.67 (1160)	25.98 (660)	11.26 (286)	40.94 (1040)	21.26 (540)	51.18 (1300)	31.50 (800)		
PSG5040/2A* (mm)	49.21 (1250)	39.37 (1000)	12.60 (320)	45.67 (1160)	35.83 (910)	11.26 (286)	40.94 (1040)	31.10 (790)	51.18 (1300)	41.34 (1050)		
PSG5040/2LA* (mm)	49.21 (1250)	39.37 (1000)	12.60 (320)	45.67 (1160)	35.83 (910)	11.26 (286)	40.94 (1040)	31.10 (790)	51.18 (1300)	41.34 (1050)		

For mounting plate dimensions (K, L, E, F) see page 195

FRP Polysafe Enclosures with a Bonded Window on the Door

Additional Depths available up to 2 depth extension may be added. Includes 4 Stainless Steel mounting feet.



FEATURES

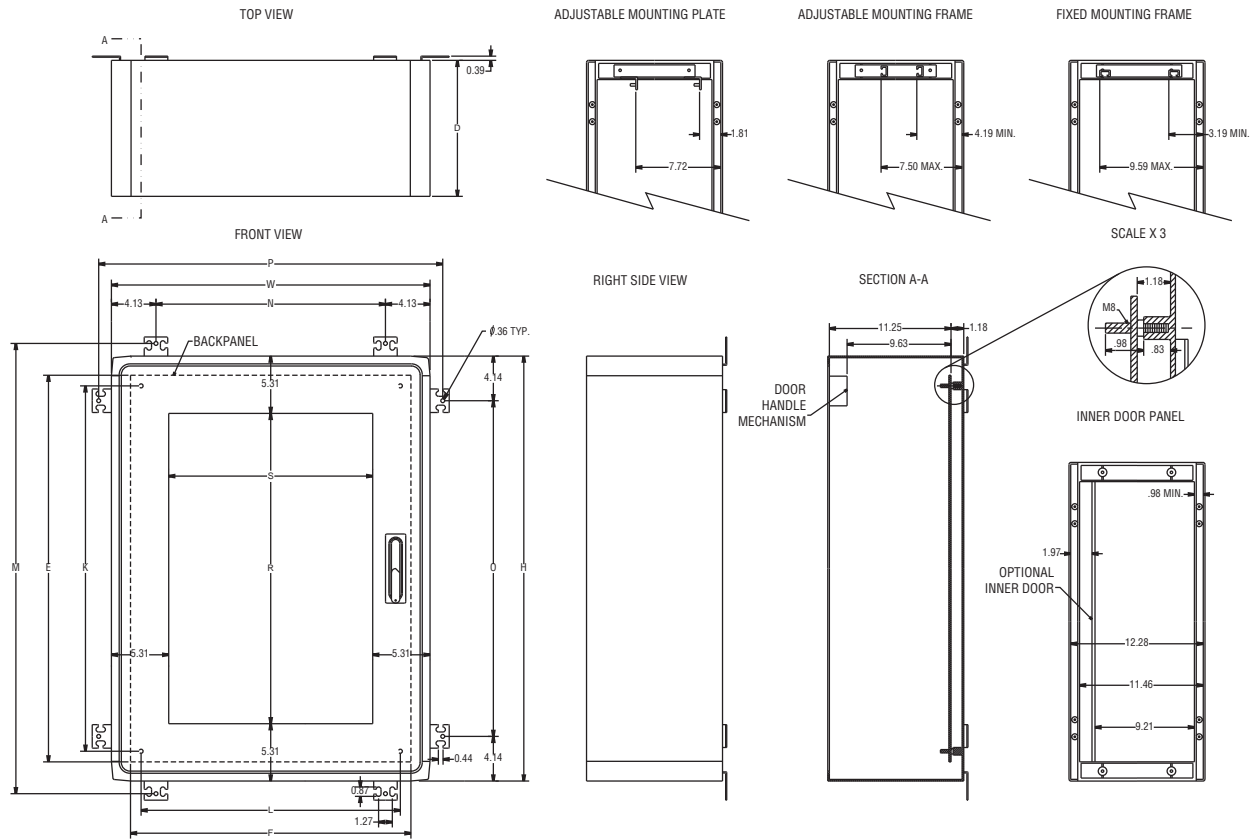
- Designed for wall mounting and free standing units
- Can be coupled in height, width, and depth
- Lexan windows are .236" thick with a neoprene gasket
- Door has a single entry five-point latching system
- Available in pedestal version
- Temperature resistance -58°F to +302°F (-50°C to +150°C)
Momentary to +392°F (200°C)

ACCESSORIES

- Key-lock cylinders and padlockable handles
- Adjustable mounting hardware
- Rainhoods
- Floorpads

Part Number	Outside Dimension			Inside Dimension			Weight
	H	W	D	h	w	d	
PSB2020A (mm)	19.70 (500)	19.70 (500)	12.60 (320)	16.14 (410)	16.14 (410)	11.26 (286)	25 lb 11.3 kg
PSB2030A (mm)	19.70 (500)	29.53 (750)	12.60 (320)	16.14 (410)	25.98 (660)	11.26 (286)	37.5 lb 17 kg
PSB3020A (mm)	29.53 (750)	19.70 (500)	12.60 (320)	25.98 (660)	16.14 (410)	11.26 (286)	37.5 lb 17 kg
PSB3030A (mm)	29.53 (750)	29.53 (750)	12.60 (320)	25.98 (660)	25.98 (660)	11.26 (286)	43.8 lb 19.8 kg
PSB3040A (mm)	29.53 (750)	39.37 (1000)	12.60 (320)	25.98 (660)	35.83 (910)	11.26 (286)	56 lb 25.4 kg
PSB3050/2A* (mm)	29.53 (750)	49.21 (1250)	12.60 (320)	25.98 (660)	45.66 (1160)	11.26 (286)	69 lb 31.3 kg
PSB4020A (mm)	39.37 (1000)	19.70 (500)	12.60 (320)	35.83 (910)	16.14 (410)	11.26 (286)	43.8 lb 19.8 kg
PSB4030A (mm)	39.37 (1000)	29.53 (750)	12.60 (320)	35.83 (910)	25.98 (660)	11.26 (286)	56 lb 25.4 kg
PSB4040A (mm)	39.37 (1000)	39.37 (1000)	12.60 (320)	35.83 (910)	35.83 (910)	11.26 (286)	69.6 lb 31.5 kg
PSB4040/2A* (mm)	39.37 (1000)	39.37 (1000)	12.60 (320)	35.83 (910)	35.83 (910)	11.26 (286)	69.6 lb 31.5 kg
PSB4050/2A* (mm)	39.37 (1000)	49.21 (1250)	12.60 (320)	35.83 (910)	45.67 (1160)	11.26 (286)	83.5 lb 37.8 kg
PSB5030A (mm)	49.21 (1250)	29.53 (750)	12.60 (320)	45.67 (1160)	25.98 (660)	11.26 (286)	69 lb 31.3 kg
PSB5040/2A* (mm)	49.21 (1250)	39.37 (1000)	12.60 (320)	45.67 (1160)	35.83 (910)	11.26 (286)	83.5 lb 37.8 kg
PSB5040/2LA* (mm)	49.21 (1250)	39.37 (1000)	12.60 (320)	45.67 (1160)	35.83 (910)	11.26 (286)	83.5 lb 37.8 kg

ADDITIONAL ACCESSORIES AVAILABLE UPON REQUEST



POLYSAFE

Part Number	Outside			Inside			Wall Mounting				Window	
	R	W	D	E	F	d	O	P	M	N	A	S
PSB2020A (mm)	19.70 (500)	19.70 (500)	12.60 (320)	16.14 (410)	16.14 (410)	11.26 (286)	11.42 (290)	11.42 (290)	21.65 (550)	21.65 (550)	9.06 (230)	9.06 (230)
PSB2030A (mm)	19.70 (500)	29.53 (750)	12.60 (320)	16.14 (410)	25.98 (660)	11.26 (286)	11.42 (290)	21.26 (540)	21.65 (550)	31.50 (800)	9.06 (230)	18.90 (480)
PSB3020A (mm)	29.53 (750)	19.70 (500)	12.60 (320)	25.98 (660)	16.14 (410)	11.26 (286)	21.26 (540)	11.42 (290)	31.50 (800)	21.65 (550)	18.90 (480)	9.06 (230)
PSB3030A (mm)	29.53 (750)	29.53 (750)	12.60 (320)	25.98 (660)	25.98 (660)	11.26 (286)	21.26 (540)	21.26 (540)	31.50 (800)	31.50 (800)	18.90 (480)	18.90 (480)
PSB3040A (mm)	29.53 (750)	39.37 (1000)	12.60 (320)	25.98 (660)	35.83 (910)	11.26 (286)	21.26 (540)	31.10 (790)	31.50 (800)	41.34 (1050)	18.90 (480)	28.74 (730)
PSB3050/2A* (mm)	29.53 (750)	49.21 (1250)	12.60 (320)	25.98 (660)	45.66 (1160)	11.26 (286)	21.26 (540)	40.94 (1040)	31.50 (800)	51.18 (1300)		
PSB4020A (mm)	39.37 (1000)	19.70 (500)	12.60 (320)	35.83 (910)	16.14 (410)	11.26 (286)	31.10 (790)	11.42 (290)	41.34 (1050)	21.65 (550)	28.74 (730)	9.06 (230)
PSB4030A (mm)	39.37 (1000)	29.53 (750)	12.60 (320)	35.83 (910)	25.98 (660)	11.26 (286)	31.10 (790)	21.26 (540)	41.34 (1050)	31.50 (800)	28.74 (730)	18.90 (480)
PSB4040A (mm)	39.37 (1000)	39.37 (1000)	12.60 (320)	35.83 (910)	35.83 (910)	11.26 (286)	31.10 (790)	31.10 (790)	41.34 (1050)	41.34 (1050)	28.74 (730)	28.74 (730)
PSB4040/2A* (mm)	39.37 (1000)	39.37 (1000)	12.60 (320)	35.83 (910)	35.83 (910)	11.26 (286)	31.10 (790)	31.10 (790)	41.34 (1050)	41.34 (1050)		
PSB4050/2A* (mm)	39.37 (1000)	49.21 (1250)	12.60 (320)	35.83 (910)	45.67 (1160)	11.26 (286)	31.10 (790)	40.94 (1040)	41.34 (1050)	51.18 (1300)	38.58 (980)	18.90 (480)
PSB5030A (mm)	49.21 (1250)	29.53 (750)	12.60 (320)	45.67 (1160)	25.98 (660)	11.26 (286)	40.94 (1040)	21.26 (540)	51.18 (1300)	31.50 (800)		
PSB5040/2A* (mm)	49.21 (1250)	39.37 (1000)	12.60 (320)	45.67 (1160)	35.83 (910)	11.26 (286)	40.94 (1040)	31.10 (790)	51.18 (1300)	41.34 (1050)		
PSB5040/2LA* (mm)	49.21 (1250)	39.37 (1000)	12.60 (320)	45.67 (1160)	35.83 (910)	11.26 (286)	40.94 (1040)	31.10 (790)	51.18 (1300)	41.34 (1050)		

For mounting plate dimensions (K, L, E, F) see page 195

Polysafe Enclosures with One Depth Extension

Part Number	H	Outside W	D	h	Inside w	d	Weight
PS2020E1A (mm)	19.70 (500)	19.70 500	25.20 640	16.14 (410)	16.14 410	22.52 572	50 lb 23 kg
PS2030E1A (mm)	19.70 (500)	29.53 750	25.20 640	16.14 (410)	25.98 660	22.52 572	75 lb 34 kg
PS3020E1A (mm)	29.53 (750)	19.70 500	25.20 640	25.98 (660)	16.14 410	22.52 572	75 lb 34 kg
PS3030E1A (mm)	29.53 (750)	29.53 750	25.20 640	25.98 (660)	25.98 660	22.52 572	87.6 lb 40 kg
PS3040E1A (mm)	29.53 (750)	39.37 1000	25.20 640	25.98 (660)	35.83 910	22.52 572	112 lb 51 kg
PS3050E1/2A* (mm)	29.53 (750)	49.21 1250	25.20 640	25.98 (660)	45.66 1160	22.52 572	112 lb 51 kg
PS4020E1A (mm)	39.37 (1000)	19.70 500	25.20 640	35.83 (910)	16.14 410	22.52 572	87.6 lb 40 kg
PS4030E1A (mm)	39.37 (1000)	29.53 750	25.20 640	35.83 (910)	25.98 660	22.52 572	112 lb 51 kg
PS4040E1A (mm)	39.37 (1000)	39.37 1000	25.20 640	35.83 (910)	35.83 910	22.52 572	138 lb 63 kg
PS4040E1/2A* (mm)	39.37 (1000)	39.37 1000	25.20 640	35.83 (910)	35.83 910	22.52 572	138 lb 63 kg
PS4050E1/2A* (mm)	39.37 (1000)	49.21 1250	25.20 640	35.83 (910)	45.67 1160	22.52 572	167 lb 76 kg
PS5030E1A (mm)	49.21 (1250)	29.53 750	25.20 640	45.67 (1160)	25.98 660	22.52 572	138 lb 63 kg
PS5040E1/2A* (mm)	49.21 (1250)	39.37 1000	25.20 640	45.67 (1160)	35.83 910	22.52 572	167 lb 76 kg
PS5040E1/2LA* (mm)	49.21 (1250)	39.37 1000	25.20 640	45.67 (1160)	35.83 910	22.52 572	167 lb 76 kg

Polysafe Enclosures with Two Depth Extensions

Part Number	H	Outside W	D	h	Inside w	d	Weight
PS2020E2A (mm)	19.70 (500)	19.70 500	37.80 960	16.14 (410)	16.14 410	33.78 858	75 lb 34 kg
PS2030E2A (mm)	19.70 (500)	29.53 750	37.80 960	16.14 (410)	25.98 660	33.78 858	112 lb 51 kg
PS3020E2A (mm)	29.53 (750)	19.70 500	37.80 960	25.98 (660)	16.14 410	33.78 858	112 lb 51 kg
PS3030E2A (mm)	29.53 (750)	29.53 750	37.80 960	25.98 (660)	25.98 660	33.78 858	131 lb 59 kg
PS3040E2A (mm)	29.53 (750)	39.37 1000	37.80 960	25.98 (660)	35.83 910	33.78 858	168 lb 76 kg
PS3050E2/2A* (mm)	29.53 (750)	49.21 1250	37.80 960	25.98 (660)	45.66 1160	33.78 858	207 lb 94 kg
PS4020E2A (mm)	39.37 (1000)	19.70 500	37.80 960	35.83 (910)	16.14 410	33.78 858	131 lb 59 kg
PS4030E2A (mm)	39.37 (1000)	29.53 750	37.80 960	35.83 (910)	25.98 660	33.78 858	168 lb 76 kg
PS4040E2A (mm)	39.37 (1000)	39.37 1000	37.80 960	35.83 (910)	35.83 910	33.78 858	209 lb 95 kg
PS4040E2/2A* (mm)	39.37 (1000)	39.37 1000	37.80 960	35.83 (910)	35.83 910	33.78 858	209 lb 95 kg
PS4050E2/2A* (mm)	39.37 (1000)	49.21 1250	37.80 960	35.83 (910)	45.67 1160	33.78 858	250 lb 114 kg
PS5030E2A (mm)	49.21 (1250)	29.53 750	37.80 960	45.67 (1160)	25.98 660	33.78 858	207 lb 94 kg
PS5040E2/2A* (mm)	49.21 (1250)	39.37 1000	37.80 960	45.67 (1160)	35.83 910	33.78 858	251 lb 114 kg
PS5040E2/2LA* (mm)	49.21 (1250)	39.37 1000	37.80 960	45.67 (1160)	35.83 910	33.78 858	251 lb 114 kg

Polysafe Enclosures with Gasketed Window on Door and One Depth Extension

Part Number	H	Outside W	D	h	Inside w	d	Weight
PSG2020E1A (mm)	19.70 (500)	19.70 500	25.20 640	16.14 (410)	16.14 410	22.52 572	50 lb 23 kg
PSG2030E1A (mm)	19.70 (500)	29.53 750	25.20 640	16.14 (410)	25.98 660	22.52 572	75 lb 34 kg
PSG3020E1A (mm)	29.53 (750)	19.70 500	25.20 640	25.98 (660)	16.14 410	22.52 572	75 lb 34 kg
PSG3030E1A (mm)	29.53 (750)	29.53 750	25.20 640	25.98 (660)	25.98 660	22.52 572	87.6 lb 40 kg
PSG3040E1A (mm)	29.53 (750)	39.37 1000	25.20 640	25.98 (660)	35.83 910	22.52 572	112 lb 51 kg
PSG3050E1/2A* (mm)	29.53 (750)	49.21 1250	25.20 640	25.98 (660)	45.66 1160	22.52 572	112 lb 51 kg
PSG4020E1A (mm)	39.37 (1000)	19.70 500	25.20 640	35.83 (910)	16.14 410	22.52 572	87.6 lb 40 kg
PSG4030E1A (mm)	39.37 (1000)	29.53 750	25.20 640	35.83 (910)	25.98 660	22.52 572	112 lb 51 kg
PSG4040E1A (mm)	39.37 (1000)	39.37 1000	25.20 640	35.83 (910)	35.83 910	22.52 572	138 lb 63 kg
PSG4040E1/2A* (mm)	39.37 (1000)	39.37 1000	25.20 640	35.83 (910)	35.83 910	22.52 572	138 lb 63 kg
PSG4050E1/2A* (mm)	39.37 (1000)	49.21 1250	25.20 640	35.83 (910)	45.67 1160	22.52 572	167 lb 76 kg
PSG5030E1A (mm)	49.21 (1250)	29.53 750	25.20 640	45.67 (1160)	25.98 660	22.52 572	138 lb 63 kg
PSG5040E1/2A* (mm)	49.21 (1250)	39.37 1000	25.20 640	45.67 (1160)	35.83 910	22.52 572	167 lb 76 kg
PSG5040E1/2LA* (mm)	49.21 (1250)	39.37 1000	25.20 640	45.67 (1160)	35.83 910	22.52 572	167 lb 76 kg

Polysafe Enclosures with Gasketed Window on Door and Two Depth Extensions

Part Number	H	Outside W	D	h	Inside w	d	Weight
PSG2020E2A (mm)	19.70 (500)	19.70 500	37.80 960	16.14 (410)	16.14 410	33.78 858	75 lb 34 kg
PSG2030E2A (mm)	19.70 (500)	29.53 750	37.80 960	16.14 (410)	25.98 660	33.78 858	112 lb 51 kg
PSG3020E2A (mm)	29.53 (750)	19.70 500	37.80 960	25.98 (660)	16.14 410	33.78 858	112 lb 51 kg
PSG3030E2A (mm)	29.53 (750)	29.53 750	37.80 960	25.98 (660)	25.98 660	33.78 858	131 lb 59 kg
PSG3040E2A (mm)	29.53 (750)	39.37 1000	37.80 960	25.98 (660)	35.83 910	33.78 858	168 lb 76 kg
PSG3050E2/2A* (mm)	29.53 (750)	49.21 1250	37.80 960	25.98 (660)	45.66 1160	33.78 858	207 lb 94 kg
PSG4020E2A (mm)	39.37 (1000)	19.70 500	37.80 960	35.83 (910)	16.14 410	33.78 858	131 lb 59 kg
PSG4030E2A (mm)	39.37 (1000)	29.53 750	37.80 960	35.83 (910)	25.98 660	33.78 858	168 lb 76 kg
PSG4040E2A (mm)	39.37 (1000)	39.37 1000	37.80 960	35.83 (910)	35.83 910	33.78 858	209 lb 95 kg
PSG4040E2/2A* (mm)	39.37 (1000)	39.37 1000	37.80 960	35.83 (910)	35.83 910	33.78 858	209 lb 95 kg
PSG4050E2/2A* (mm)	39.37 (1000)	49.21 1250	37.80 960	35.83 (910)	45.67 1160	33.78 858	250 lb 114 kg
PSG5030E2A (mm)	49.21 (1250)	29.53 750	37.80 960	45.67 (1160)	25.98 660	33.78 858	207 lb 94 kg
PSG5040E2/2A* (mm)	49.21 (1250)	39.37 1000	37.80 960	45.67 (1160)	35.83 910	33.78 858	251 lb 114 kg
PSG5040E2/2LA* (mm)	49.21 (1250)	39.37 1000	37.80 960	45.67 (1160)	35.83 910	33.78 858	251 lb 114 kg

Polysafe Enclosures with Bonded Window on Door and One Depth Extension

Part Number	H	Outside W	D	h	Inside w	d	Weight
PSB2020E1A (mm)	19.70 (500)	19.70 500	25.20 (640)	16.14 (410)	16.14 410	22.52 (572)	50 lb 23 kg
PSB2030E1A (mm)	19.70 (500)	29.53 750	25.20 (640)	16.14 (410)	25.98 660	22.52 (572)	75 lb 34 kg
PSB3020E1A (mm)	29.53 (750)	19.70 500	25.20 (640)	25.98 (660)	16.14 410	22.52 (572)	75 lb 34 kg
PSB3030E1A (mm)	29.53 (750)	29.53 750	25.20 (640)	25.98 (660)	25.98 660	22.52 (572)	87.6 lb 40 kg
PSB3040E1A (mm)	29.53 (750)	39.37 1000	25.20 (640)	25.98 (660)	35.83 910	22.52 (572)	112 lb 51 kg
PSB3050E1/2A* (mm)	29.53 (750)	49.21 1250	25.20 (640)	25.98 (660)	45.66 1160	22.52 (572)	112 lb 51 kg
PSB4020E1A (mm)	39.37 (1000)	19.70 500	25.20 (640)	35.83 (910)	16.14 410	22.52 (572)	87.6 lb 40 kg
PSB4030E1A (mm)	39.37 (1000)	29.53 750	25.20 (640)	35.83 (910)	25.98 660	22.52 (572)	112 lb 51 kg
PSB4040E1A (mm)	39.37 (1000)	39.37 1000	25.20 (640)	35.83 (910)	35.83 910	22.52 (572)	138 lb 63 kg
PSB4040E1/2A* (mm)	39.37 (1000)	39.37 1000	25.20 (640)	35.83 (910)	35.83 910	22.52 (572)	138 lb 63 kg
PSB4050E1/2A* (mm)	39.37 (1000)	49.21 1250	25.20 (640)	35.83 (910)	45.67 1160	22.52 (572)	167 lb 76 kg
PSB5030E1A (mm)	49.21 (1250)	29.53 750	25.20 (640)	45.67 (1160)	25.98 660	22.52 (572)	138 lb 63 kg
PSB5040E1/2A* (mm)	49.21 (1250)	39.37 1000	25.20 (640)	45.67 (1160)	35.83 910	22.52 (572)	167 lb 76 kg
PSB5040E1/2LA* (mm)	49.21 (1250)	39.37 1000	25.20 (640)	45.67 (1160)	35.83 910	22.52 (572)	167 lb 76 kg

Polysafe Enclosures with Bonded Window on Door and Two Depth Extensions

Part Number	H	Outside W	D	h	Inside w	d	Weight
PSB2020E2A (mm)	19.70 (500)	19.70 500	37.80 (960)	16.14 (410)	16.14 410	33.78 (858)	75 lb 34 kg
PSB2030E2A (mm)	19.70 (500)	29.53 750	37.80 (960)	16.14 (410)	25.98 660	33.78 (858)	112 lb 51 kg
PSB3020E2A (mm)	29.53 (750)	19.70 500	37.80 (960)	25.98 (660)	16.14 410	33.78 (858)	112 lb 51 kg
PSB3030E2A (mm)	29.53 (750)	29.53 750	37.80 (960)	25.98 (660)	25.98 660	33.78 (858)	131 lb 59 kg
PSB3040E2A (mm)	29.53 (750)	39.37 1000	37.80 (960)	25.98 (660)	35.83 910	33.78 (858)	168 lb 76 kg
PSB3050E2/2A* (mm)	29.53 (750)	49.21 1250	37.80 (960)	25.98 (660)	45.66 1160	33.78 (858)	207 lb 94 kg
PSB4020E2A (mm)	39.37 (1000)	19.70 500	37.80 (960)	35.83 (910)	16.14 410	33.78 (858)	131 lb 59 kg
PSB4030E2A (mm)	39.37 (1000)	29.53 750	37.80 (960)	35.83 (910)	25.98 660	33.78 (858)	168 lb 76 kg
PSB4040E2A (mm)	39.37 (1000)	39.37 1000	37.80 (960)	35.83 (910)	35.83 910	33.78 (858)	209 lb 95 kg
PSB4040E2/2A* (mm)	39.37 (1000)	39.37 1000	37.80 (960)	35.83 (910)	35.83 910	33.78 (858)	209 lb 95 kg
PSB4050E2/2A* (mm)	39.37 (1000)	49.21 1250	37.80 (960)	35.83 (910)	45.67 1160	33.78 (858)	250 lb 114 kg
PSB5030E2A (mm)	49.21 (1250)	29.53 750	37.80 (960)	45.67 (1160)	25.98 660	33.78 (858)	207 lb 94 kg
PSB5040E2/2A* (mm)	49.21 (1250)	39.37 1000	37.80 (960)	45.67 (1160)	35.83 910	33.78 (858)	251 lb 114 kg
PSB5040E2/2LA* (mm)	49.21 (1250)	39.37 1000	37.80 (960)	45.67 (1160)	35.83 910	33.78 (858)	251 lb 114 kg