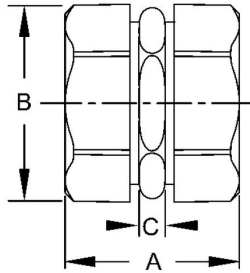


**EMT COMPRESSION COUPLINGS - DIE CAST ZINC**

Compression Couplings Die Cast Zinc

B14



Catalog #: 2824

APPLICATIONS

For use to couple two ends of EMT conduit.
 RACO Compression couplings are suitable for applications above 600V

PRODUCT FEATURES

1/2 in. to 4 in. couplings provide concrete-tight connections
 Rugged metallic construction provides mechanical protection for the raceway
 Hex compression nuts assure easy wrench installation

UL LISTED

File E 195970

CSA

C22.2 No. 18

COMPLIANCES

MSDS
[www.hubbell-rtb.com/certifications/Hubbell-RACO MSDS for WP Boxes and Fittings, January 2015.pdf](http://www.hubbell-rtb.com/certifications/Hubbell-RACO%20MSDS%20for%20WP%20Boxes%20and%20Fittings,%20January%202015.pdf)

GENERAL PRODUCT INFORMATION

Trade Size: 1 in.

DRAWING DIMENSIONS

Dimension A: 1-53/64 in.
 Dimension B: 1-13/32 in.
 Dimension C: 13/32 in.

PACKAGING

Package Type: Carton
 Std. Pkg.: 50
 Ship Carton Qty.: 200
 Product UPC-A Labeled: No
 Weight (Lbs. Per/C): 27.80
 Ship Carton Length (in.): 19.00
 Ship Carton Width (in.): 10.95
 Ship Carton Height (in.): 8.00
 Ctn Weight (Lbs.): 55.60
 UPC Number: 050169028247
 I2of5: 50050169028242