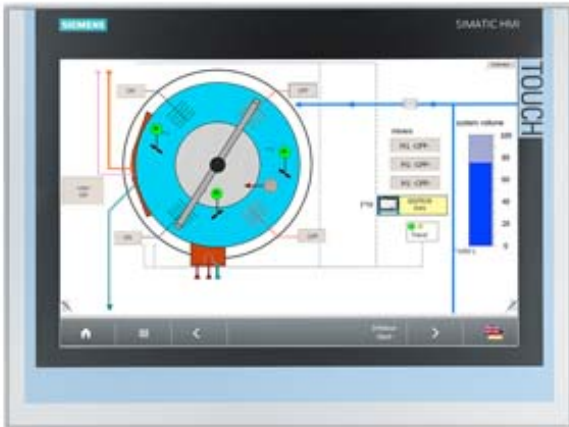


SIMATIC IFP1500 Flat Panel 15" display (16:10), Touch, Standard up to 5 m, 1280x 800 pixels, for 24 V DC, display port/DVI interface incl. DVI/USB cable 1.8 m



General information	
Product type designation	IFP1500
Short designation	Flat Panel 15" touch
Display	
Design of display	TFT widescreen display, LED backlighting
Screen diagonal	15.4 in
Screen diagonal [cm]	40 cm
Display width	331.2 mm
Display height	207 mm
Viewing angle	170° x 170°
On Screen Display (OSD) configuration	No; Adjustable by means of software
Number of colors	16 777 216; 24 bit
Resolution (pixels)	
• Horizontal image resolution	1 280 Pixel
• Vertical image resolution	800 Pixel
• Pixel size, horizontal	0.259 mm
• Pixel size, vertical	0.259 mm
General features	

• Detachable from computer unit	5 m
• Brightness/contrast	400 cd/m <sup>2</sup> / 1 000:1
• Luminance	400 cd/m <sup>2</sup>
<b>Backlighting</b>	
• Type of backlighting	LED
• MTBF backlighting (at 25 °C)	50 000 h; At 25°C
• Backlight dimmable	Yes; 0-100 %
<b>Control elements</b>	
<b>Input device</b>	
• Integrated mouse cursor control	No
<b>Keyboard fonts</b>	
• Function keys	No
— Number of function keys	0
<b>Touch operation</b>	
• Design as touch screen	Yes; Analog-resistive
• Monitor keyboard	Yes
<b>Installation type/mounting</b>	
Built-in unit	Yes; Portrait mode possible
maximum permitted forward tilt angle from vertical	35°
maximum permitted backward tilt angle from vertical	35°
<b>Supply voltage</b>	
Type of supply voltage	DC
Rated value (DC)	24 V
permissible range, lower limit (DC)	19.2 V
permissible range, upper limit (DC)	28.8 V
<b>Power loss</b>	
Power loss, typ.	40 W
Power loss, max.	65 W
<b>Interfaces</b>	
<b>Video interfaces</b>	
• DVI-D	Yes
• DisplayPort	Yes; DisplayPort V1.1
<b>Touch interfaces</b>	
• USB	Yes
<b>Degree and class of protection</b>	
IP (at the front)	IP65
IP65 at front	Yes
Enclosure Type 4 at the front	Yes
NEMA4 at the front	No
NEMA4X at the front	No

IP20 rear	Yes
<b>Standards, approvals, certificates</b>	
CE mark	Yes
cULus	Yes; Corresponds to UL 508
RCM (formerly C-TICK)	Yes
KC approval	Yes
<b>Use in hazardous areas</b>	
• FM Class I Division 2	Yes
<b>Ambient conditions</b>	
<b>Ambient temperature during operation</b>	
• min.	0 °C
• max.	50 °C; Vertical installation (horizontal)
<b>Ambient temperature during storage/transportation</b>	
• min.	-20 °C
• max.	60 °C
<b>Relative humidity</b>	
• Operation, max.	95 %; no condensation
<b>Vibrations</b>	
• Vibration load in operation	1 gn
• Vibration load during transport/storage	1 gn
<b>Shock testing</b>	
• Shock load during operation	15 gn
• Shock load during transport/storage	15 gn
<b>Mechanics/material</b>	
<b>Enclosure material (front)</b>	
• Aluminum	Yes
<b>Dimensions</b>	
Width of the housing front	415 mm
Height of housing front	310 mm
Mounting cutout, width	396 mm; Tolerance: +1 mm
Mounting cutout, height	291 mm; Tolerance: +1 mm
Overall depth	62.5 mm
<b>Weights</b>	
Weight without packaging	3.9 kg
Weight incl. packaging	5 kg
<b>last modified:</b>	08/15/2019