

SIMATIC Flat Panel pro 19-inch touch TFT screen with 1280x 1024 pixels resolution 24 V DC/230 V AC combined VGA, DVI-D interface, can be placed up to 30 m away Fully enclosed acc. to IP65, Enclosure type 4

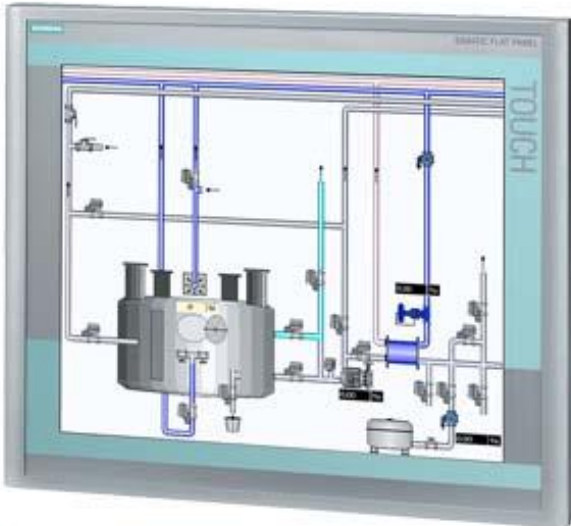


Figure similar

General information	
Product type designation	PRO
Display	
Design of display	TFT
Screen diagonal	19 in
Display width	376.3 mm
Display height	301.1 mm
Viewing angle	160° x 160°
On Screen Display (OSD) configuration	Yes
Number of colors	16 000 000; 16.7 million
Resolution (pixels)	
• Horizontal image resolution	1 280 Pixel
• Vertical image resolution	1 024 Pixel
General features	
• Brightness/contrast	> 300 cd/m ² / 300:1
Control elements	

Control elements	Touch
Input device	
• Integrated mouse cursor control	No
Keyboard fonts	
• Function keys	No
— Number of function keys	0
Touch operation	
• Design as touch screen	Yes
Installation type/mounting	
VESA mounting	Yes
Supply voltage	
Type of supply voltage	AC/DC
permissible range, lower limit (DC)	19.2 V
permissible range, upper limit (DC)	28.8 V
permissible range, lower limit (AC)	90 V
permissible range, upper limit (AC)	264 V
Interfaces	
Video interfaces	
• analog video signal (VGA)	Yes
Degree and class of protection	
IP (at the front)	IP65
IP54 at front	Yes
IP65 at front	Yes
IP65 rear	Yes
Standards, approvals, certificates	
UL approval	Yes
EAC (formerly Gost-R)	No
SIBE safety certification	No
Marine approval	
• Germanischer Lloyd (GL)	No
• American Bureau of Shipping (ABS)	No
• Bureau Veritas (BV)	No
• Det Norske Veritas (DNV)	No
• Lloyds Register of Shipping (LRS)	No
• Polski Rejestr Statkow (PRS)	No
Dimensions	
Width of the housing front	483 mm
Height of housing front	400 mm
Overall depth	112.5 mm

last modified:

11/25/2019