

# FITTINGS

## CUP/PLUG SERIES



### THREADED INSERT PLUGS RECESSED STYLE



Recessed Plug  
Cup - 375 to 6  
Plug 375 to 3



Recessed Plug  
Cup - 7 to 8  
Plug 7 to 10



Recessed Plug  
Plug 4 to 6



Recessed Plug  
Plug - 9 to 0

Class I, Groups A,B,C,D  
Class I, Zone 1, Groups IIC, IIB, IA  
Class II, Groups E,F,G  
Class III

UL Standards 886 and 1203  
CSA Standard: C22.2 No. 30

UL LISTED File No. E 10514

SP Certified File No. LR11716

### FEATURES-SPECIFICATIONS

#### Application

- To close up a tapped hole or hub

#### Features

- Threaded hubs (NPT)

#### Material/Finish

**Copper-free Aluminum** – 3/8" - 4"  
(less than 4/10 of 1%)

- Natural Finish

**Steel** – 1/2" - 1"

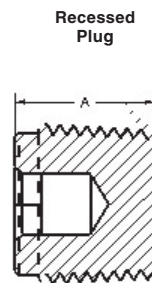
- Zinc Plated

**Iron** – 1-1/4" - 4"

- Zinc Plated

RECESSED PLUG - KILLARK ALUMINUM				
CATALOG NUMBER	HUB SIZE	THREAD SPECIFICATION	PLUG LENGTH A	RECESS DRIVE SIZE
CUP-375	3/8"	3/8"- 18 NPT	37/64" (14.7)	1/4" Allen key
CUP-1	1/2"	1/2"- 14 NPT	19/32" (15.1)	3/8" Allen key
CUP-2	3/4"	3/4"- 14 NPT	19/32" (15.1)	3/8" Allen key
CUP-3	1"	1"- 11-1/2 NPT	5/8" (15.9)	3/8" Allen key
CUP-4	1-1/4"	1-1/4"- 11-1/2 NPT	1" (25.4)	1/2" Allen key
CUP-5	1-1/2"	1-1/2"- 11-1/2 NPT	1" (25.4)	1/2" Allen key
CUP-6	2"	2"- 11-1/2 NPT	1" (25.4)	1/2" Allen key
CUP-7	2-1/2"	2-1/2"- 8 NPT	1-5/32" (29.4)	1/4" Slot
CUP-8	3"	3"- 8 NPT	1-5/32" (29.4)	1/4" Slot
CUP-9	3-1/2"	3-1/2"- 8 NPT	1-5/16" (33.3)	Pry Tabs
CUP-0	4"	4"- 8 NPT	1-5/16" (33.3)	Pry Tabs

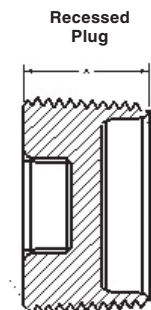
RECESSED PLUG - STEEL/IRON				
CATALOG NUMBER	HUB SIZE	THREAD SPECIFICATION	PLUG LENGTH A	RECESS DRIVE SIZE
PLUG375	3/8"	3/8"- 18 NPT	37/64" (14.7)	1/4" Allen key
PLUG1	1/2"	1/2"- 14 NPT	19/32" (15.1)	1/4" Allen key
PLUG2	3/4"	3/4"- 14 NPT	19/32" (15.1)	5/16" Allen key
PLUG3	1"	1"- 11-1/2 NPT	5/8" (15.9)	3/8" Allen key
PLUG4	1-1/4"	1-1/4"- 11-1/2 NPT	1" (25.4)	3/4" Square
PLUG5	1-1/2"	1-1/2"- 11-1/2 NPT	1" (25.4)	3/4" Square
PLUG6	2"	2"- 11-1/2 NPT	1" (25.4)	3/4" Square
PLUG7	2-1/2"	2-1/2"- 8 NPT	1-5/32" (29.4)	1/4" Slot
PLUG8	3"	3"- 8 NPT	1-5/32" (29.4)	1/4" Slot
PLUG9	3-1/2"	3-1/2"- 8 NPT	1-5/16" (33.3)	1/4" Slot
PLUG10	4"	4"- 8 NPT	1-5/16" (33.3)	1/4" Slot



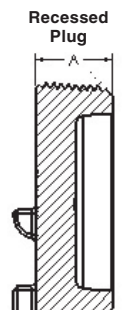
CUP-375 to 6  
PLUG 375 to 3



CUP-7 to 8  
PLUG 7 to 10



PLUG 4 to 6



CUP-9 to 0



CUP/PLUG SERIES

# KILLARK

## THREADED INSERT PLUGS RECESSED STYLE



Recessed Plug  
Cup - 375 to 6  
Plug 375 to 3



Recessed Plug  
Cup - 7 to 8  
Plug 7 to 10



Recessed Plug  
Plug 4 to 6



Global Listings

**ATEX / IEC Ex Certified**

File nos. SIRA 13ATEX1196U Issue: 1

- Ex II 2 G D
- Ex d IIC Gb
- Ex e IIC Gb
- Ex tb IIIC Db
- Ta = -50°C to +60°C

File nos. IECEx SIR 13.0073U Issue: 1

- Ex d IIC Gb
- EX e IIC Gb
- EX tb IIIC Db
- Ta = -50°C to +60°C

LISTED File No. E 10514

Certified File No. LR11716

**FEATURES-SPECIFICATIONS**

**Application**

- To close up a tapped hole or hub

**Features**

- Threaded hubs (NPT)

**Material/Finish**

**Copper-free Aluminum** – 3/8" - 4"  
(less than 4/10 of 1%)

- Natural Finish

**Steel** – 1/2" - 1"

- Zinc Plated

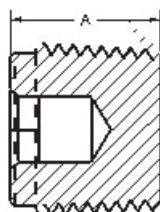
**Iron** – 1-1/4" - 4"

- Zinc Plated

RECESSED PLUG - KILLARK ALUMINUM				
CATALOG NUMBER	HUB SIZE	THREAD SPECIFICATION	PLUG LENGTH A	RECESS DRIVE SIZE
CUP-1-EX	1/2"	1/2"- 14 NPT	19/32" (15.1)	3/8" Allen key
CUP-2-EX	3/4"	3/4"- 14 NPT	19/32" (15.1)	3/8" Allen key
CUP-3-EX	1"	1"- 11-1/2 NPT	5/8" (15.9)	3/8" Allen key
CUP-4-EX	1-1/4"	1-1/4"- 11-1/2 NPT	1" (25.4)	1/2" Allen key
CUP-5-EX	1-1/2"	1-1/2"- 11-1/2 NPT	1" (25.4)	1/2" Allen key
CUP-6-EX	2"	2"- 11-1/2 NPT	1" (25.4)	1/2" Allen key
CUP-7-EX	2-1/2"	2-1/2"- 8 NPT	1-5/32" (29.4)	1/4" Slot
CUP-8-EX	3"	3"- 8 NPT	1-5/32" (29.4)	1/4" Slot

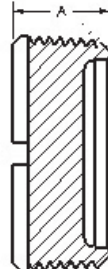
RECESSED PLUG - STEEL/IRON				
CATALOG NUMBER	HUB SIZE	THREAD SPECIFICATION	PLUG LENGTH A	RECESS DRIVE SIZE
PLUG1-EX	1/2"	1/2"- 14 NPT	19/32" (15.1)	1/4" Allen key
PLUG2-EX	3/4"	3/4"- 14 NPT	19/32" (15.1)	5/16" Allen key
PLUG3-EX	1"	1"- 11-1/2 NPT	5/8" (15.9)	3/8" Allen key
PLUG4-EX	1-1/4"	1-1/4"- 11-1/2 NPT	1" (25.4)	3/4" Square
PLUG5-EX	1-1/2"	1-1/2"- 11-1/2 NPT	1" (25.4)	3/4" Square
PLUG6-EX	2"	2"- 11-1/2 NPT	1" (25.4)	3/4" Square
PLUG7-EX	2-1/2"	2-1/2"- 8 NPT	1-5/32" (29.4)	1/4" Slot
PLUG8-EX	3"	3"- 8 NPT	1-5/32" (29.4)	1/4" Slot
PLUG9-EX	3-1/2"	3-1/2"- 8 NPT	1-5/16" (33.3)	1/4" Slot
PLUG10-EX	4"	4"- 8 NPT	1-5/16" (33.3)	1/4" Slot

Recessed Plug



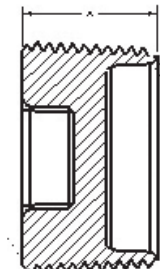
CUP-375 to 6  
PLUG 375 to 3

Recessed Plug



CUP-7 to 8  
PLUG 7 to 10

Recessed Plug



PLUG 4 to 6

# FITTINGS

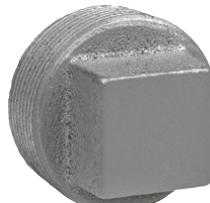
## CUP/PLUG SERIES



### THREADED INSERT PLUGS SQUARE HEAD STYLE



Square Head Plug  
Cup-250 to 0



Square Head Plug  
PLUG1-SQ to 10SQ

**Class I Groups A,B,C,D**  
**Class I, Zone 1, Groups IIC, IIB, IA**  
**Class II Groups E,F,G**  
**Class III**

UL Standards 886 and 1203  
CSA Standard: C22.2 No. 30

LISTED Listed File No. E 10514

Certified File No. LR11716

#### FEATURES-SPECIFICATIONS

##### Application

- To close up a tapped hole or hub

##### Features

- Threaded hubs (NPT)

##### Material/Finish

**Copper-free Aluminum** – 1/4" - 4"  
(less than 4/10 of 1%)

- Natural Finish

**Steel** – 1/2" - 1"

- Zinc Plated

**Iron** – 1-1/4" - 4"

- Zinc Plated

For recessed style plugs see previous page.

SQUARE HEAD PLUG (EXTERNAL HEAD) - KILLARK ALUMINUM				
CATALOG NUMBER	HUB SIZE	THREAD SPECIFICATION	PLUG LENGTH A	HEAD SIZE
CUPX-250	1/4"	1/4"- 18 NPT	51/64" (20.2)	3/8" (9.5)
CUPX-1	1/2"	1/2"- 14 NPT	1/64" (25.8)	1/2" (12.7)
CUPX-2	3/4"	3/4"- 14 NPT	1-5/32" (29.4)	5/8" (15.9)
CUPX-3	1"	1"- 11-1/2 NPT	21/64" (33.7)	13/16" (20.6)
CUPX-4	1-1/4"	1-1/4"- 11-1/2 NPT	1-3/8" (34.9)	15/16" (23.8)
CUPX-5	1-1/2"	1-1/2"- 11-1/2 NPT	1-13/16" (46.0)	1-1/8" (28.6)
CUPX-6	2"	2"- 11-1/2 NPT	1-49/64" (44.8)	1-5/16" (33.3)
CUPX-7	2-1/2"	2-1/2"- 8 NPT	1-27/32" (46.8)	1-5/8" (41.3)
CUPX-8	3"	3"- 8 NPT	1-27/32" (46.8)	2" (50.8)
CUPX-9	3-1/2"	3-1/2"- 8 NPT	2" (50.8)	2-1/2" (63.5)
CUPX-0	4"	4"- 8 NPT	2" (50.8)	2-1/2" (63.5)

SQUARE HEAD PLUG (EXTERNAL HEAD) - STEEL/IRON				
CATALOG NUMBER	HUB SIZE	THREAD SPECIFICATION	PLUG LENGTH A	RECESS DRIVE SIZE
PLUG1-SQ	1/2"	1/2"- 14 NPT	61/64" (24.2)	35/64" (13.9)
PLUG2-SQ	3/4"	3/4"- 14 NPT	1-3/32" (27.7)	5/8" (15.9)
PLUG3-SQ	1"	1"- 11-1/2 NPT	1-17/64" (32.1)	13/16" (20.6)
PLUG4-SQ	1-1/4"	1-1/4"- 11-1/2 NPT	1-7/16" (36.4)	15/16" (23.8)
PLUG5-SQ	1-1/2"	1-1/2"- 11-1/2 NPT	1-15/32" (37.3)	1-1/8" (28.6)
PLUG6-SQ	2"	2"- 11-1/2 NPT	1-21/32" (42.1)	1-5/16" (33.3)
PLUG7-SQ	2-1/2"	2-1/2"- 8 NPT	1-27/32" (46.8)	1-5/8" (41.3)
PLUG8-SQ	3"	3"- 8 NPT	1-27/32" (46.8)	2" (50.8)
PLUG9-SQ	3-1/2"	3-1/2"- 8 NPT	2" (50.8)	2-1/2" (63.5)
PLUG10-SQ	4"	4"- 8 NPT	2" (50.8)	2-1/2" (63.5)

