

## Single Pole Devices and Temporary Power

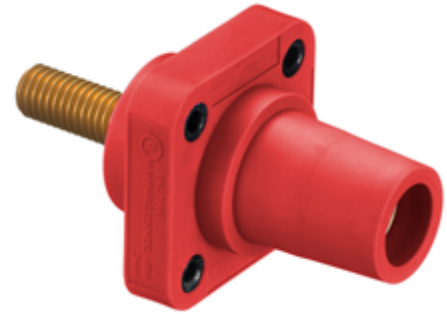
400A, 600V AC/250V DC

## Stud Type Female Receptacles

# HUBBELL

### Ordering Information

Description	Device Color	UPC	Catalog Number
400 A, Panel Mount, thermoplastic elastomer, mates with 300 and 400A plugs	Red	783585093604	HBLFRSCR

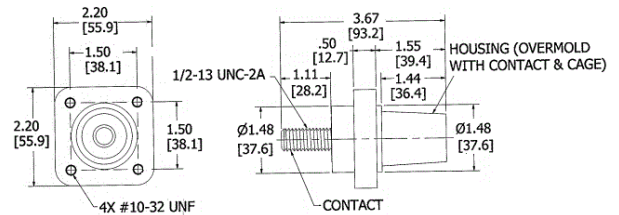


### Standards

UL and cUL Listed  
UL Enclosure Types 3R, 4X, 12  
National Electric Code (NEC), ANSI/NFPA 70

### Specifications

Base Compound	Thermoplastic Elastomer
Contact Material	Brass
Retaining Screw Material	Nylon
Mounting Hole	4x $\varnothing$ .20"
Termination	1/2-13 UNC-2A Threaded Stud



### Performance

Electrical	
Amperage Rating	400A Maximum
Voltage Ratings	600V AC Maximum; 250V DC Maximum

Mechanical	
Product Identification	Ratings are a permanent part of device
Terminal Accommodation	#4 to 4/0 AWG

Environmental	
Flammability	HB per UL94 or CSA 22.2. 0.17

### Online Resources

Customer Use Drawing  
eCatalog  
Installation Instructions

Dimensions in Inches (mm)

Hubbell Wiring Device-Kellems • Hubbell Incorporated (Delaware) • 40 Waterview Drive • Shelton, CT 06484

Phone (800) 288-6000 • Fax (800) 255-1031 • Specifications subject to change without notice.

