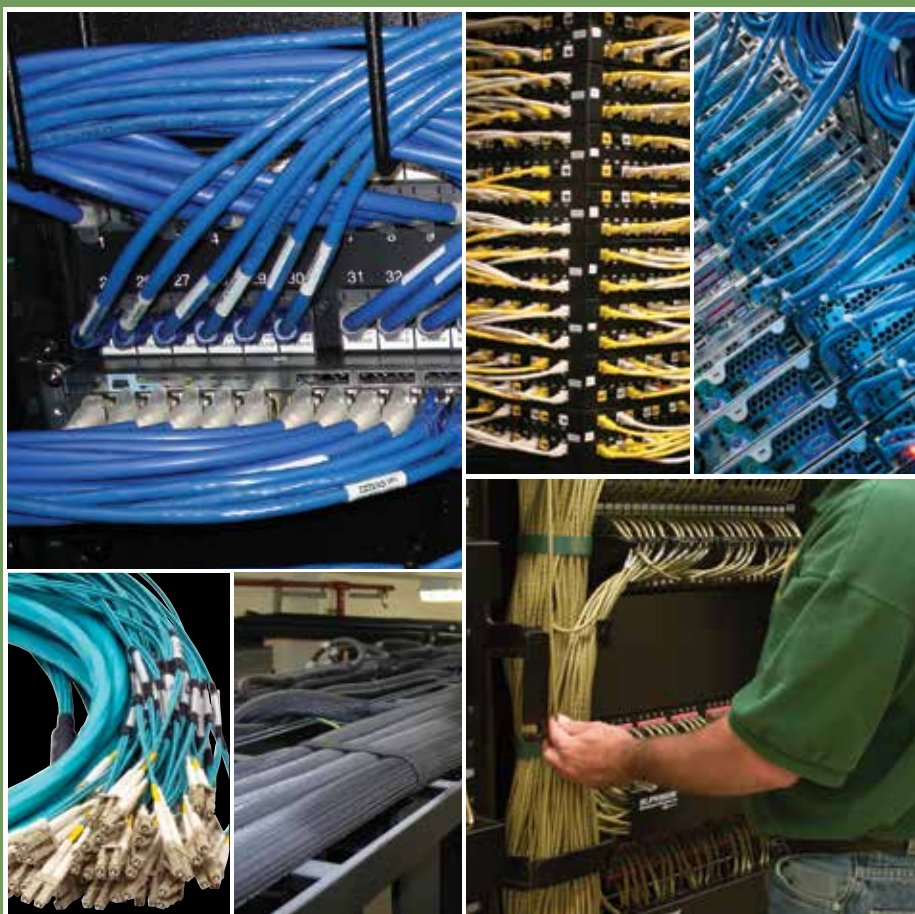




COPPER | Assemblies

Hubbell cable assemblies are manufactured with top quality components and are tuned with Hubbell jacks, patch panels and cable, creating a superior end-to-end system. Hubbell Patch Cords are constructed with high performance patch cable and are 100% performance tested, assuring the highest quality, most reliable patch cord in the industry.





COPPER | Assemblies

BIDnet Pre-Terminated Copper Trunk Assemblies	D3
NEXTSPEED® Ascent Category 6A Patch Cords	D4
NEXTSPEED® Ascent Shielded Category 6A Patch Cords	D4
NEXTSPEED® Category 6 Patch Cords	D5
NEXTSPEED® Shielded Category 6 Patch Cords	D5
NEXTSPEED® Category 5e Patch Cords	D5
Hubbell BIDnet Assemble-to-Order Cable Program	D6





Environmental

- Provides exact lengths and number of connections needed per application
- Eliminate unwanted cable and packaging on the job site



Strain Relief

Locking IDC stuffer cap provides superior strain relief



Performance

Qualified for 10 Gigabit Ethernet transmission IEEE 802.3an



Reliability

100% factory tested in a controlled environment

Standards



- ANSI/TIA-568-C.2 Category 6A component compliant
- ISO 11801 Class D, E and E_A compliant (Category 6A)
- Qualified for PoE+ IEEE 802.3bt
- UL Listed 1863

BIDnet Pre-Terminated Copper Trunk Assemblies are the ideal solution for data centers, open office and other applications where accuracy, reliability and performance are the most important factors. BIDnet assemblies provide simplicity for permanent links between switches, servers, patch panels, MUTOAs and zone distribution areas, enabling effortless moves, adds and changes to the infrastructure.

Jack to Open



Jack to Jack



Jack to Plug



All BIDnet Pre-Terminated Cable Assemblies are made-to-order items. Please call our Inside Sales team for lead-time and availability. See page H6 for fiber assemblies.

Specifications

Jacks	Plugs	Available Options
<ul style="list-style-type: none"> • Nose contact material: beryllium copper with precious metal plating over nickel under-plating • Contact performance: confirmed over the full range of TIA plug deflection limits 	<ul style="list-style-type: none"> • Mechanical: cable to plug tensile strength: 20+lb Mating cycles: 2000+ • Material: Plug body: polycarbonate UL 94-V0 Plug boot: PVC • Contact: high strength copper alloy Plating: 50 micro-inch precious metal over 100 micro-inch under-plating 	<ul style="list-style-type: none"> • Lengths: 10 to 295 feet • Legs: 1, 4, 6, 8 and 12 • Category: 5e, 6 and 6A • Connection: RJ45 jack; RJ45 plug; open end • Cable: Plenum, riser and LSZH • UTP: Category 5e, 6 and 6A • FTP: Category 6A (10GbE) • Color: Blue and white



HC6AB01



PC6AGY03

NEXTSPEED® Ascent Category 6A Patch Cords

Length	Black	Blue	Green	Orange	Pink
1'	HC6ABK01	HC6AB01	HC6AGN01	HC6AOR01	HC6APK01
3'	HC6ABK03	HC6AB03	HC6AGN03	HC6AOR03	HC6APK03
5'	HC6ABK05	HC6AB05	HC6AGN05	HC6AOR05	HC6APK05
7'	HC6ABK07	HC6AB07	HC6AGN07	HC6AOR07	HC6APK07
10'	HC6ABK10	HC6AB10	HC6AGN10	HC6AOR10	HC6APK10
15'	HC6ABK15	HC6AB15	HC6AGN15	HC6AOR15	HC6APK15
20'	HC6ABK20	HC6AB20	HC6AGN20	HC6AOR20	HC6APK20
25'	HC6ABK25	HC6AB25	HC6AGN25	HC6AOR25	HC6APK25

Length	Purple	Red	White	Yellow
1'	HC6AP01	HC6AR01	HC6AW01	HC6AY01
3'	HC6AP03	HC6AR03	HC6AW03	HC6AY03
5'	HC6AP05	HC6AR05	HC6AW05	HC6AY05
7'	HC6AP07	HC6AR07	HC6AW07	HC6AY07
10'	HC6AP10	HC6AR10	HC6AW10	HC6AY10
15'	HC6AP15	HC6AR15	HC6AW15	HC6AY15
20'	HC6AP20	HC6AR20	HC6AW20	HC6AY20
25'	HC6AP25	HC6AR25	HC6AW25	HC6AY25

Made-to-order lengths are available from 30ft to 100ft in 5ft increments.

NEXTSPEED® Ascent Low Diameter Category 6A Patch Cords

O.D. = 0.186"

Length	Black	Blue	Gray	White
1'	HCL6ABK01	HCL6AB01	HCL6AGY01	HCL6AW01
3'	HCL6ABK03	HCL6AB03	HCL6AGY03	HCL6AW03
5'	HCL6ABK05	HCL6AB05	HCL6AGY05	HCL6AW05
7'	HCL6ABK07	HCL6AB07	HCL6AGY07	HCL6AW07
10'	HCL6ABK10	HCL6AB10	HCL6AGY10	HCL6AW10
15'	HCL6ABK15	HCL6AB15	HCL6AGY15	HCL6AW15
20'	HCL6ABK20	HCL6AB20	HCL6AGY20	HCL6AW20
25'	HCL6ABK25	HCL6AB25	HCL6AGY25	HCL6AW25
30'	HCL6ABK30	HCL6AB30	HCL6AGY30	HCL6AW30

NEXTSPEED® Ascent Shielded Category 6A Patch Cords

Length	Black	Blue	Gray	Yellow
3'	PC6ABK03	PC6AB03	PC6AGY03	PC6AY03
5'	PC6ABK05	PC6AB05	PC6AGY05	PC6AY05
7'	PC6ABK07	PC6AB07	PC6AGY07	PC6AY07
10'	PC6ABK10	PC6AB10	PC6AGY10	PC6AY10
15'	PC6ABK15	PC6AB15	PC6AGY15	PC6AY15
20'	PC6ABK20	PC6AB20	PC6AGY20	PC6AY20
25'	PC6ABK25	PC6AB25	PC6AGY25	PC6AY25

Made-to-order lengths are available from 30ft to 75ft in 5ft increments.

Note: Specification sheets are available for these products online. Type the part number into the search box.



Specifications

Cable construction:

- Standard Conductor: 24AWG UTP
- Low Diameter Conductor: 28AWG UTP
- Jacket: flame-retardant PVC – CM rated

Standards

- TIA-568-C.2 Category 5e and 6 component compliant
- UL Listed 1863

NEXTSPEED® Category 6 Patch Cords

Length	Black	Blue	Gray	Green	Orange	Purple	Red	White	Yellow
1'	HC6BK01	HC6B01	HC6GY01	HC6GN01	HC6OR01	HC6P01	HC6R01	HC6W01	HC6Y01
3'	HC6BK03	HC6B03	HC6GY03	HC6GN03	HC6OR03	HC6P03	HC6R03	HC6W03	HC6Y03
5'	HC6BK05	HC6B05	HC6GY05	HC6GN05	HC6OR05	HC6P05	HC6R05	HC6W05	HC6Y05
7'	HC6BK07	HC6B07	HC6GY07	HC6GN07	HC6OR07	HC6P07	HC6R07	HC6W07	HC6Y07
10'	HC6BK10	HC6B10	HC6GY10	HC6GN10	HC6OR10	HC6P10	HC6R10	HC6W10	HC6Y10
15'	HC6BK15	HC6B15	HC6GY15	HC6GN15	HC6OR15	HC6P15	HC6R15	HC6W15	HC6Y15
20'	HC6BK20	HC6B20	HC6GY20	HC6GN20	HC6OR20	HC6P20	HC6R20	HC6W20	HC6Y20
25'	HC6BK25	HC6B25	HC6GY25	HC6GN25	HC6OR25	HC6P25	HC6R25	HC6W25	HC6Y25

Made-to-order lengths are available from 30ft to 100ft in 5ft increments.

NEXTSPEED® Category 6 Patch Cords with SecureIT™ Boot

Length	Black	Blue	Yellow
1'	HC6BK01SP	HC6B01SP	HC6Y01SP
3'	HC6BK03SP	HC6B03SP	HC6Y03SP
5'	HC6BK05SP	HC6B05SP	HC6Y05SP
7'	HC6BK07SP	HC6B07SP	HC6Y07SP
10'	HC6BK10SP	HC6B10SP	HC6Y10SP
15'	HC6BK15SP	HC6B15SP	HC6Y15SP
20'	HC6BK20SP	HC6B20SP	HC6Y20SP
25'	HC6BK25SP	HC6B25SP	HC6Y25SP

Made-to-order lengths are available from 30ft to 100ft in 5ft increments.

NEXTSPEED® Low Diameter Category 6 Patch Cords

O.D. = 0.155"

Length	Black	Blue	Gray	White
1'	HCL6BK01	HCL6B01	HCL6GY01	HCL6W01
3'	HCL6BK03	HCL6B03	HCL6GY03	HCL6W03
5'	HCL6BK05	HCL6B05	HCL6GY05	HCL6W05
7'	HCL6BK07	HCL6B07	HCL6GY07	HCL6W07
10'	HCL6BK10	HCL6B10	HCL6GY10	HCL6W10
15'	HCL6BK15	HCL6B15	HCL6GY15	HCL6W15
20'	HCL6BK20	HCL6B20	HCL6GY20	HCL6W20
25'	HCL6BK25	HCL6B25	HCL6GY25	HCL6W25
30'	HCL6BK30	HCL6B30	HCL6GY30	HCL6W30

NEXTSPEED® Shielded Category 6 Patch Cords

Length	Black	Blue	Gray	Green	Orange	Purple	Red	White	Yellow
3'	PS6BK03	PS6B03	PS6GY03	PS6GN03	PS6OR03	PS6P03	PS6R03	PS6W03	PS6Y03
5'	PS6BK05	PS6B05	PS6GY05	PS6GN05	PS6OR05	PS6P05	PS6R05	PS6W05	PS6Y05
7'	PS6BK07	PS6B07	PS6GY07	PS6GN07	PS6OR07	PS6P07	PS6R07	PS6W07	PS6Y07
10'	PS6BK10	PS6B10	PS6GY10	PS6GN10	PS6OR10	PS6P10	PS6R10	PS6W10	PS6Y10
15'	PS6BK15	PS6B15	PS6GY15	PS6GN15	PS6OR15	PS6P15	PS6R15	PS6W15	PS6Y15
20'	PS6BK20	PS6B20	PS6GY20	PS6GN20	PS6OR20	PS6P20	PS6R20	PS6W20	PS6Y20
25'	PS6BK25	PS6B25	PS6GY25	PS6GN25	PS6OR25	PS6P25	PS6R25	PS6W25	PS6Y25

Made-to-order lengths are available from 30ft to 100ft in 5ft increments.

NEXTSPEED® Category 5e Patch Cords

Length	Black	Blue	Gray	Green	Orange	Purple	Red	White	Yellow
1'	HC5EBK01	HC5EB01	HC5EGY01	HC5EGN01	HC5EOR01	HC5EP01	HC5ER01	HC5EW01	HC5EY01
3'	HC5EBK03	HC5EB03	HC5EGY03	HC5EGN03	HC5EOR03	HC5EP03	HC5ER03	HC5EW03	HC5EY03
5'	HC5EBK05	HC5EB05	HC5EGY05	HC5EGN05	HC5EOR05	HC5EP05	HC5ER05	HC5EW05	HC5EY05
7'	HC5EBK07	HC5EB07	HC5EGY07	HC5EGN07	HC5EOR07	HC5EP07	HC5ER07	HC5EW07	HC5EY07
10'	HC5EBK10	HC5EB10	HC5EGY10	HC5EGN10	HC5EOR10	HC5EP10	HC5ER10	HC5EW10	HC5EY10
15'	HC5EBK15	HC5EB15	HC5EGY15	HC5EGN15	HC5EOR15	HC5EP15	HC5ER15	HC5EW15	HC5EY15
20'	HC5EBK20	HC5EB20	HC5EGY20	HC5EGN20	HC5EOR20	HC5EP20	HC5ER20	HC5EW20	HC5EY20
25'	HC5EBK25	HC5EB25	HC5EGY25	HC5EGN25	HC5EOR25	HC5EP25	HC5ER25	HC5EW25	HC5EY25

Made-to-order lengths are available from 30ft to 100ft in 5ft increments.

Note: Specification sheets are available for these products online. Type the part number into the search box.



The Hubbell Assemble-to-Order cable assembly program delivers custom copper and fiber assemblies within a short period of time. Knowing that every job and every application is different, we offer custom lengths, configurations and colors to fit any application.

Whether the application is Category 5e or 6A, 25-pair, or multi-configured fiber trunk cables, Hubbell can satisfy custom cable assembly needs. Please call our Inside Sales team for lead-time and availability. Minimum order quantities apply.

Copper Patch Cords

- Pre-terminated copper trunk assemblies
- Category 5e, 6 and 6A
- Solid or stranded cable
- Single or double-ended
- Custom lengths
- Custom configurations
- Booted/non-booted
- Snagless or regular plug style
- 11 different colors

110 and 25-Pair

- Custom lengths
- Custom wiring
- Over molded
- Single- or double-ended

Audio/Video

- X-END customs
- HD-15 SVGA style
- S-video
- BNC
- RCA
- 3.5mm

Fiber Cords

- Trunk cables, multi-fiber cable
- Simplex
- Duplex
- Pigtailed
- Singlemode
- Multimode
- MTP/MTO assemblies
- LC
- SC
- ST-style
- FC
- MT-RJ
- Angle polish
- Custom lengths