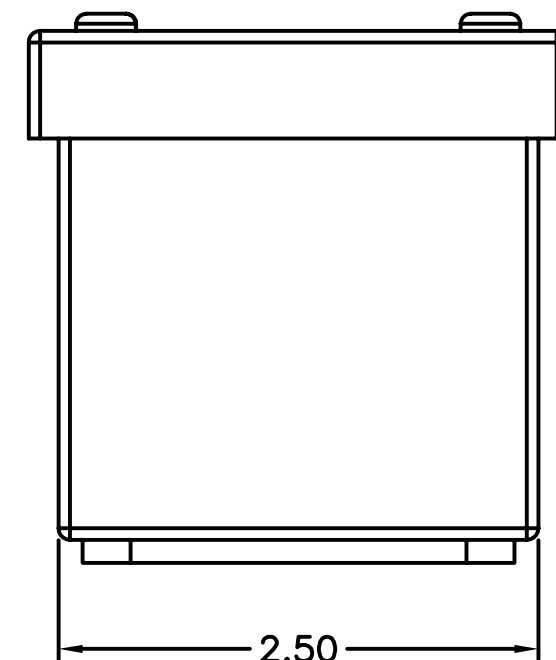
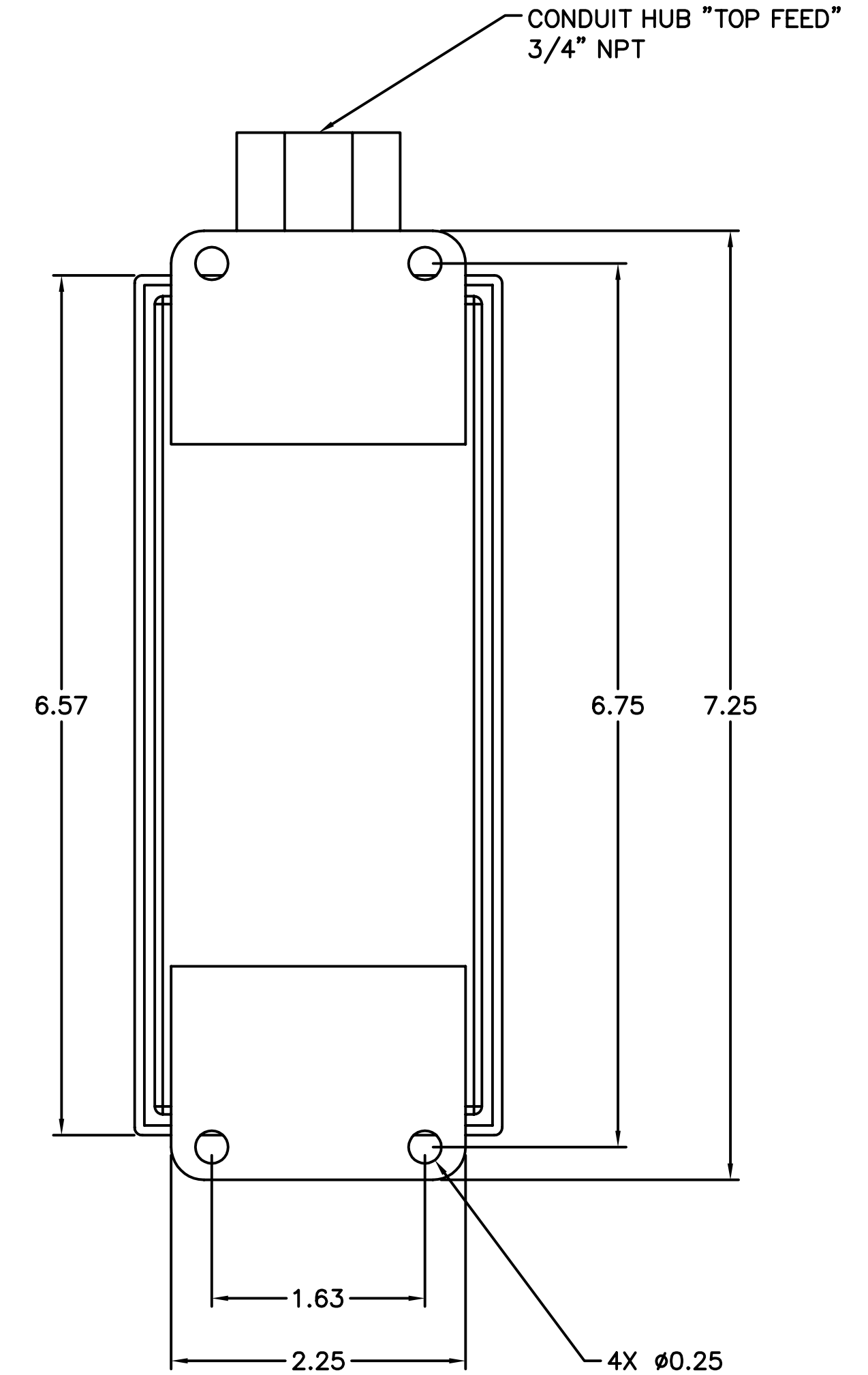
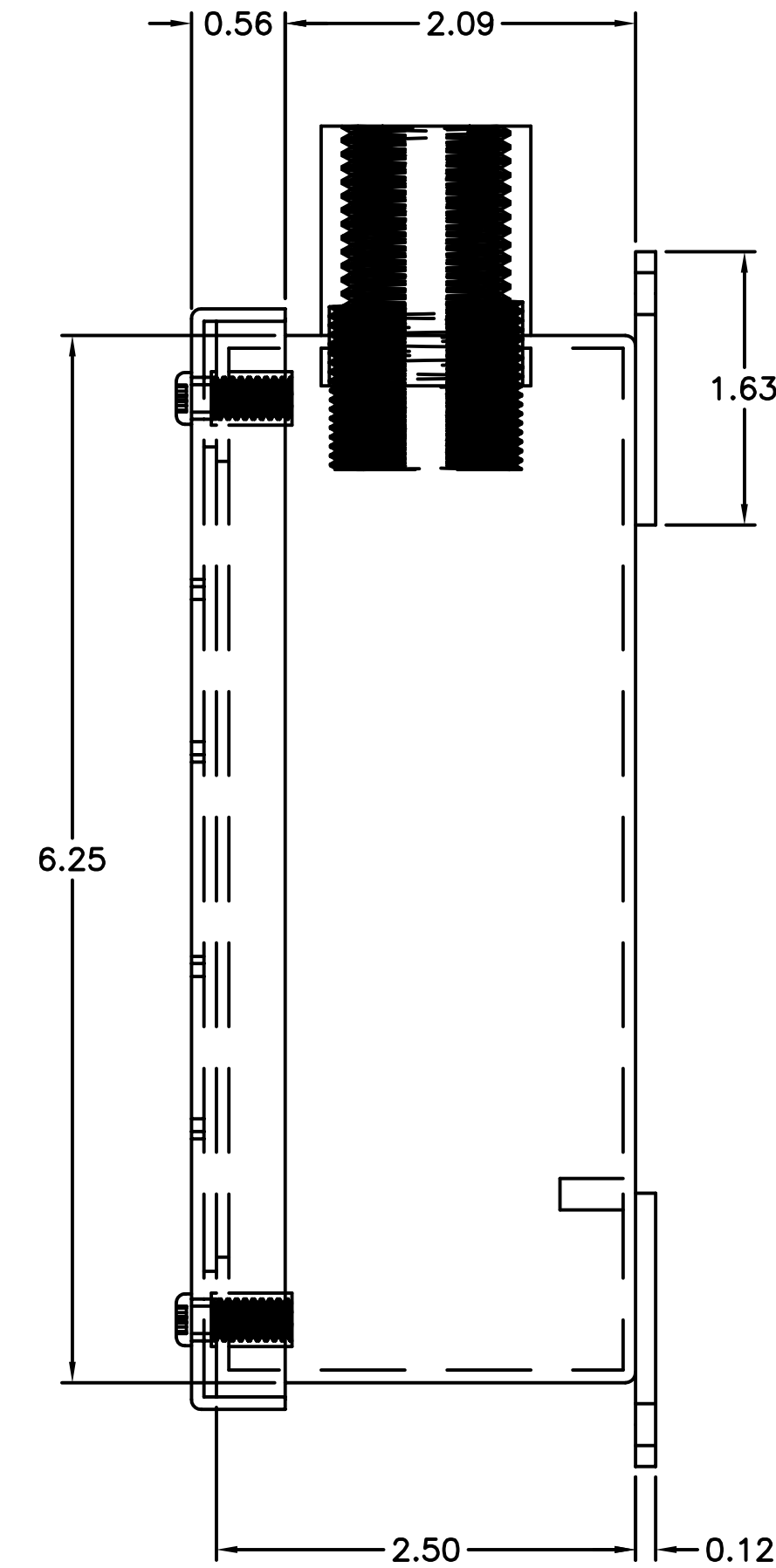
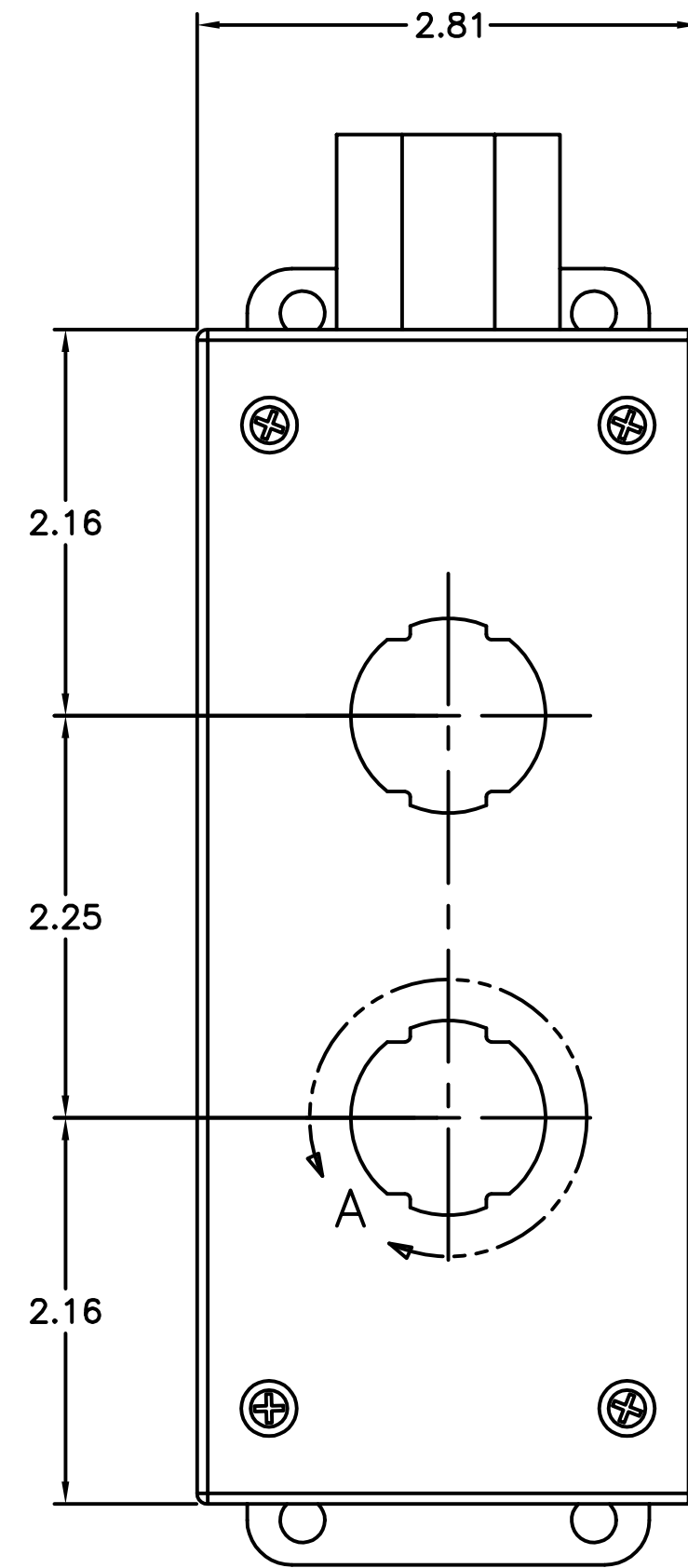
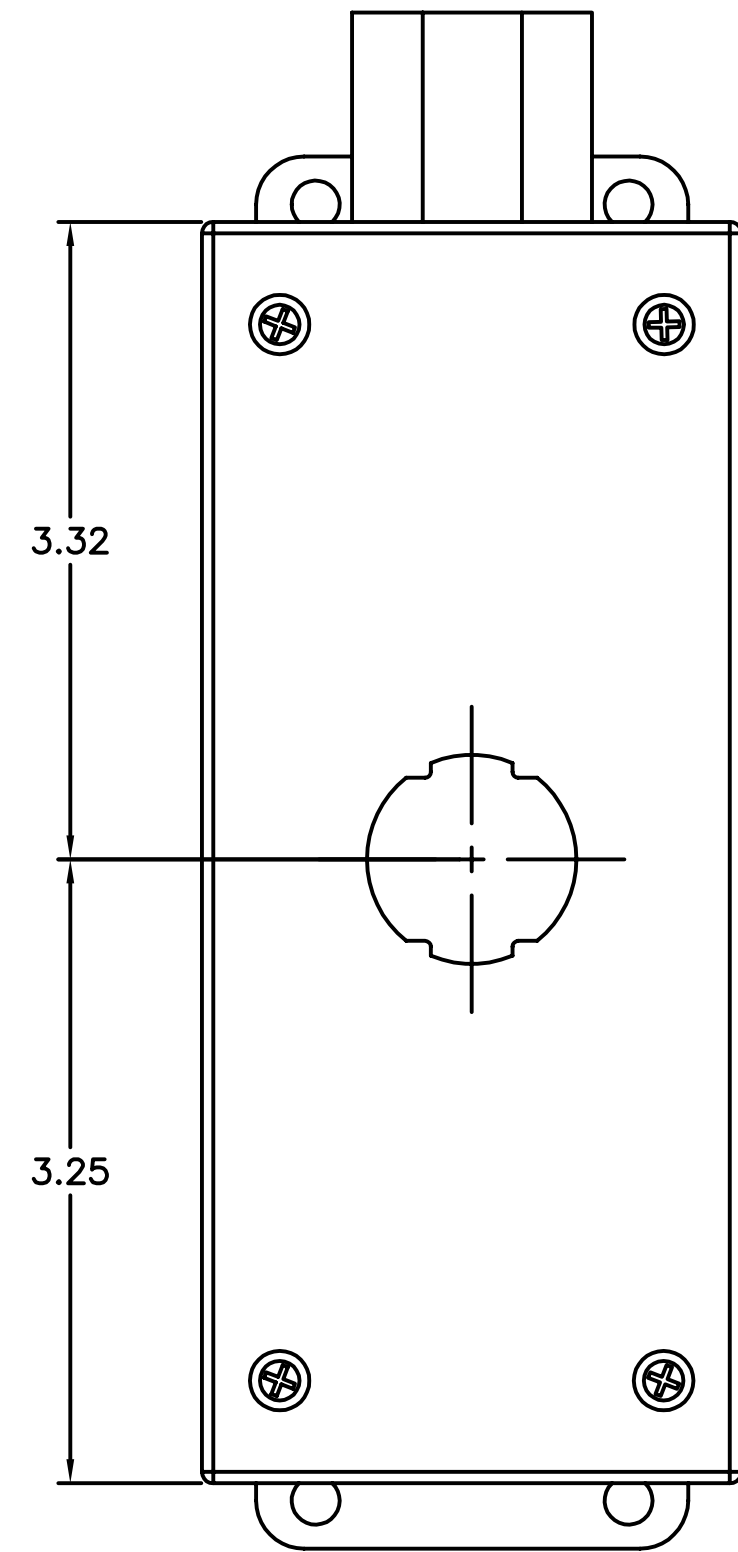
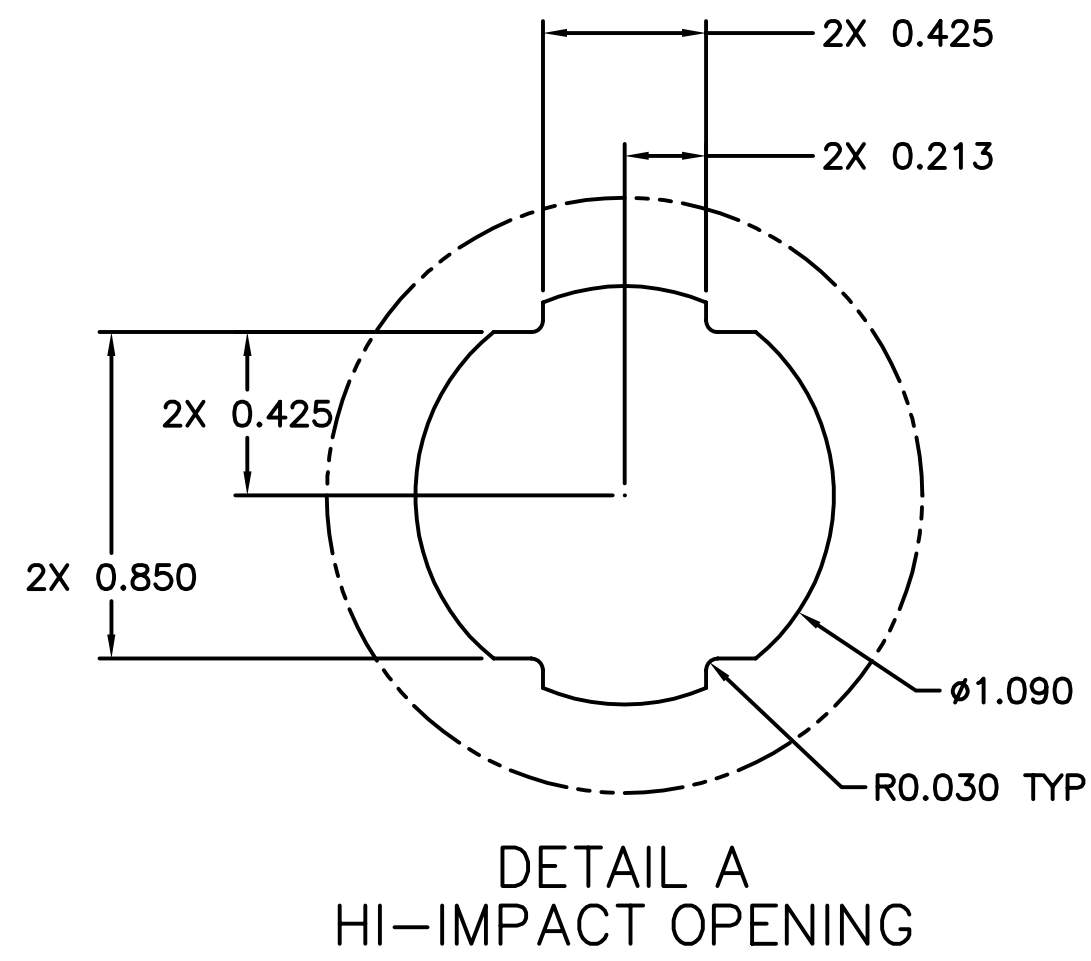
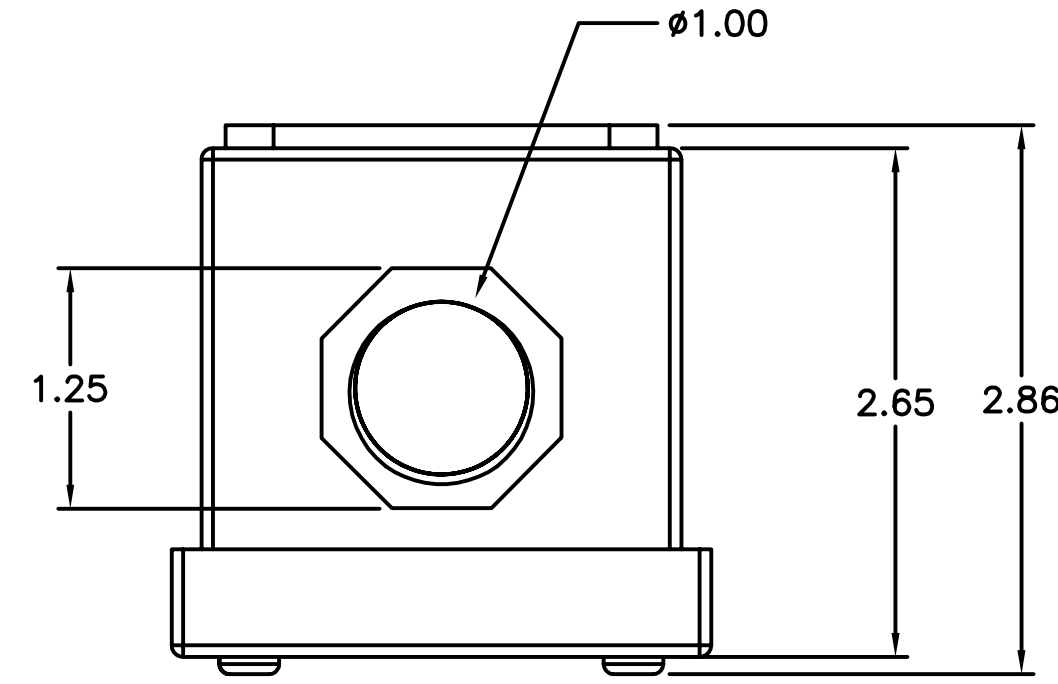



CATALOG NUMBER	DESCRIPTION	SURFACE FINISH	MATERIAL
HI1CBSS	STAINLESS STEEL 1-PORT BOX NEMA 4X	N/A	14 GAGE, STAINLESS STEEL
HI2CBSS	STAINLESS STEEL 2 PORT BOX NEMA 4X	N/A	14 GAGE, STAINLESS STEEL
HI1CB2G	GRAY 1-PORT BOX NEMA 12	ANSI-61 GRAY POWDER COAT	14 GAGE, C.R.S.
HI2CB2G	GRAY 2-PORT BOX NEMA 12	ANSI-61 GRAY POWDER COAT	14 GAGE, C.R.S.

NOTES:

1. SPECIFICATIONS SUBJECT TO CHANGE WITHOUT NOTICE



REV.	ECN	DATE	DESCRIPTION	CHG BY	APPD BY
A	5384	8/3/04	INITIAL RELEASE	GPE	MMA

Created on AUTOCAD	DIMENSIONING AND TOLERANCE PER ANSI Y14.5M-1982 UNLESS OTHERWISE SPECIFIED, DIMENSIONS ARE IN INCHES (MM). TOLERANCES .XX = ±.01 (.25) .XXX = ±.005 (.127) .XXXX = ±.0025 (.0635) ANGLE TOL ±1°	PROJECT REFERENCE: PMS 2003-119	 Hubbell Premise Wiring HUBBELL INCORPORATED (Delaware) 14 Lord's Hill Road, Stonington, Connecticut 06378
	IN ACCEPTING OUR DRAWINGS, BLUEPRINTS, OR SUPPORTING DOCUMENTATION FOR QUOTATION OR OTHER PURPOSES, YOU AGREE NOT TO DISCLOSE TO OTHERS THE IDEAS, INFORMATION, OR DESIGNS SHOWN HEREIN, AND THAT YOU WILL MAKE NO USE OF SAME WITHOUT PERMISSION	MATERIAL: SEE TABULATION	
		DRAWN BY: GLEN P. EIGO, 8/3/04	SIZE DRAWING NO. D C11999
		CHECKED BY: MARJANA ABBY, 8/6/04	REV. A
		APPROVED BY: GLENN KIERSTEAD, 8/6/04	SCALE: NTS SHEET 1 OF 1