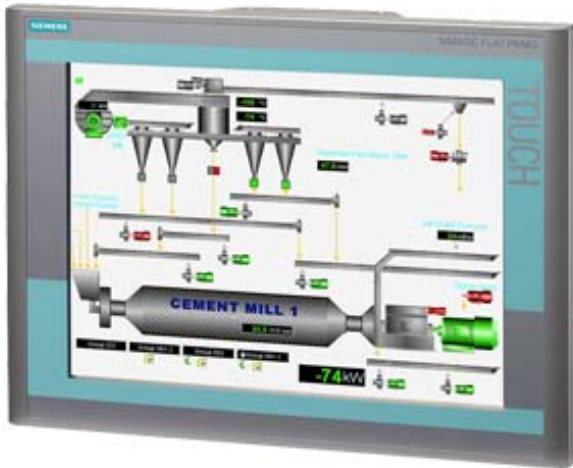


SIMATIC Flat Panel pro 15-inch Touch TFT screen with 1024x 768 pixels resolution for 24 V DC and 120/240 V AC VGA, DVI-D interface, can be placed up to 30 m away Fully enclosed IP65/NEMA4



General information	
Product type designation	PRO
Display	
Design of display	TFT
Screen diagonal	15 in
Display width	304.1 mm
Display height	228.1 mm
Viewing angle	160° x 160°
On Screen Display (OSD) configuration	Yes
Number of colors	16 000 000; 16.7 million
Resolution (pixels)	
• Horizontal image resolution	1 024 Pixel
• Vertical image resolution	768 Pixel
General features	
• Brightness/contrast	> 260 cd/m ² / 350:1
Control elements	
Control elements	Touch
Input device	

• Integrated mouse cursor control	No
Keyboard fonts	
• Function keys	No
— Number of function keys	0
Touch operation	
• Design as touch screen	Yes
Installation type/mounting	
Rack mounting	No
VESA mounting	Yes
Supply voltage	
Type of supply voltage	AC/DC
permissible range, lower limit (DC)	19.2 V
permissible range, upper limit (DC)	28.8 V
permissible range, lower limit (AC)	90 V
permissible range, upper limit (AC)	264 V
Degree and class of protection	
IP (at the front)	IP65
IP54 at front	Yes
IP65 at front	Yes
IP20 rear	Yes
IP65 rear	Yes
Standards, approvals, certificates	
UL approval	Yes
EAC (formerly Gost-R)	No
SIBE safety certification	No
Marine approval	
• Germanischer Lloyd (GL)	No
• American Bureau of Shipping (ABS)	No
• Bureau Veritas (BV)	No
• Det Norske Veritas (DNV)	No
• Lloyds Register of Shipping (LRS)	No
• Polski Rejestr Statkow (PRS)	No
Ambient conditions	
Ambient temperature during operation	
• min.	0 °C
• max.	45 °C
Dimensions	
Width of the housing front	400 mm
Height of housing front	310 mm
Overall depth	98.5 mm

last modified:

06/05/2019