

RITTAL PLATINUM DISTRIBUTOR

STANDARD ELECTRIC SUPPLY CO.



Standard Electric is the preferred choice in Rittal enclosures! Our familiarity with cutting-edge technologies allow us to supply solutions that drive your business forward. Just as Standard Electric provides Rittal enclosures customized to your specifications, we offer controls solutions for all your automation concerns.

We look forward to partnering for your success!

WHAT THIS MEANS FOR YOU...

- Over \$1 million of Rittal Inventory in stock
- Competitive Pricing
- Over 75% of all Rittal SKUs in stock
- 2 Modification Facilities
- On-Site Milling/CNC Machine
- Team of Dedicated Trained Specialists



WISCONSIN

ANDY SCHONERT

BUSINESS DEVELOPMENT SPECIALIST

414-231-2563

aschonert@standardelectricsupply.com

ILLINOIS/INDIANA

TODD HARTKE

BUSINESS DEVELOPMENT SPECIALIST

630-741-4575

thartke@standardelectricsupply.com

SUPPORT

RICH KRUEGER

MOD SHOP MANAGER

920-783-1494

rkrueger@standardelectricsupply.com



BRINGING YOU THE LATEST FROM RITTAL

MAKE A CHANGE FOR THE BETTER, BY CHOOSING THE BEST

TS 8 MODULAR ENCLOSURES

- Made from Stainless Steel 316
- 4 Point Internal latching system
- Discrete and easily removable hinge system
- 87" max height, 32" max width , 32" max depth
- Mounting Panel included

BLUE E+ COOLING UNIT SERIES

- Cooling Capacity of 100 - 20,000 BTU
- 2.5 Energy Efficiency Rating average
- 3 types of wall-mounting options, 1 cut-out wall-mount option
- S/B UL Listed, GS, CSA and CE approvals

HYGIENIC DESIGN WALLMOUNT

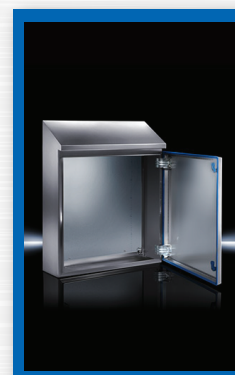
- 30° forward sloping roof for rapid drainage
- Overhanging roof protects door seal
- Blue silicon gasket contrasts with food deposits
- Gapless seal surrounds circumference
- Internal hinges improves exterior cleaning
- Lock to prevent unauthorized access

LED SYSTEM LIGHTING

- 1200/900 LM Max Luminosity
- 4000K Light Color
- Adjustable light distribution and Motion Sensor option
- Toolless clip, screw or magnet mounting options
- Daisy chain wiring, up to 15 lights
- 2 minute assembly time

SUPPORT ARM SYSTEMS

- High load-bearing capacity of up to 480lbs
- Adjustments can be made without disassembly
- Enclosure Suspended or top-mounted
- Removable lid for simple cable entry



ISO 9001:2015